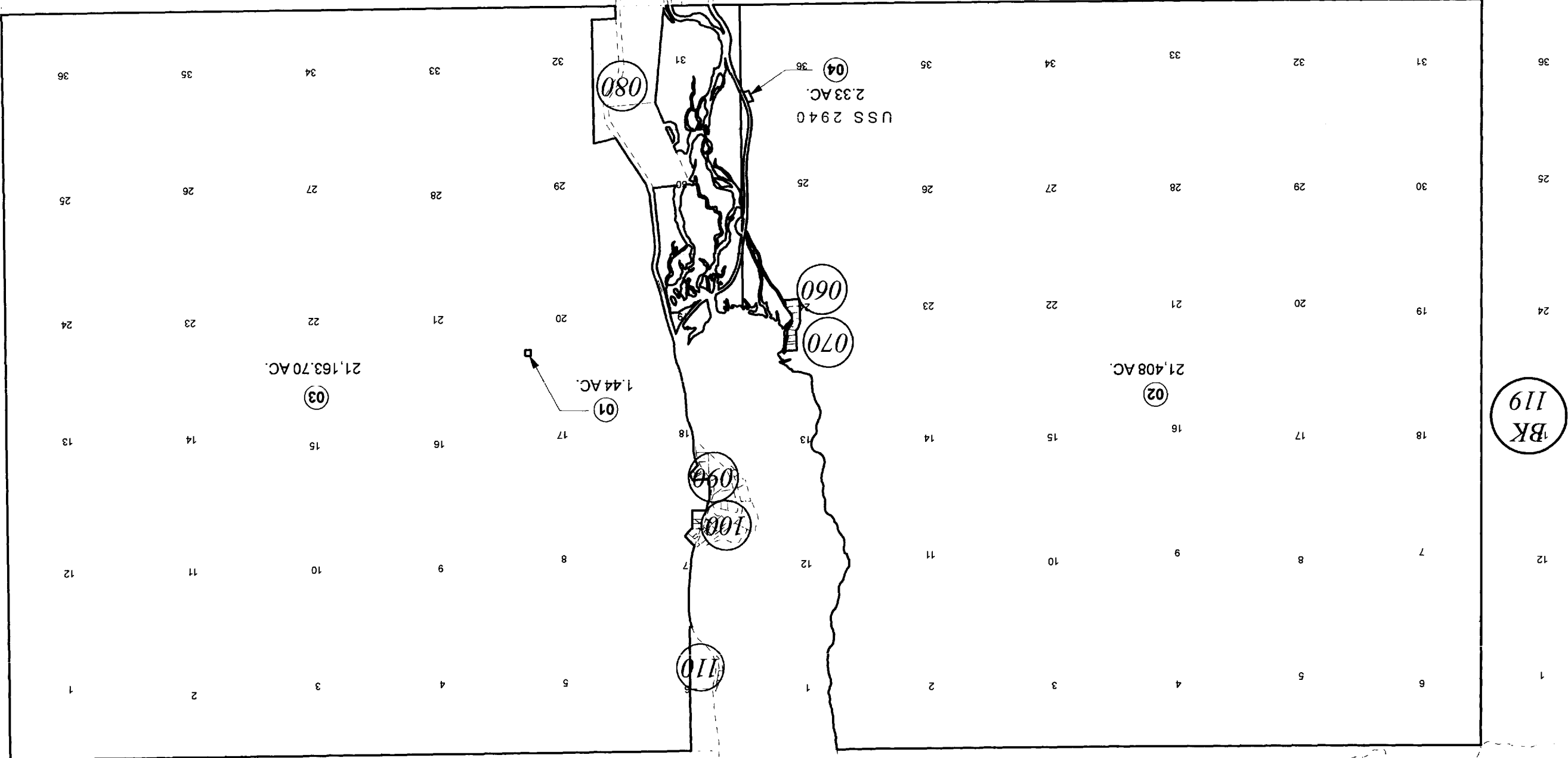


| For 2010 assessment roll |     |        |
|--------------------------|-----|--------|
| Delete                   | Add | Revise |
| To                       |     | 04     |

SEPTEMBER 3, 2010

Assessor's Map  
Kenai Peninsula Borough  
U.S.S. 2940 SWU02940

This map is prepared for Kenai Peninsula Borough Assessing Dept. use only and is not intended for conveyance nor is it a survey. Note- Assessor's block Numbers Shown in Ellipses Assessor's Parcel Numbers Shown in Circles



420

BK 119

125-330

TO3N R01W & T03N R01E S.M.