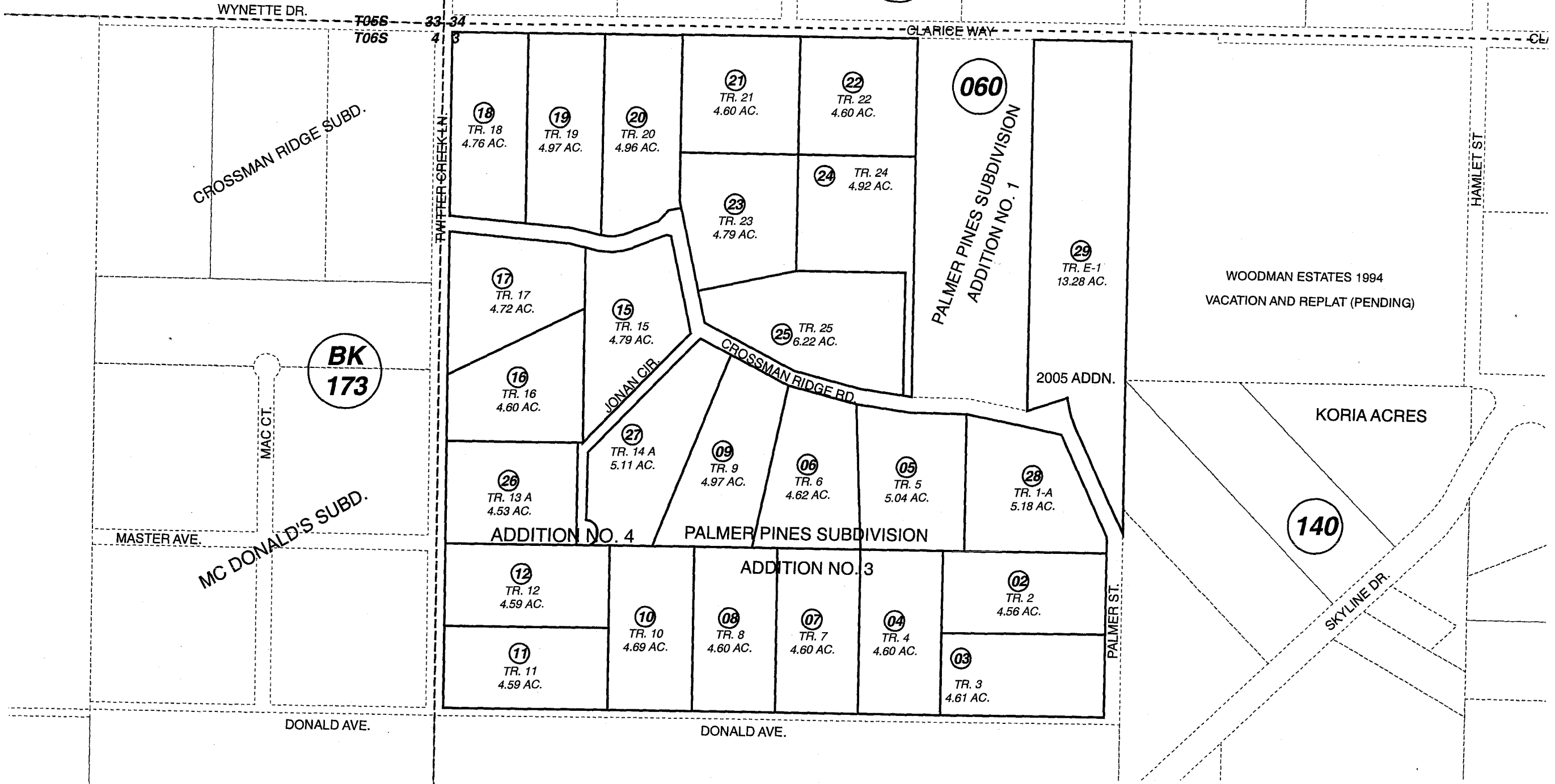


POR. NW1/4 SEC. 3, T06S, R13W, S.M. BK 171

174-062



SEPTEMBER 2, 2005

For 2006 assessment roll		
Delete	Add	Revise
To		
1	28,29	



071

PALMER PINES SUBD ADDN NO 3 HM2001021
 PALMER PINES SUBD ADDN NO 4 HM2004057
 PALMER PINES SUB 2005 ADDN HM2005042

Assessor's Map
 Kenai Peninsula Borough

This map is prepared for Kenai Peninsula Borough Assessing Dept. use only and is not intended for conveyance nor is it a survey.

Note- Assessor's block Numbers Shown in Ellipses
 Assessor's Parcel Numbers Shown in Circles