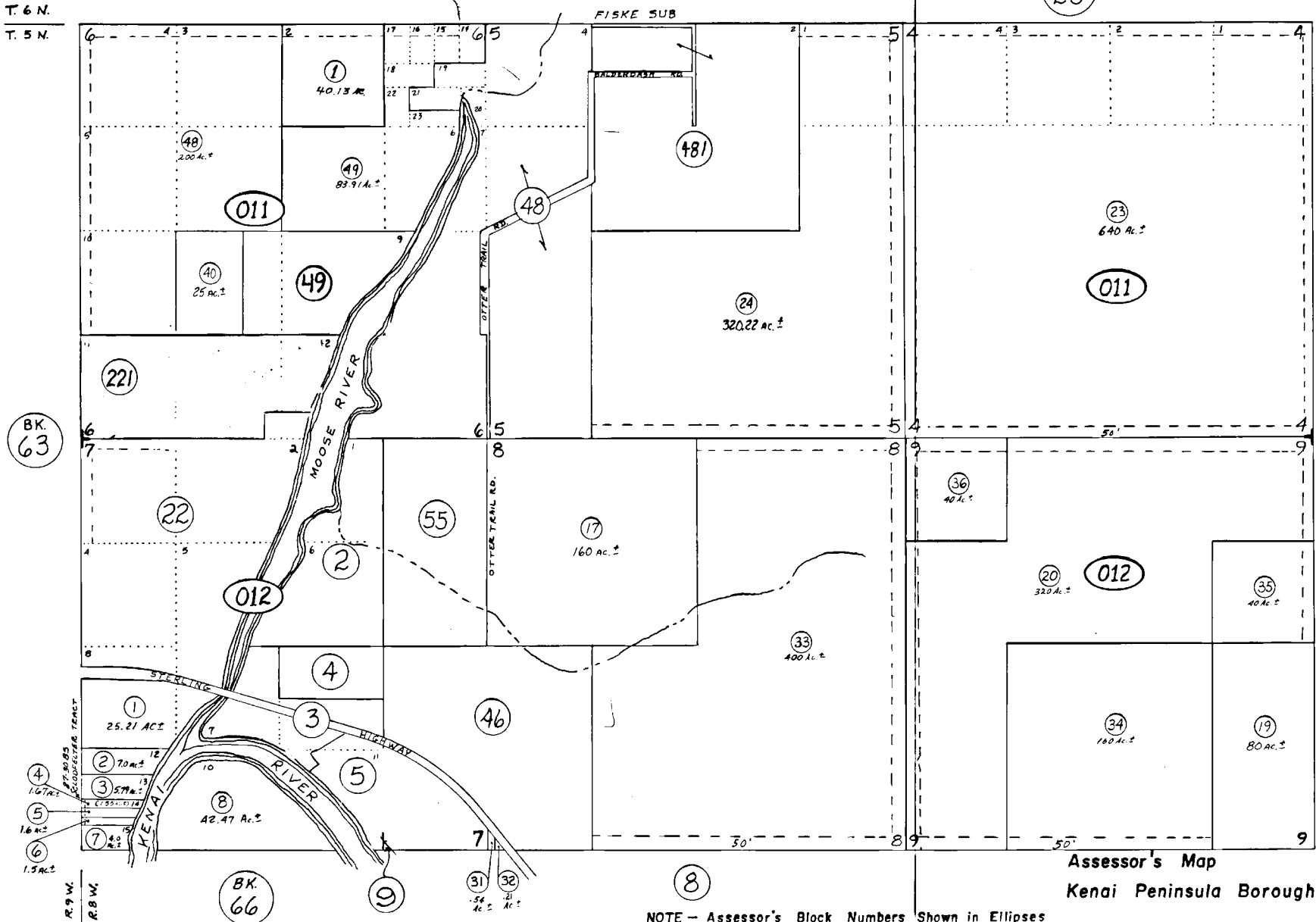


SEC. 4, 5, 6, 7, 8, 9, T. 5 N., R. 8 W., S.M.

T. 6 N.  
T. 5 N.

BK. 25



BK. 63

7

BK. 66

8

Assessor's Map  
Kenai Peninsula Borough, Alaska

NOTE - Assessor's Block Numbers Shown in Ellipses  
Assessor's Parcel Numbers Shown in Circles