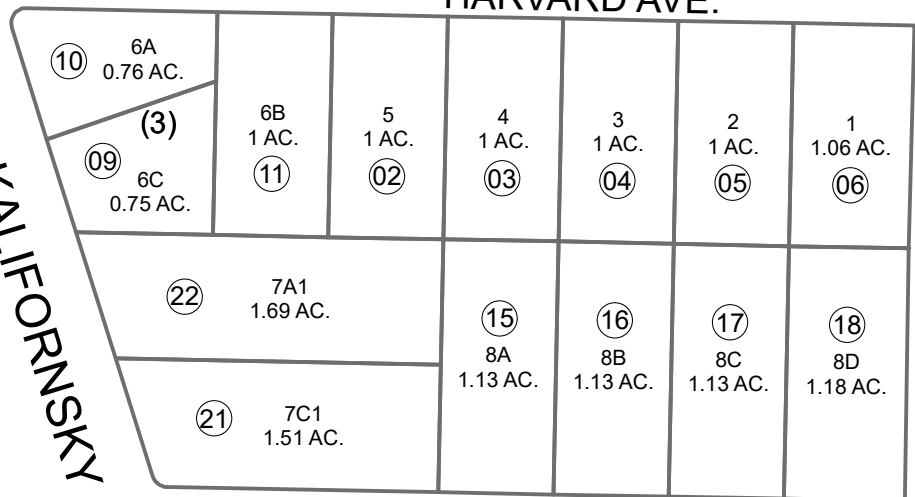
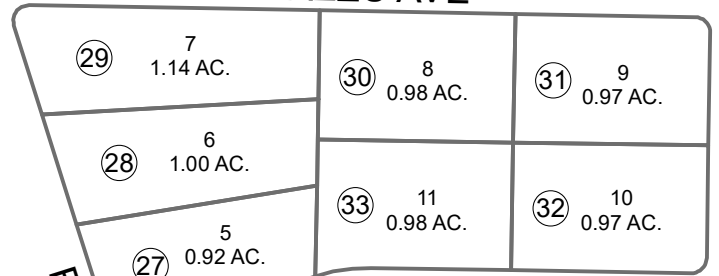


160

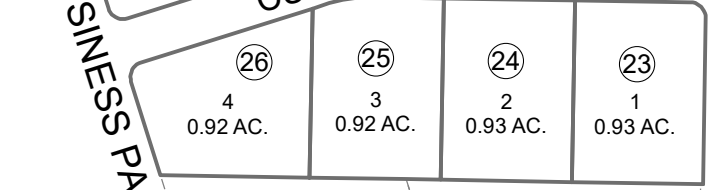
HARVARD AVE.



WAZZU AVE



CUPE WAY



KALIFORNIA BEACH RD  
BUSINESS PARK FRONTAL

YALE ST.

BK  
060

36

430

081

800

COMMERCE ST.

SINGLETON CT.

CHIMERA CT.

ARIES CT.

PISCES CT.

VIRGO CT.

COMMERCE ST.

MERRYWOOD AVE.

SEPTEMBER 21, 2021

For 2022 assessment roll		
Delete	Add	Revise
To		
19,20	23-33	



0 50 100 200 Feet

Assessor's Map  
Kenai Peninsula Borough

STEWARDSHIP SUB KN0720002  
COLLEGE VILLAGE SUB KN0730033  
COLLEGE VILLAGE SUB RESUB LOT 6 KN0790003  
COLLEGE VILLAGE SUB RESUB OF LOTS 7&8 KN0790082  
COLLEGE VILLAGE SUB NO 5 KN0860083  
STEWARDSHIP SUB 2021 REPLAT KN2021048

This map is prepared for Kenai Peninsula Borough Assessing Dept. use only and is not intended for conveyance nor is it a survey.

Note- Assessor's block Numbers Shown in Elipses  
Assessor's Parcel Numbers Shown in Circles