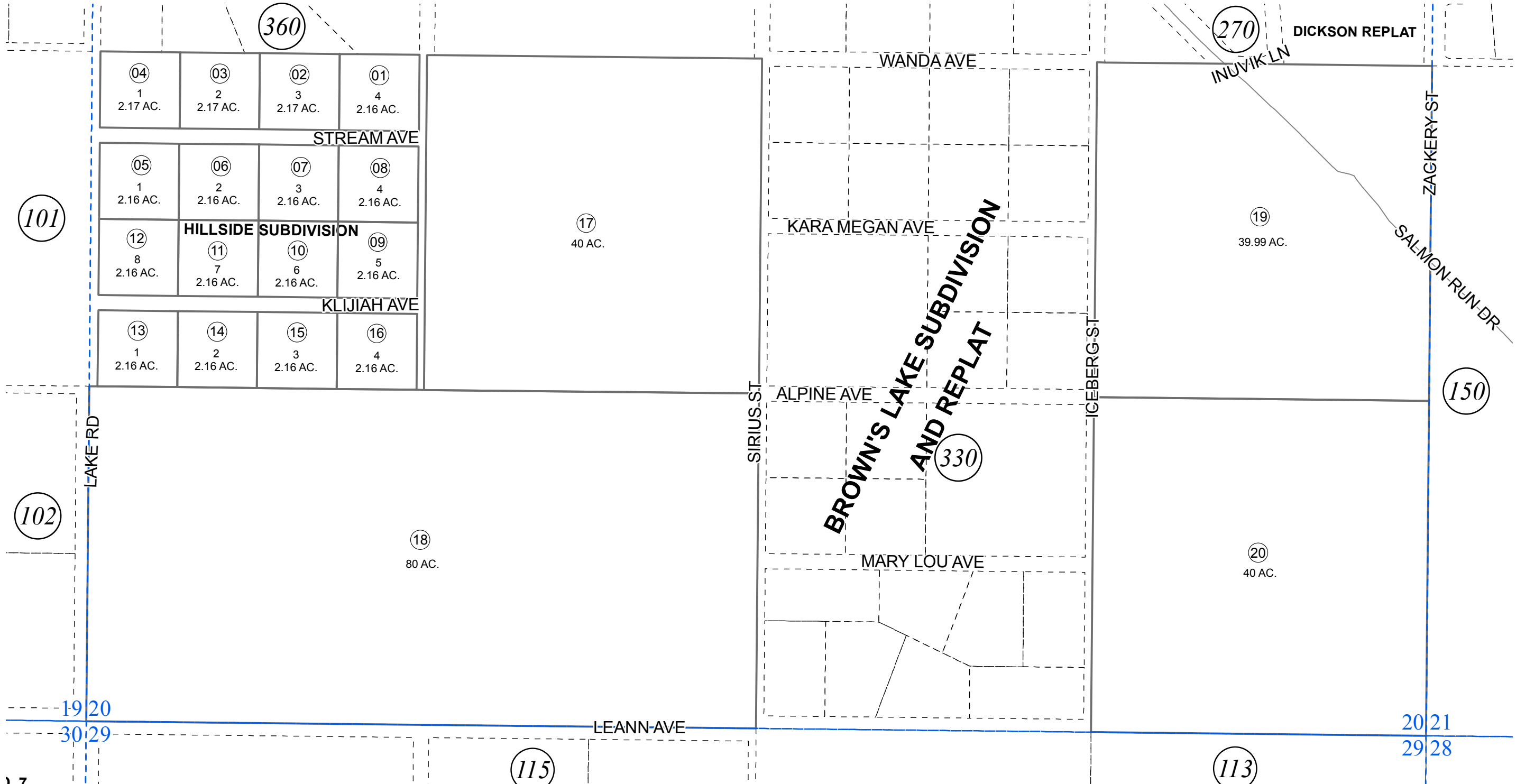


SW 1/4 AND E 1/2 SE 1/4, SEC. 20, T05N, R08W, S.M.

066-331



102

101

360

270

150

330

115

113

04 1 2.17 AC.	03 2 2.17 AC.	02 3 2.17 AC.	01 4 2.16 AC.
STREAM AVE			
05 1 2.16 AC.	06 2 2.16 AC.	07 3 2.16 AC.	08 4 2.16 AC.
<b>HILLSIDE SUBDIVISION</b>			
12 8 2.16 AC.	11 7 2.16 AC.	10 6 2.16 AC.	09 5 2.16 AC.
KLIJAH AVE			
13 1 2.16 AC.	14 2 2.16 AC.	15 3 2.16 AC.	16 4 2.16 AC.

17  
40 AC.

19  
39.99 AC.

18  
80 AC.

20  
40 AC.

19 20  
30 29

20 21  
29 28



0 100 200 400 Feet

NOVEMBER 20, 2015

For 2016 assessment roll		
Delete	Add	Revise
To		19
(REVISE ACREAGE)		

Assessor's Map  
Kenai Peninsula Borough

HILLSIDE SUB KN0850162  
RECORD OF SURVEY KN2015054RS

This map is prepared for Kenai Peninsula Borough Assessing Dept. use only and is not intended for conveyance nor is it a survey.  
Note- Assessor's block Numbers Shown in Elipses  
Assessor's Parcel Numbers Shown in Circles