

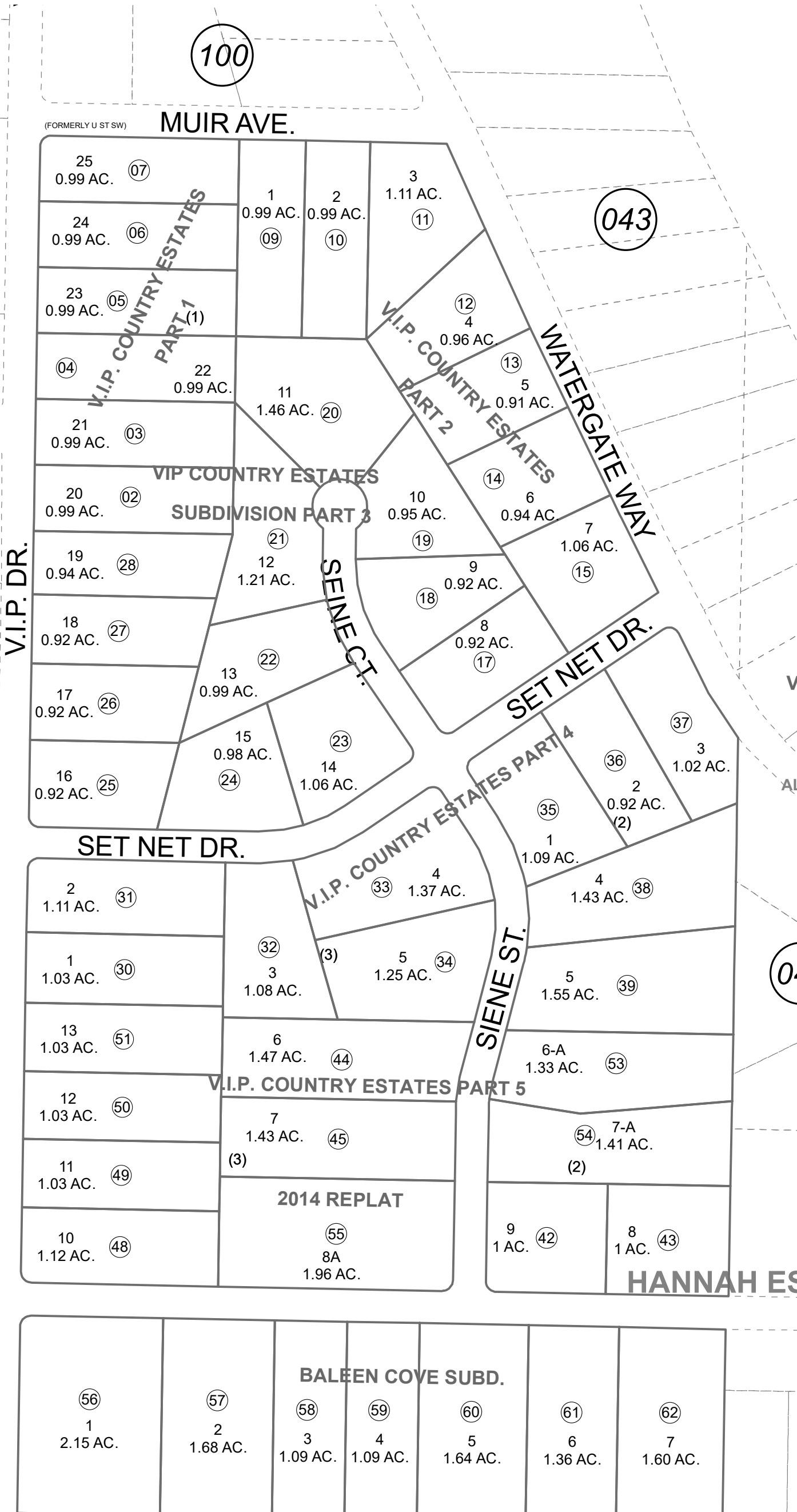
049-410

E1/2 SW1/4 SEC. 17, T05N, R11W, S.M.

EK AT

RANCH ESTATES PART 2

PART 1



040

100

043

043

BK 055

SEC. 17  
SEC. 20

KALIFOR

0 100 200 Feet



- V I P C O U N T R Y E S T A T E S S U B P A R T 1 KN0770055
- V I P C O U N T R Y E S T A T E S S U B P A R T 2 KN0770126
- V I P C O U N T R Y E S T A T E S P T 3 KN0790001
- V I P C O U N T R Y E S T A T E S S U B P A R T 3 KN0790001
- V I P C O U N T R Y E S T A T E S P T 4 KN0840087
- V I P C O U N T R Y E S T A T E S S U B P A R T 4 KN0840087
- V I P C O U N T R Y E S T A T E S P T 5 KN0850124
- V I P C O U N T R Y E S T A T E S S U B P A R T 5 KN0850124
- V I P C O U N T R Y E S T P A R T 5 - W H I S P E R KN2000031
- V I P C O U N T R Y E S T P A R T 5 2014 R E P L A T KN2014086
- B A L E E N C O V E S U B KN2021085

Assessor's Map  
Kenai Peninsula Borough

This map is prepared  
for Kenai Peninsula  
Borough Assessing Dept.  
use only and is not  
intended for conveyance  
nor is it a survey.

Note- Assessor's block Numbers Shown in Ellipses  
Assessor's Parcel Numbers Shown in Circles

DECEMBER 6, 2021

For 2022 assessment roll	
Delete	Revise
To	56-62
52	