

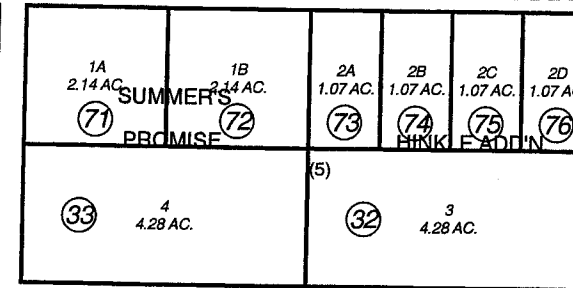
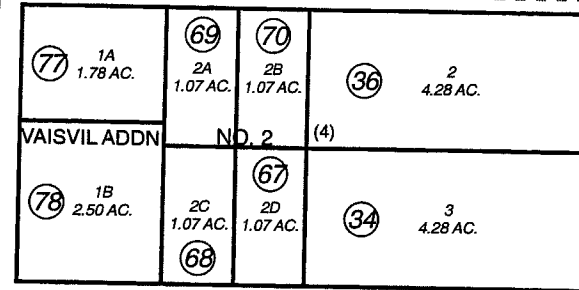
SW1/4 SEC. 25, T05N, R09W, S.M.

066-441

040

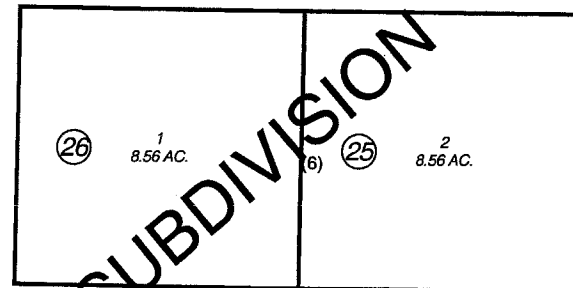
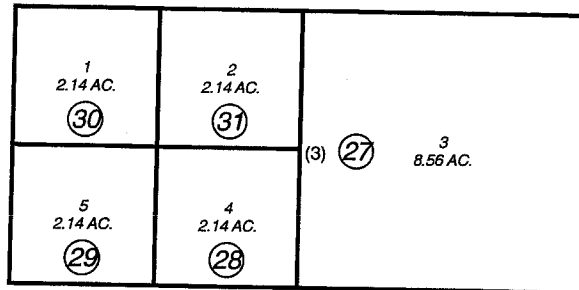
KANAK AVE.

ROBERT AVE.



(A)

LOURDES AVE.



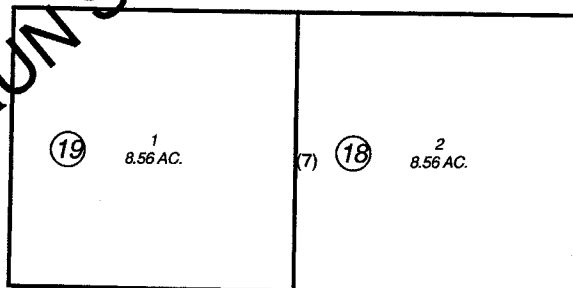
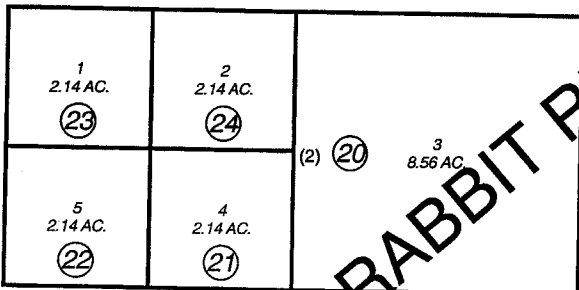
(C)

444

ROBIN AVE.

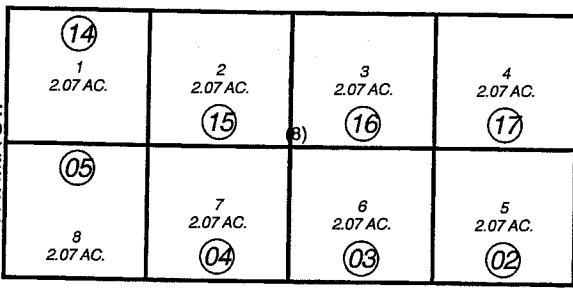
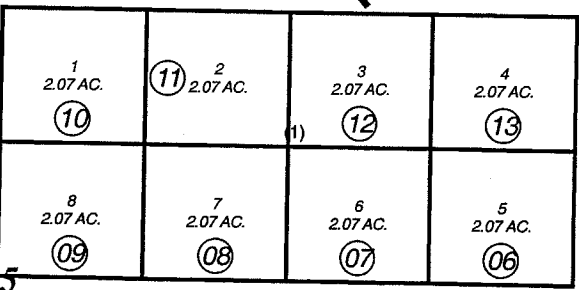
LUPINE SUBDIVISION

NO. 2



(E)

NEEDLES AVE.



(G)

BROWN'S LAKE RD. (PER KN86-13)

040

NAPIK SUBDIVISION

040

JAY AVE.

RABBIT RUN RD.

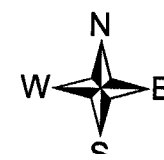
FATIMA ST.

SOLITUDE ST.

SECLUSION ST.

AUGUST 19, 2005

For 2006 assessment roll		
Delete	Add	Revise
To		
65	77,78	



Assessor's Map
Kenai Peninsula Borough

RABBIT RUN SUB KN0790198
 RABBIT RUN SUB ADDN NO 1 KN0830090
 RABBIT RUN SUB ADDN NO 2 KN0850231
 RABBIT RUN SUB SUMMERS PROMISE KN0870006
 RABBIT RUN SUB HINKLE ADDN KN0870022
 RABBIT RUN SUB VAISVIL ADDN KN2005033

This map is prepared for Kenai Peninsula Borough Assessing Dept. use only and is not intended for conveyance nor is it a survey.
 Note- Assessor's block Numbers Shown in Ellipses
 Assessor's Parcel Numbers Shown in Circles