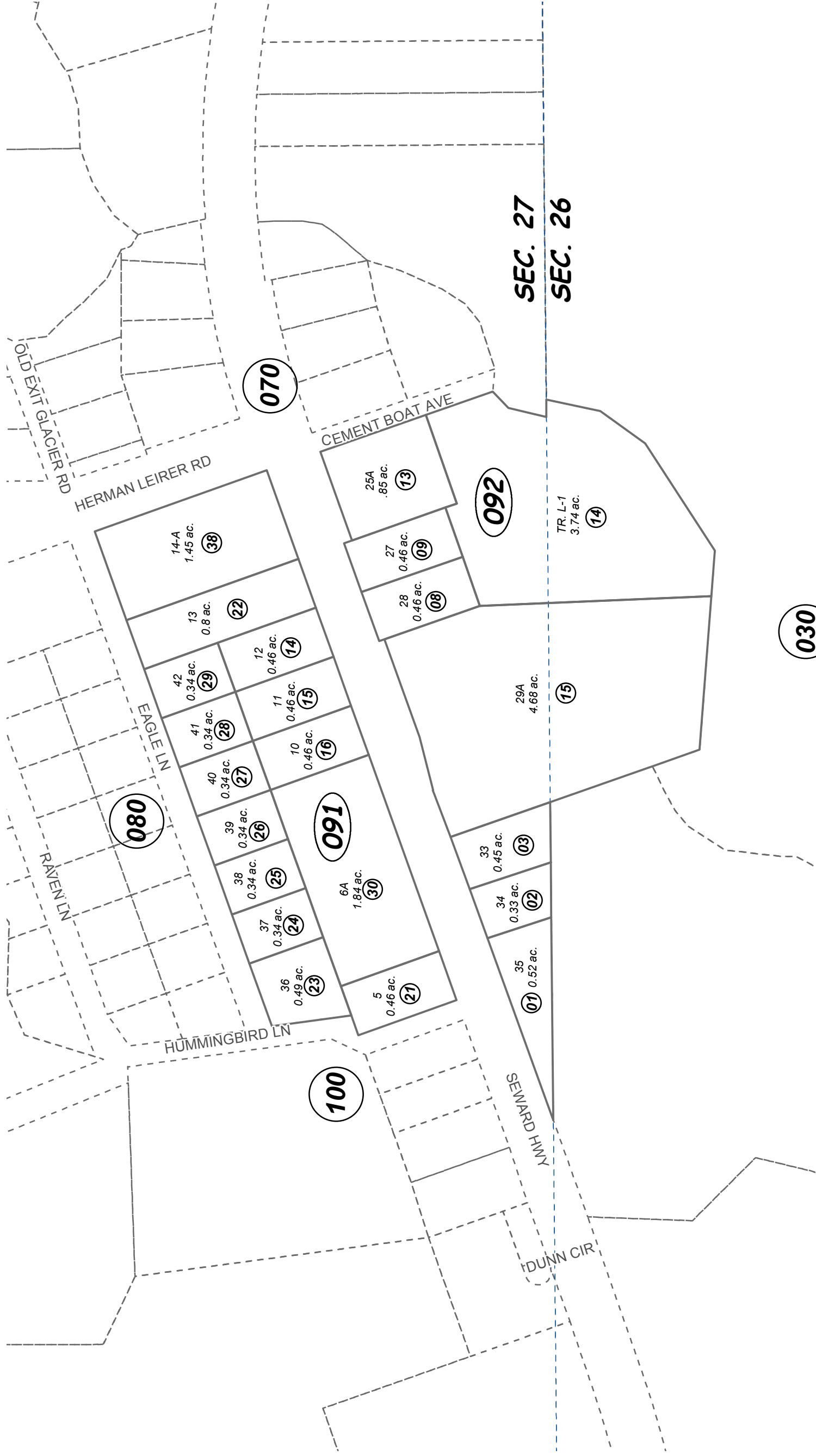


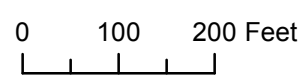
144-090

POR. SEC. 26 & 27, T01N, R01W, S.M.



FEBRUARY 2, 2017

For 2018 assessment roll	
Delete	Revise
To	13,15
(ACREAGE CHANGE)	



FOLZ SUB SW0000024  
 FOLZ SUB LOTS 6 THRU 9 REPLAT SW0910018  
 FOLZ SUB REVISED SBS ADDN SW0980009  
 FOLZ SUB CONANT REPLAT SW2003005  
 SEWARD HWY MP 0-8 RIGHT-OF-WAY MAP SW2013001

Assessor's Map  
 Kenai Peninsula Borough

Note- Assessor's block Numbers Shown in Ellipses  
 Assessor's Parcel Numbers Shown in Circles

This map is prepared  
 for Kenai Peninsula  
 Borough Assessing Dept.  
 use only and is not  
 intended for conveyance  
 nor is it a survey.