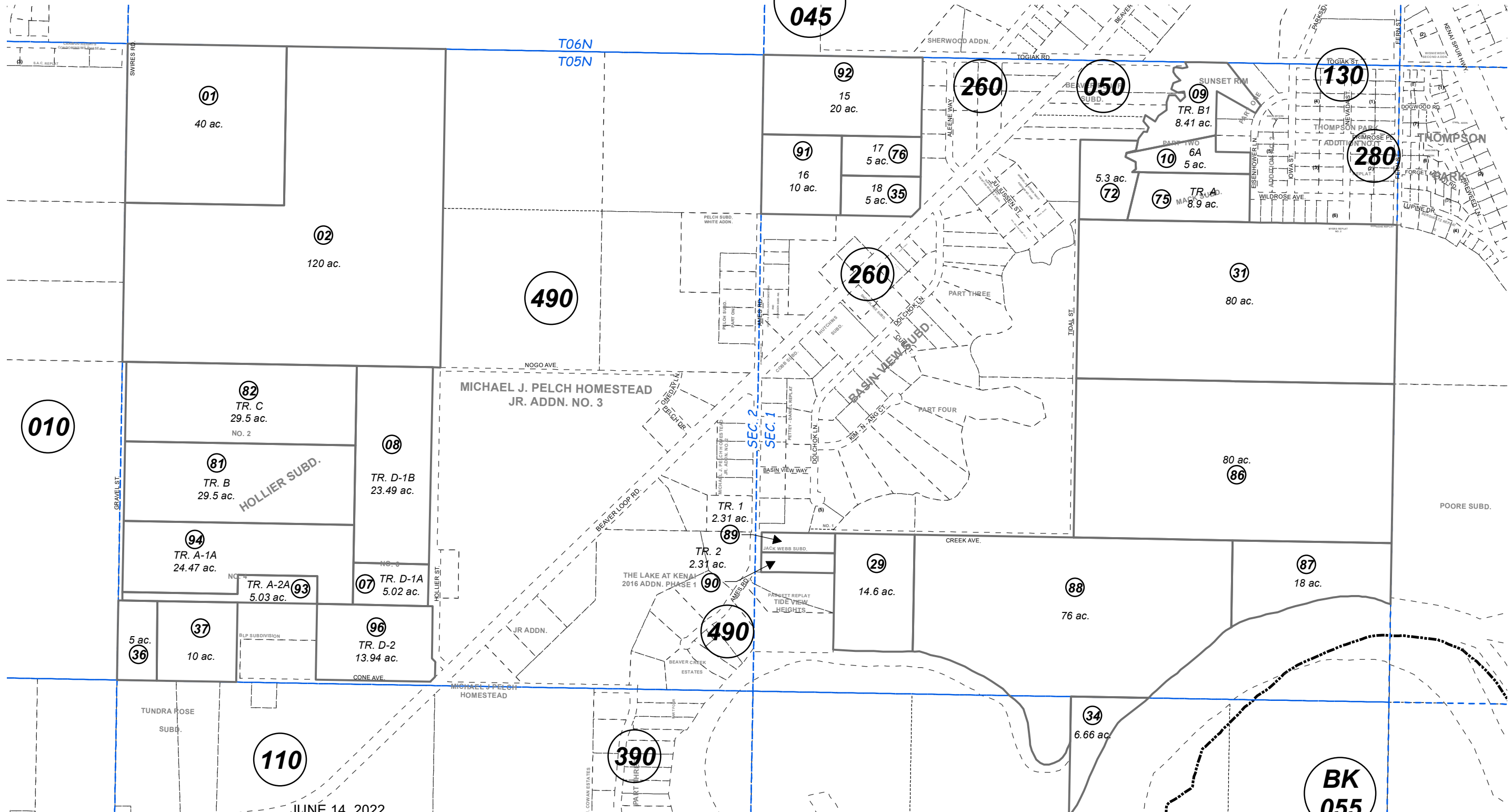


BK 045

130

280

BK 055



010

490

260

490

390

110

JUNE 14, 2022

For 2023 assessment roll		
Delete	Add	Revise
To		
98	049-490+	

- MACK SUB KN0780041
- SUNSET RIM SUB PART 1 KN0800025
- HOLLIER SUB NO 2 KN0830053
- JACK WEBB SUB KN0840045
- HOLLIER SUB NUMBER FOUR KN0870041
- HOLLIER SUB NO 5 KN0920085
- TIDE VIEW HEIGHTS SUB KN0930085
- HOLLIER SUB NO 6 KN2009053
- SUNSET RIM SUB PART TWO KN2010048

Assessor's Map
Kenai Peninsula Borough

This map is prepared for Kenai Peninsula Borough Assessing Dept. use only and is not intended for conveyance nor is it a survey.

Note- Assessor's block Numbers Shown in Ellipses
Assessor's Parcel Numbers Shown in Circles

