

POR. N1/2 SE1/4 SEC. 36, T05N, R10W, S.M.

058-363

YESVA LN.

WICK SPRUCE DR.

JABILA DR.

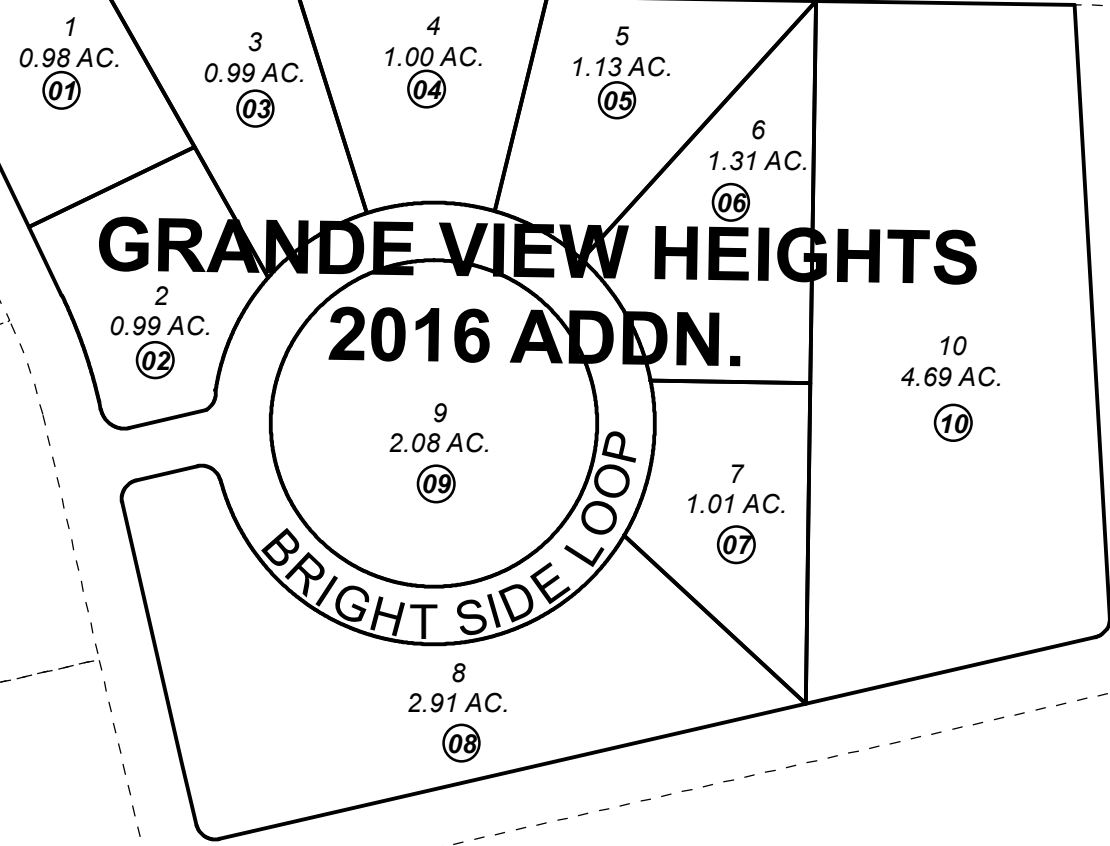
GRANDE HEIGHTS DR.

360

360

360

040



JUNE 29, 2016



0 50 100 200 Feet

For 2017 assessment roll		
Delete	Add	Revise
To		
NEW PAGE		

Assessor's Map
Kenai Peninsula Borough

GRANDE VIEW HEIGHTS 2016 ADDN KN2016026

This map is prepared for Kenai Peninsula Borough Assessing Dept. use only and is not intended for conveyance nor is it a survey.

Note- Assessor's block Numbers Shown in Ellipses
Assessor's Parcel Numbers Shown in Circles