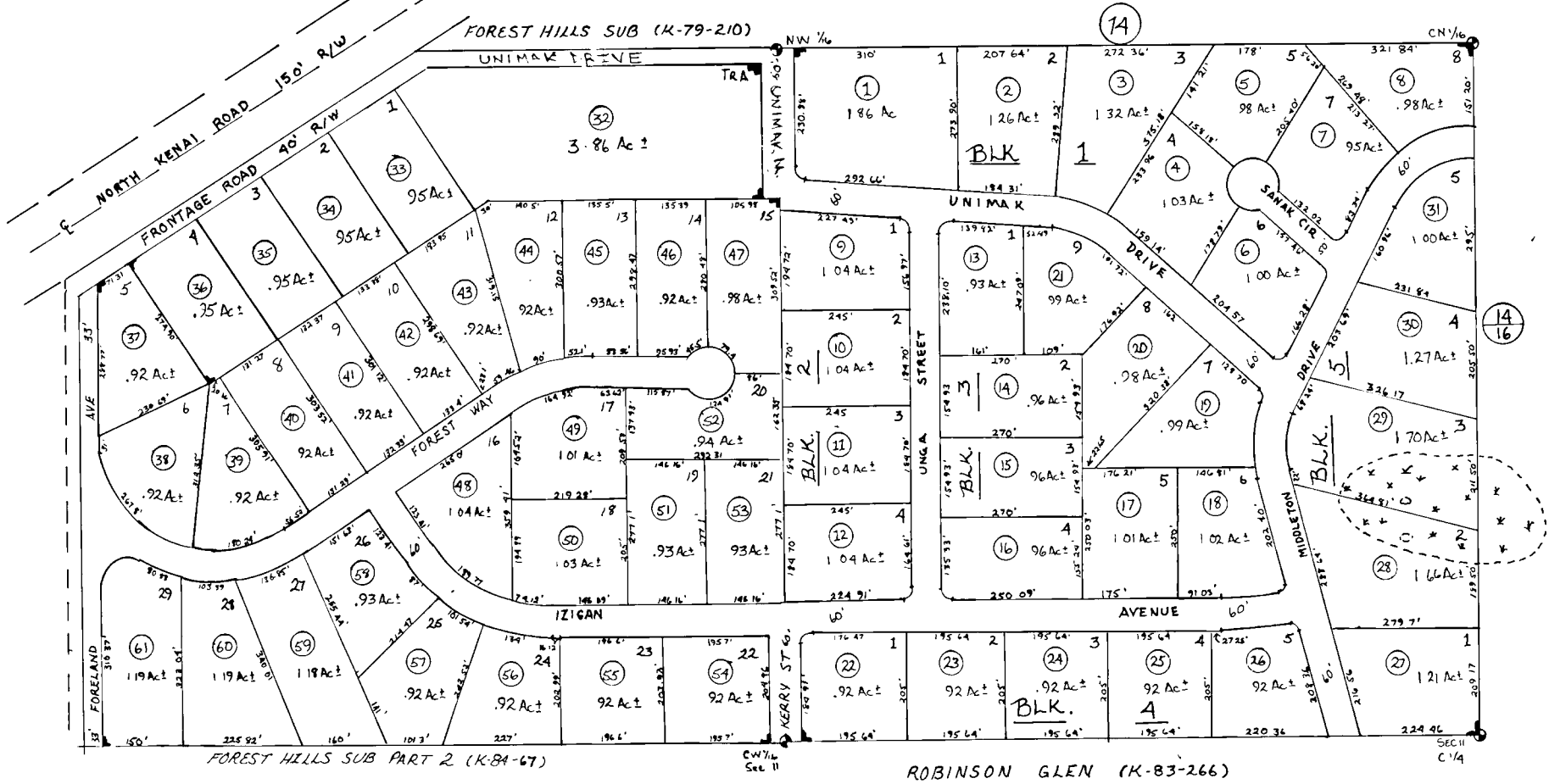


Por. NW 1/4 Sec. 11 T7N R12W S.M.



SN2002-03 Kodiar & Sudak  
Remained UNIMAK DR

14

NOTE - Assessor's Block Numbers Shown in Ellipses  
Assessor's Parcel Numbers Shown in Circles

Assessor's Map  
Kenai Peninsula Borough, Alaska