

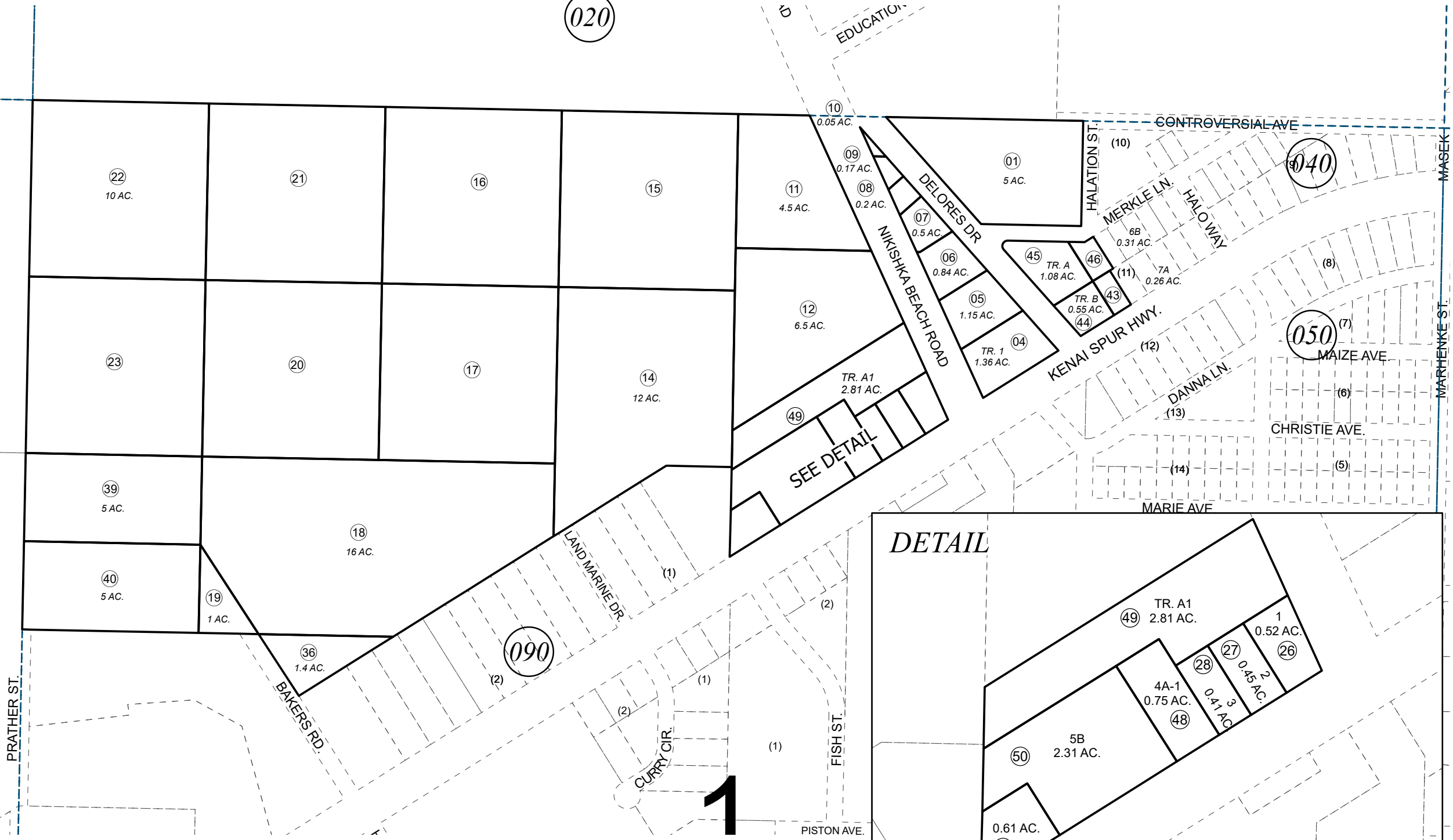
POR. SEC. 1, T07N, R12W, S.M.

012-080

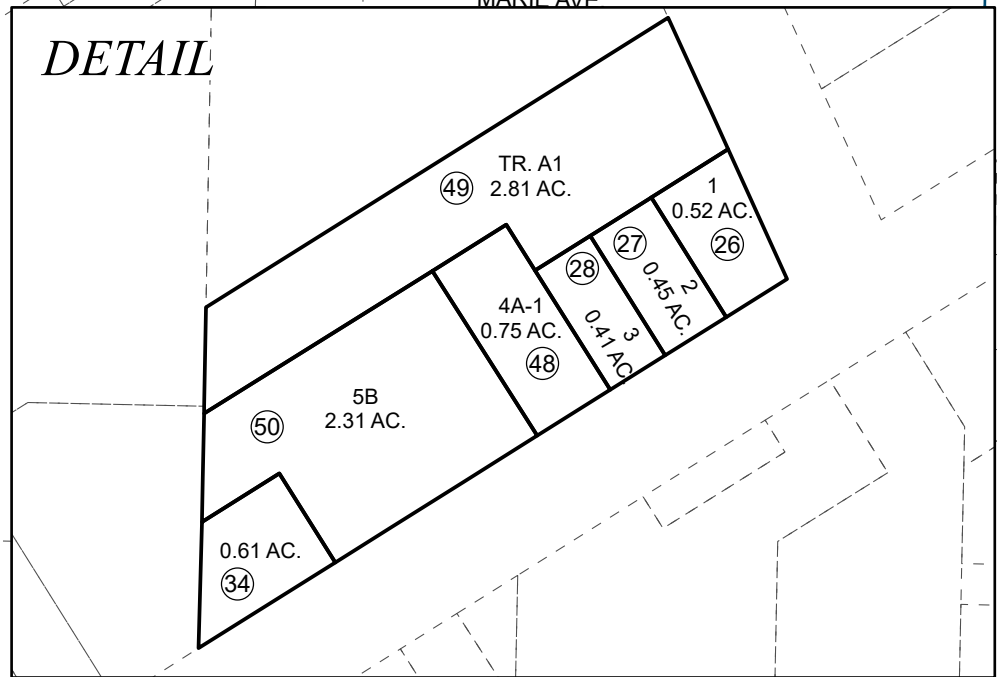
020

390

130



SEE DETAIL



0 100 200 400 Feet

JULY 1, 2022

For 2023 assessment roll		
Delete	Add	Revise
To		
30,33, 41,42, 47	49,50	

Assessor's Map
Kenai Peninsula Borough

MAC MCGAHAN SUB KN0001468
NORTH KENAI FIRE DEPARTMENT KN0730013
MAC MCGAHAN SUB RESUB NO 1 KN0730082
AURORA HEIGHTS ADDN TO BLOCK 11 & REPLAT KN0780197
MAC MCGAHAN SUB 1983 ADDN KN0830031
MAC MCGAHAN SUB 2010 ADDN KN2011055
MAC MCGAHAN SUB 2020 REPLAT KN2022018

This map is prepared for Kenai Peninsula Borough Assessing Dept. use only and is not intended for conveyance nor is it a survey.
Note- Assessor's block Numbers Shown in Ellipses
Assessor's Parcel Numbers Shown in Circles