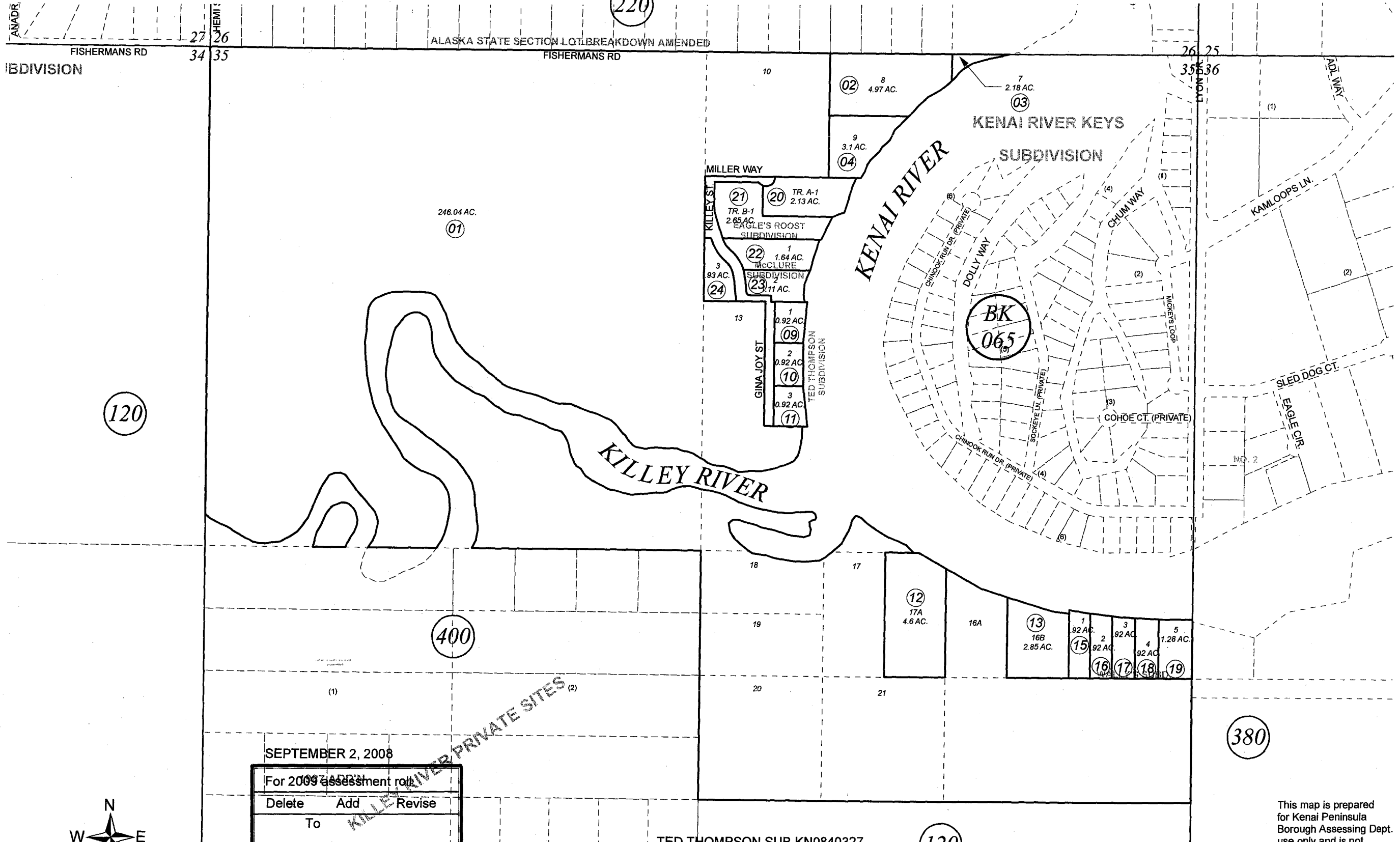


220

ALASKA STATE SECTION LOT BREAKDOWN AMENDED



120

400

380

120

SEPTEMBER 2, 2008

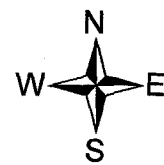
For 2009 assessment roll

Delete	Add	Revise
	To	
8	22-24	

Assessor's Map
Kenai Peninsula Borough

TED THOMPSON SUB KN0840327
WALLYS SUB KN0850086
EAGLES ROOST SUB KN0970020
MCCLURE SUB KN2008077

Note- Assessor's block Numbers Shown in Ellipses
Assessor's Parcel Numbers Shown in Circles



This map is prepared for Kenai Peninsula Borough Assessing Dept. use only and is not intended for conveyance nor is it a survey.