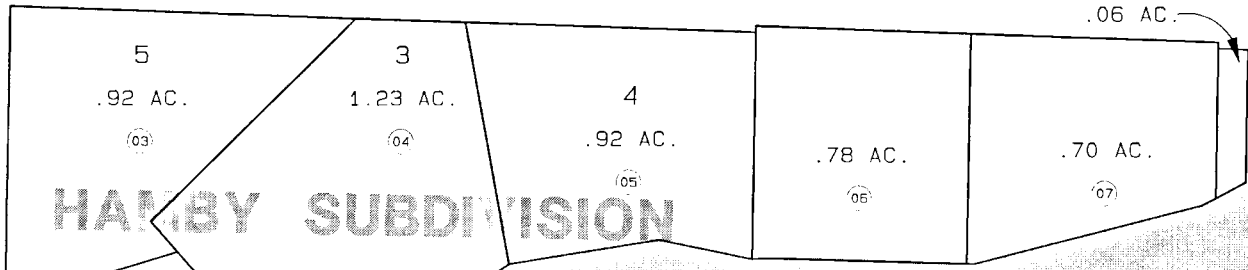


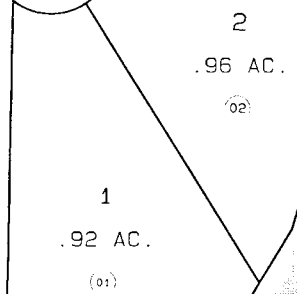
9

HALBOUTY RD.

BALLARD DR.



HAMBY SUBDIVISION



BARBARA LAKE

31

9

17



DATE: AUGUST 9, 1995
 FOR 1996 ASSESSMENT ROLL
 DELETE ADD REVISED
 TO
 6.7
 (ACREAGE CHANGE)

Assessor's Map
 Kenai Peninsula Borough

HAMBY SUB. KNE20099

THIS MAP IS PREPARED FOR FINAL PENINSULA BOROUGH ASSESSING DEPT USE ONLY AND IS NOT INTENDED FOR ANY OTHER USE OR REPRESENTATION

NOTE Assessor's Block Numbers Shown In Ellipses
 Assessor's Parcel Numbers Shown In Circles