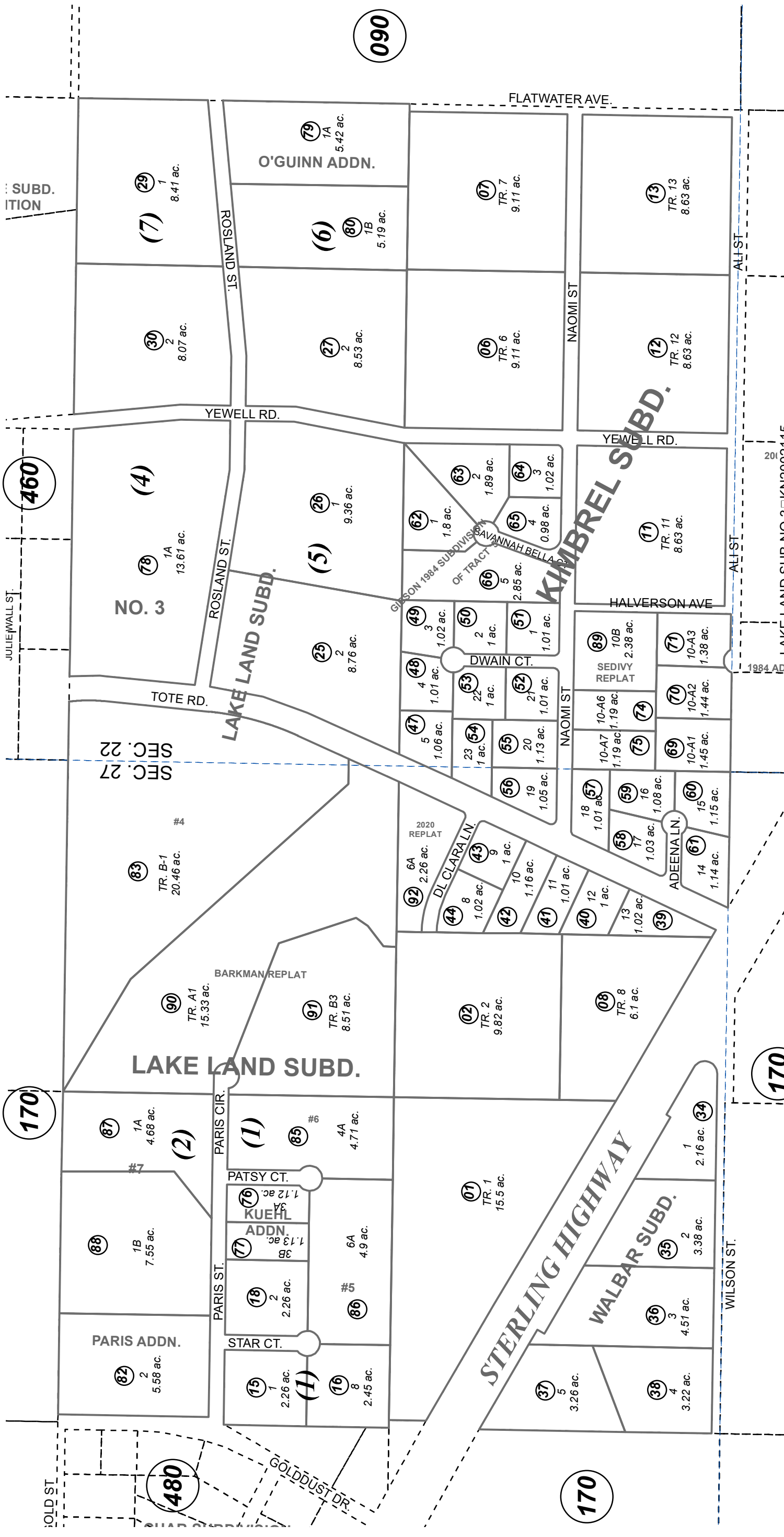


NE 1/4 SEC. 27 & SE 1/4 SEC. 22, T04N, R11W, S.M.

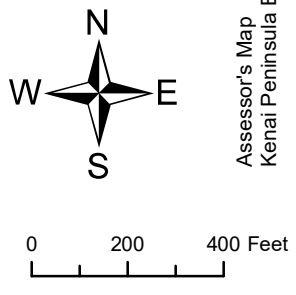
131-400



JULY 23, 2021

For 2022 assessment roll
Delete
Add
Revise

To  
45,46 92



- KIMBREL SUB  KN0760068
- LAKE LAND SUB  KN0790042
- WALBAR SUB  KN0810127
- KIMBREL SUB GIBSON 1981 SUB OF TRACTS 3  KN0820063
- KIMBREL SUB GIBSON 1984 SUB  KN0850040
- LAKE LAND SUB NO 2  KN0930062
- LAKE LAND SUB KUEHL ADDN  KN0960052
- KIMBREL SUB WINN REPLAT  KN0960056

- LAKE LAND SUB NO 3  KN2002115
- LAKE LAND SUB O'GUINN ADDN KN2005072
- LAKE LAND SUB PARIS ADDN KN2009093
- LAKE LAND SUB #4 KN2011069
- LAKE LAND SUB #6 KN2012036
- LAKE LAND SUB #5 KN2012069
- LAKE LAND SUB #7 KN2014053
- KIMBREL SUB SEDIVY REPLAT KN2020024
- LAKE LAND SUB BARKMAN REPLAT KN2020028
- KIMBREL SUB 2020 REPLAT KN2021036- Assessor's block Numbers Shown in Ellipses

This map is prepared for Kenai Peninsula Borough Assessing Dept. use only and is not intended for conveyance nor is it a survey.

Assessor's Map  
Kenai Peninsula Borough