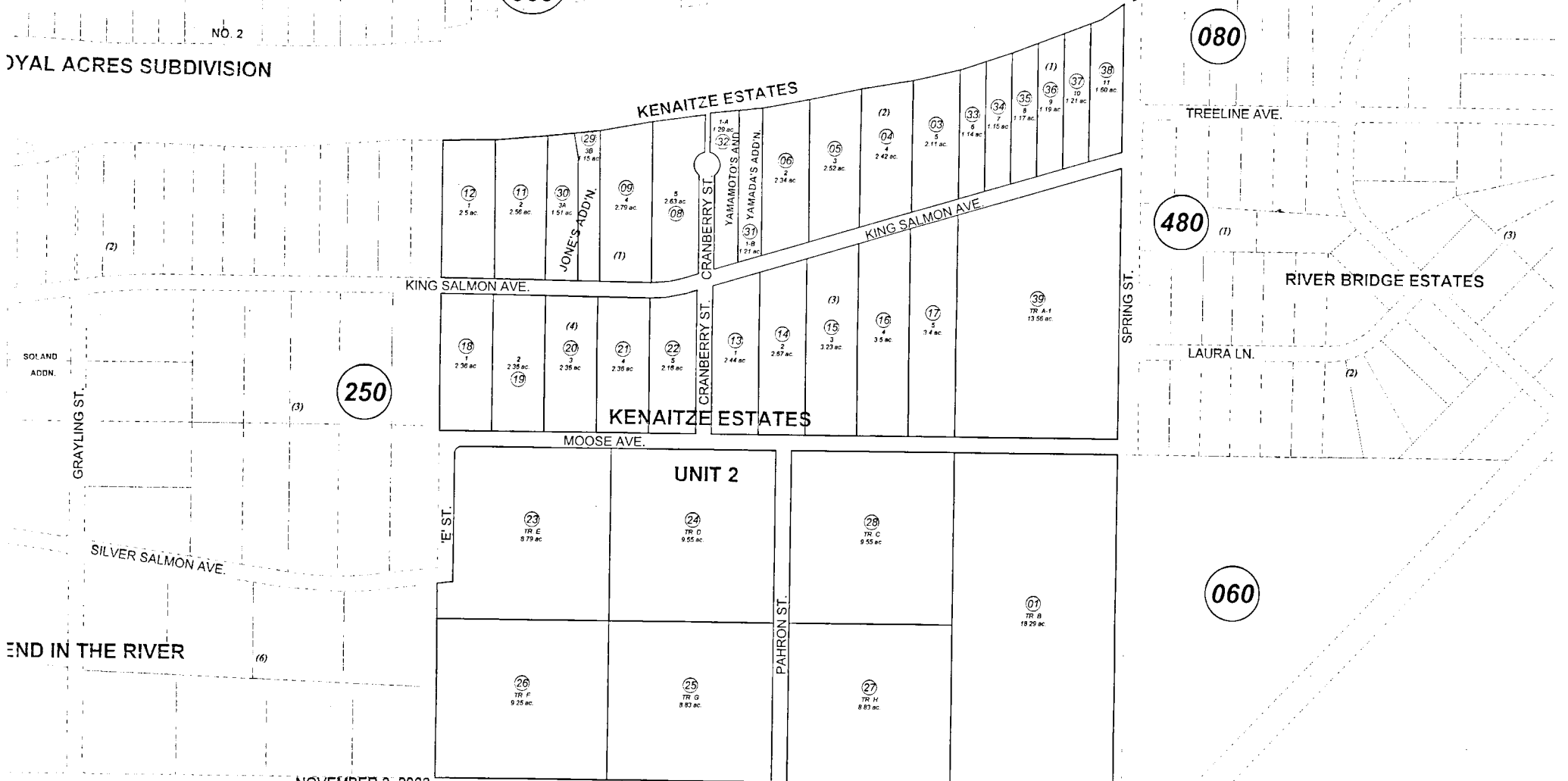


**BK**  
**063**

NO. 2

ROYAL ACRES SUBDIVISION



SOLAND ADDN.

GRAYLING ST.

SILVER SALMON AVE.

END IN THE RIVER

E ST.

PAHRON ST.

SPRING ST.

LAURA LN.

TREELINE AVE.

RIVER BRIDGE ESTATES

KENAITZE ESTATES

KENAITZE ESTATES

UNIT 2

MOOSE AVE.

KING SALMON AVE.

KING SALMON AVE.

JONES ADDN.

CRANBERRY ST.

CRANBERRY ST.

YAMAMOTO'S ADDN.

YAMADA'S ADDN.

12  
2.5 ac

11  
2.56 ac

30  
1.51 ac

09  
2.79 ac

08  
2.63 ac

13  
2.34 ac

14  
2.52 ac

04  
2.42 ac

03  
2.11 ac

33  
1.14 ac

34  
1.15 ac

35  
1.17 ac

36  
1.19 ac

37  
1.27 ac

38  
1.60 ac

18  
2.96 ac

19  
2.38 ac

20  
2.38 ac

21  
2.36 ac

22  
2.18 ac

13  
2.44 ac

14  
2.87 ac

15  
3.23 ac

16  
3.5 ac

17  
7.4 ac

39  
13.56 ac

23  
7.79 ac

24  
9.55 ac

28  
9.55 ac

26  
9.35 ac

25  
8.82 ac

27  
8.87 ac

07  
18.29 ac

NOVEMBER 3, 2003

FUNNY RIVER RD

**050**

KENAITZE ESTATES SUB-KN0750123  
 KENAITZE ESTATES SUB UNIT 2-KN0760114  
 KENAITZE ESTATES SUB JONES ADDN-KN0860038  
 KENAITZE ESTATES SUB YAMAMOTOS & YAMADAS ADDN-KN0860209  
 KENAITZE ESTATES SUB FALL ADDN-KN2003058

Assessor's Map  
Kenai Peninsula Borough

For 2004 assessment roll		
Delete	Add	Revise
	To	
02	33-39	



This map is prepared for Kenai Peninsula Borough Assessing Dept. use only and is not intended for conveyance nor is it a survey.

Note- Assessor's block Numbers Shown in Ellipses  
Assessor's Parcel Numbers Shown in Circles