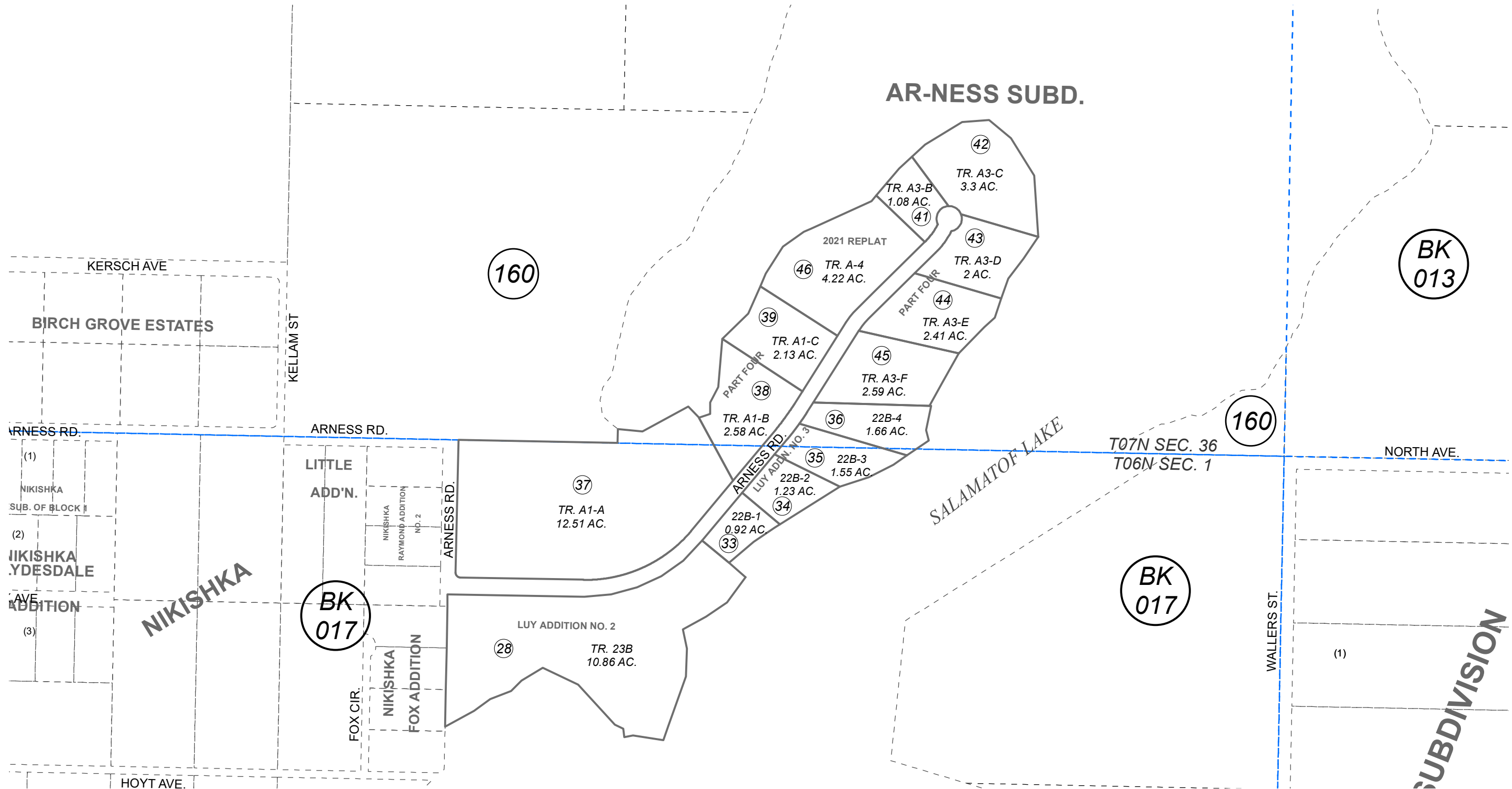


POR. SE1/4 SEC. 36, T07N, R12W & POR. NE1/4 SEC. 1, T06N, R12W, S.M.

015-241

AR-NESS SUBD.



0 100 200 400 Feet

NOVEMBER 3, 2021

For 2022 assessment roll		
Delete	Add	Revise
To		
31,40	46	

Assessor's Map
Kenai Peninsula Borough

AR-NESS SUB LUY ADDN NO 2 KN0960062
 AR-NESS SUB PART TWO KN0970094
 AR-NESS SUB PART THREE KN2005060
 AR-NESS SUB LUY ADDN NO 3 KN2010063
 AR-NESS SUB PART FOUR KN2011072
 AR-NESS SUB 2021 REPLAT KN2021062

This map is prepared for Kenai Peninsula Borough Assessing Dept. use only and is not intended for conveyance nor is it a survey.
 Note- Assessor's block Numbers Shown in Ellipses
 Assessor's Parcel Numbers Shown in Circles