

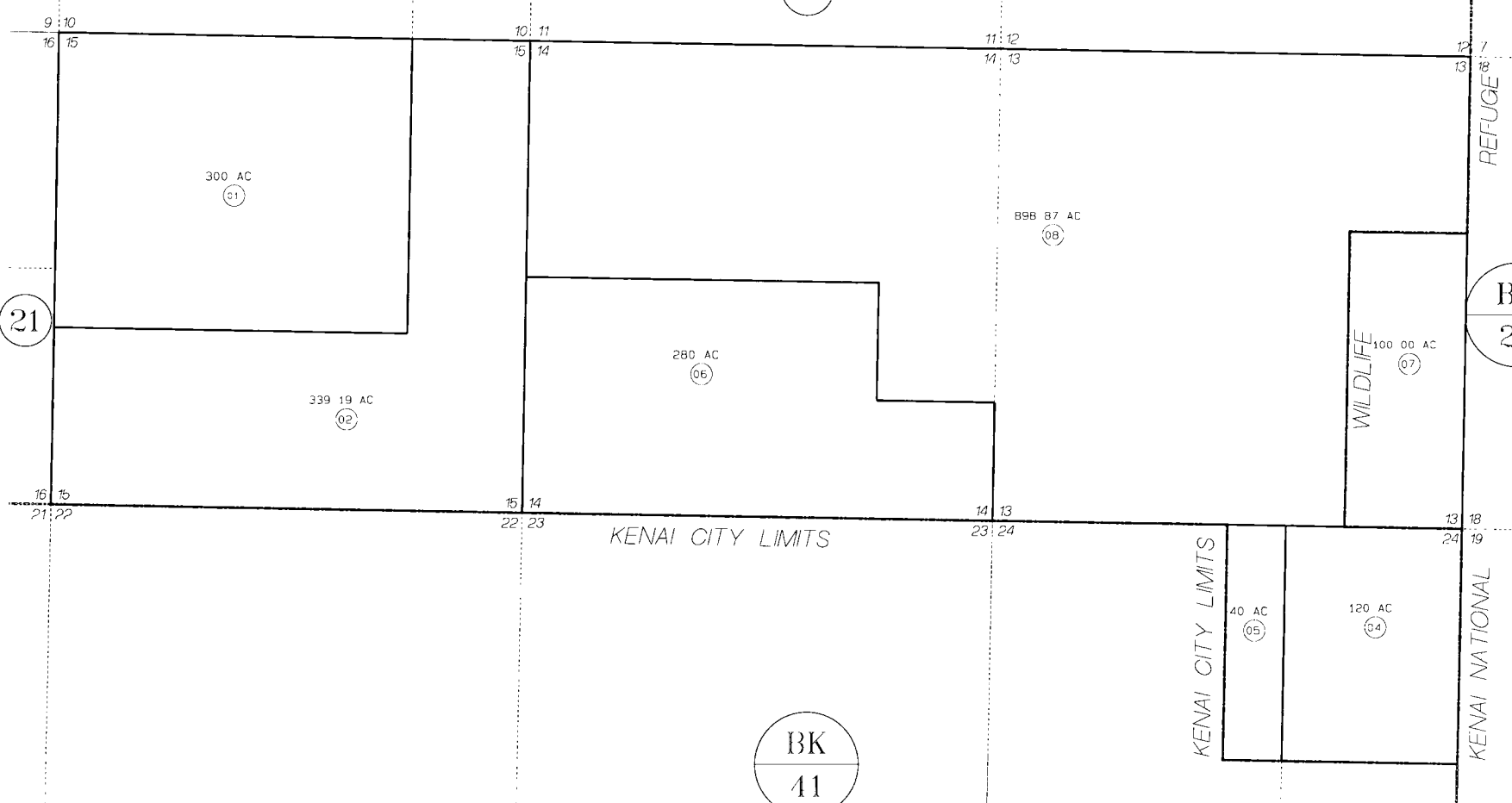
SEC. 13-15 & POR. SEC. 24, T6N, R11W, S.M.

017-220

9

BK
25

BK
41



DATE DEC 16, 1999	
OR 20 00	ASSESSMENT NO. 1
DELETED	ADD
3	7,8

Assessor's Map
Kenai Peninsula Borough

THIS MAP IS PREPARED FOR KENAI PENINSULA BOROUGH ASSESSING DEPT. USE ON PLANS IS NOT INTENDED FOR CONVEYANCE NOR IS IT A SURVEY
NOTE - Assessor's Block Numbers Shown in Ellipses Assessor's Parcel Numbers Shown in Circles