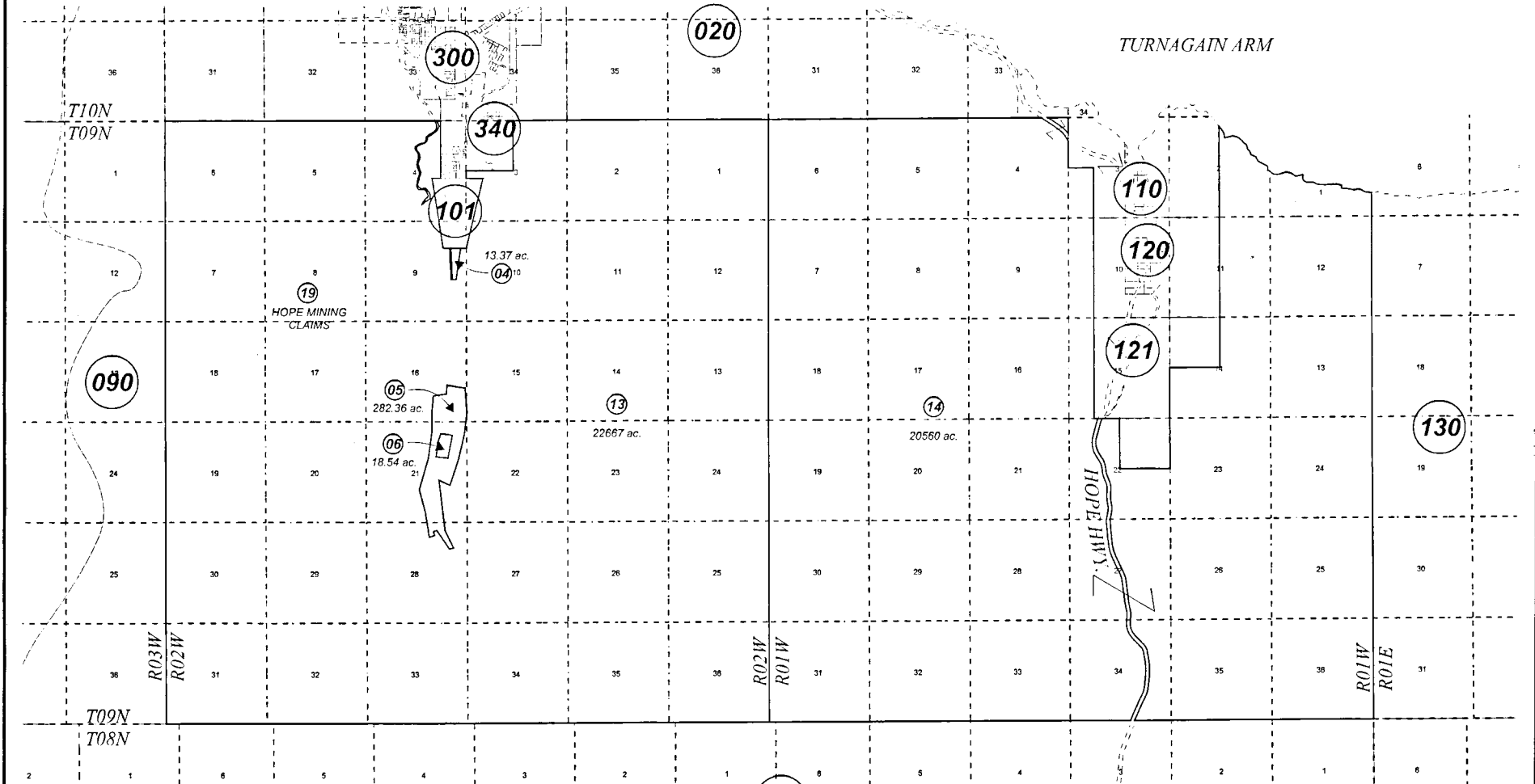


T09N R01W & R02W, S.M.

035-100



OCTOBER 8, 2003

For 2004 assessment roll		
Delete	Add	Revise
To		
20,21	035101+	
17,18	035121+	



Assessor's Map  
Kenai Peninsula Borough

150

US MINERAL SURVEY 1449 SW0001449  
 US MINERAL SURVEY 1451 SW0001451  
 US SURVEY 2642 SW0002642  
 US SURVEY 2761 SW0002761

This map is prepared  
 for Kenai Peninsula  
 Borough Assessing Dept.  
 use only and is not  
 intended for conveyance  
 nor is it a survey.

Note- Assessor's block Numbers Shown in Ellipses  
 Assessor's Parcel Numbers Shown in Circles