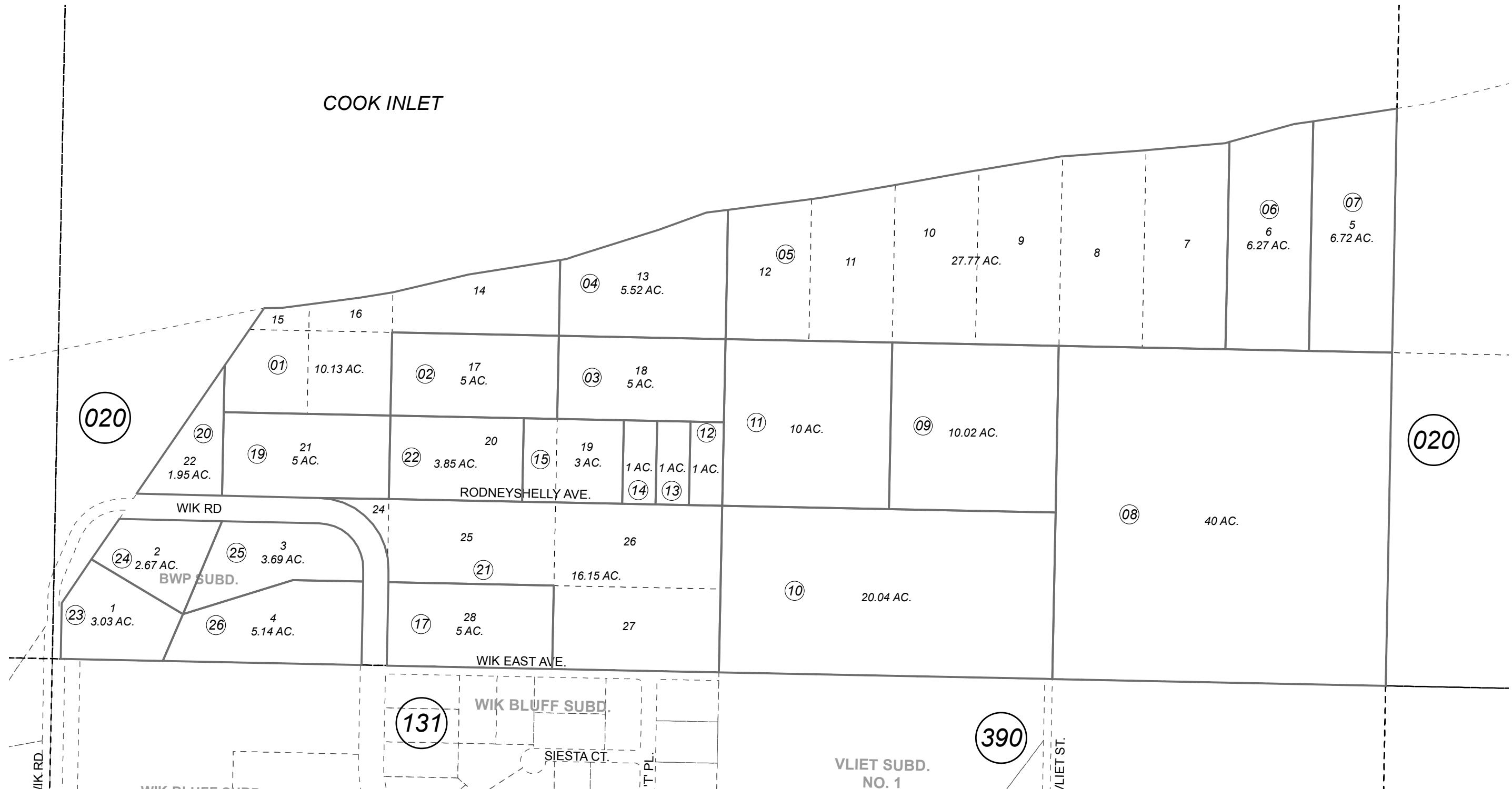


POR. SEC. 35, T08N, R12W, S.M.

012-030

COOK INLET

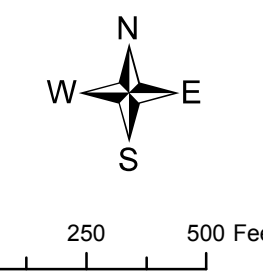


020

020

131

390



DECEMBER 29, 2016

For 2017 assessment roll		
Delete	Add	Revise
To		09. 10
(ACREAGE CORRECTION)		

Assessor's Map
Kenai Peninsula Borough

BWP SUB KN2005114
RECORD OF SURVEY KN2016075

This map is prepared for Kenai Peninsula Borough Assessing Dept. use only and is not intended for conveyance nor is it a survey.
Note- Assessor's block Numbers Shown in Ellipses
Assessor's Parcel Numbers Shown in Circles