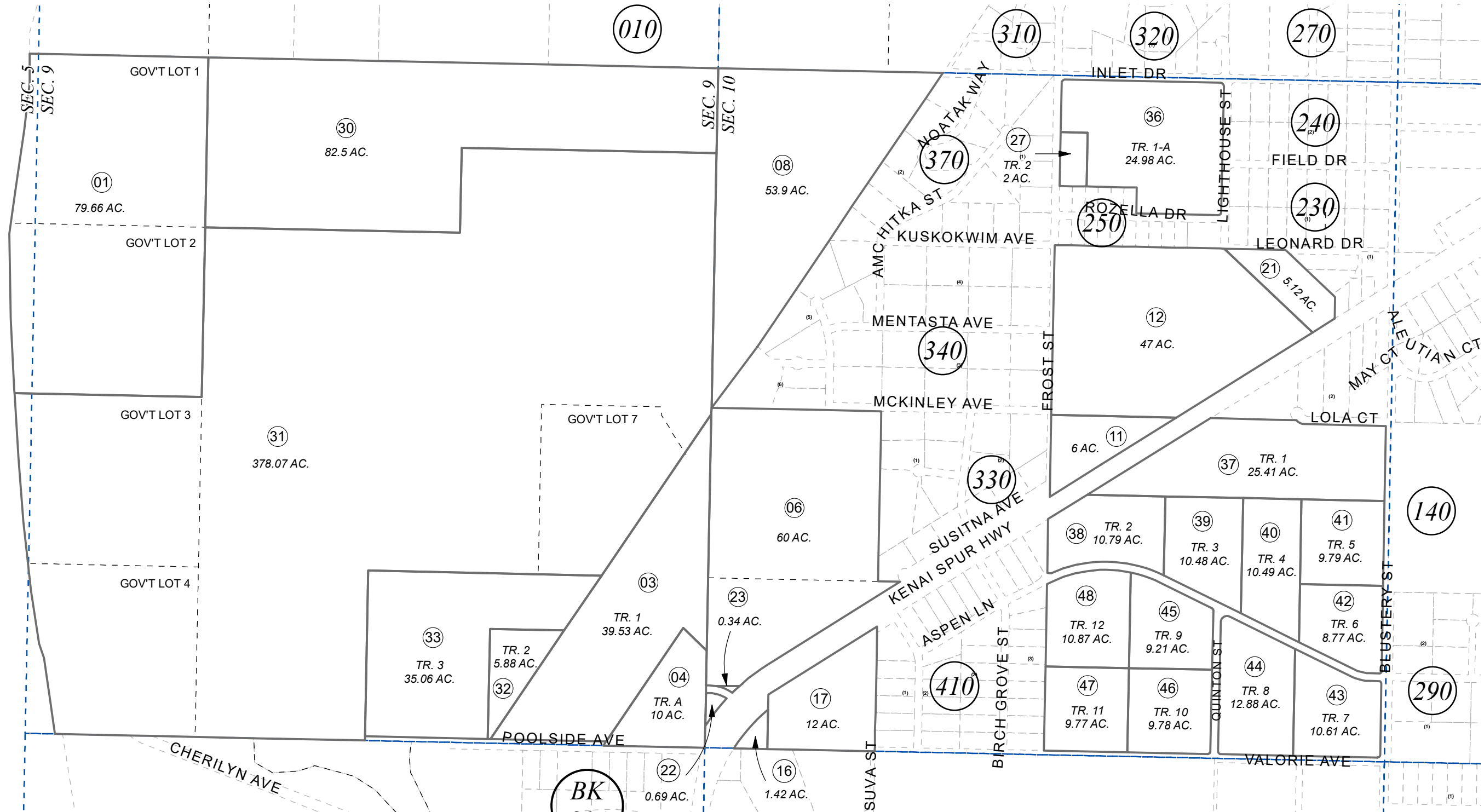


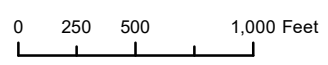
POR. SEC. 5, 9 & 10, T07N, R12W, S.M.

012-210



JANUARY 5, 2024

For 2024 assessment roll		
Delete	Add	Revise
	To	
19	37-48	



Assessor's Map
Kenai Peninsula Borough

DREW SUB #3 KN0750072
 NIKISKI PARK SUB KN0820130
 DREW SUB ADDN NO 4 KN2011100
 JELINEK SUB KN2023067

This map is prepared for Kenai Peninsula Borough Assessing Dept. use only and is not intended for conveyance nor is it a survey.

Note- Assessor's block Numbers Shown in Elipses
 Assessor's Parcel Numbers Shown in Circles