

KENAI SPUR HWY.

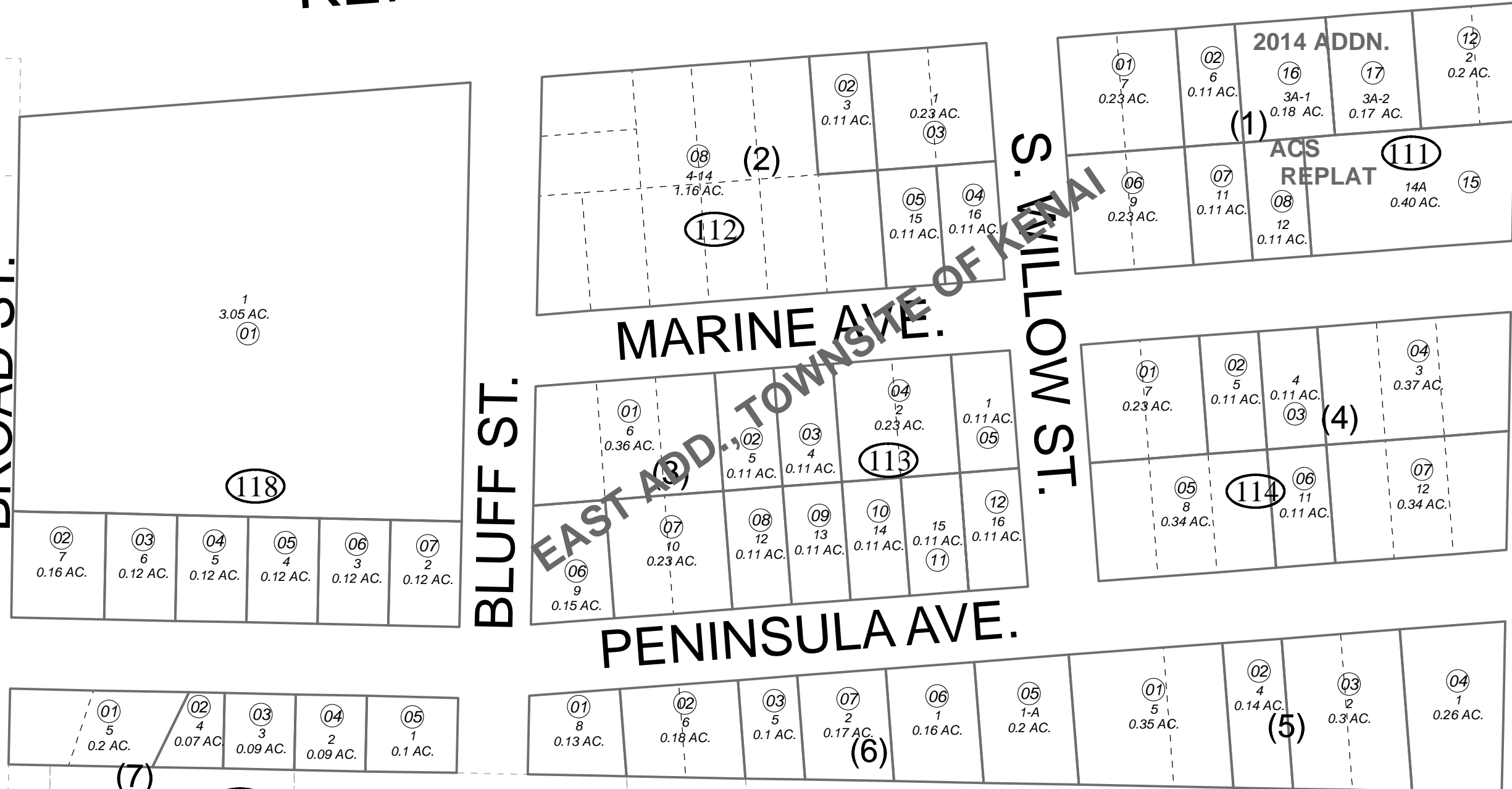
BK
043

BROAD ST.

BLUFF ST.

S. WILLOW ST.

LAKE ST.



060

050

050

116

115

117

AUGUST 29, 2014

For 2015 assessment roll		
Delete	Add	Revise
To		
11114	11116	
	11117	



0 50 100 Feet

Assessor's Map
Kenai Peninsula Borough

TYSON SUB KN0001504
EAST ADDN TOWNSITE OF KENAI - US SURVEY KN 0003025
KENAI TOWNSITE EAST ADDN REPLAT LOT 1 KN 0770076
KENAI TOWNSITE ACS REPLAT KN2004006
KENAI TOWNSITE 2014 ADDN KN2014047

This map is prepared for Kenai Peninsula Borough Assessing Dept. use only and is not intended for conveyance nor is it a survey.
Note- Assessor's block Numbers Shown in Ellipses
Assessor's Parcel Numbers Shown in Circles