

POR. S1/2 SEC. 22, T04S, R15W, S.M.

165-700

COOK  
INLET

TELNI SUBD.

DENAI

090

090

610

730

165

165

JANUARY 5, 2006

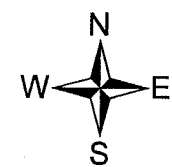
For 2006 assessment roll

Delete	Add	Revise
To		
10,42	43	

To

10,42

43

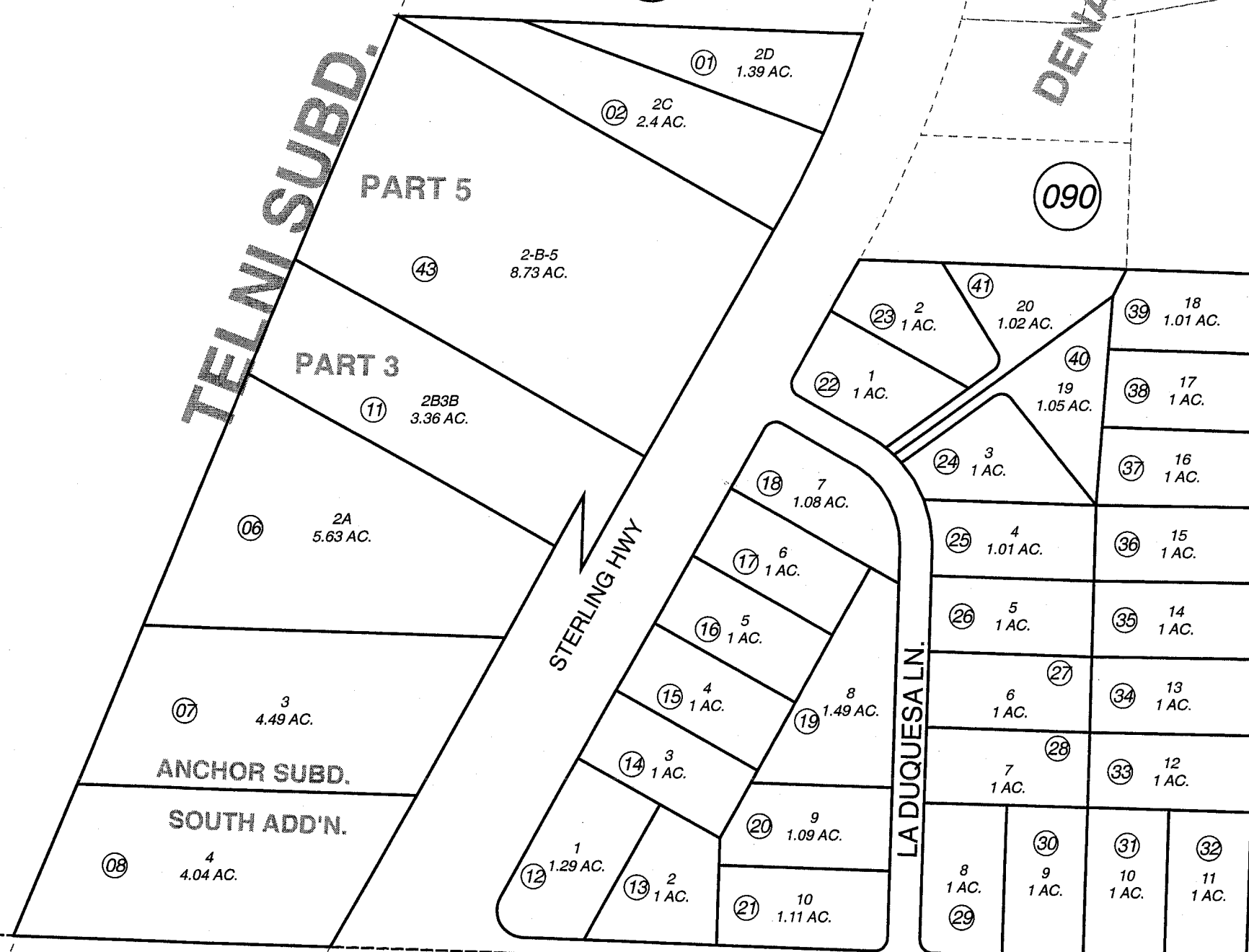


Assessor's Map  
Kenai Peninsula Borough

ANCHOR SUB SOUTH ADDN □ HM0720517  
 TELNI SUB □ HM0780030  
 TELNI SUB PART 3 □ HM0860072  
 ROBERT ESTATES □ HM0970069  
 TELNI SUB PART 4 □ HM2000068  
 TELNI SUB PART 5 □ HM2005084

This map is prepared  
for Kenai Peninsula  
Borough Assessing Dept.  
use only and is not  
intended for conveyance  
nor is it a survey.

Note- Assessor's block Numbers Shown in Ellipses  
Assessor's Parcel Numbers Shown in Circles



VALLEYSIDE AVE.

22 23  
27 26