

E REDOUBT AVE

SEC 29

SEC 32

020

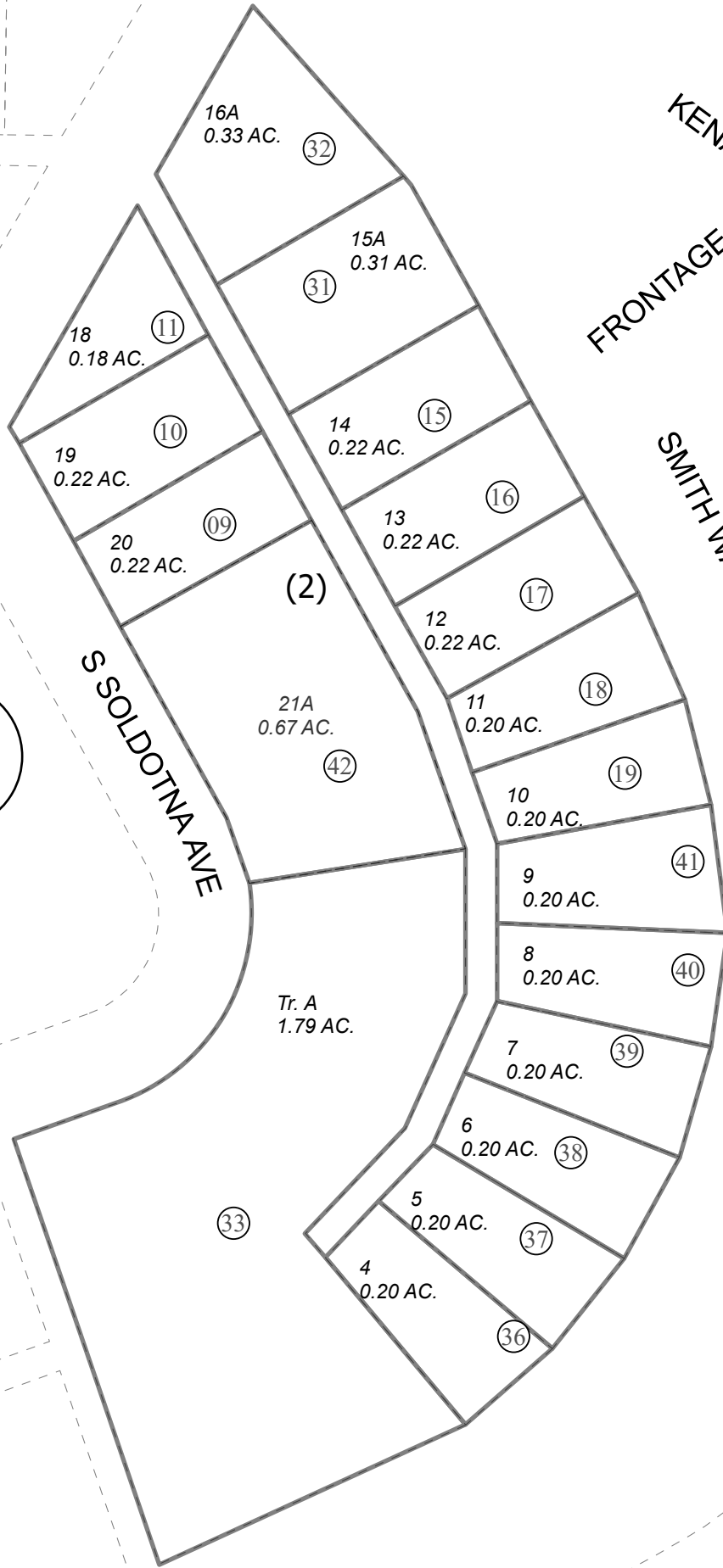
E BELUGA AVE

017

018

021

041



KENAI SPUR HWY
FRONTAGE RD

SMITH WAY

S SOLDOTNA AVE

STERLING HWY

This map is prepared for Kenai Peninsula Borough Assessing Dept. use only and is not intended for conveyance nor is it a survey.

Note- Assessor's block Numbers Shown in Ellipses
Assessor's Parcel Numbers Shown in Circles

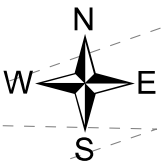
APRIL 25, 2024

For 2025 assessment roll

Delete	Add	Revise
06-08	To 42	

SOLDOTNA JUNCTION KN0000076
 SOLDOTNA JUNCTION REPLAT LOTS 15-17 BLK 2 KN0750022
 SOLDOTNA JUNCTION NO. ELEVEN KN0860086
 SOLDOTNA JUNCTION NO. 9 KN0870017
 SOLDOTNA JUNCTION SUB 2023 REPLAT KN2024002

Assessor's Map
Kenai Peninsula Borough



0 50 100 Feet