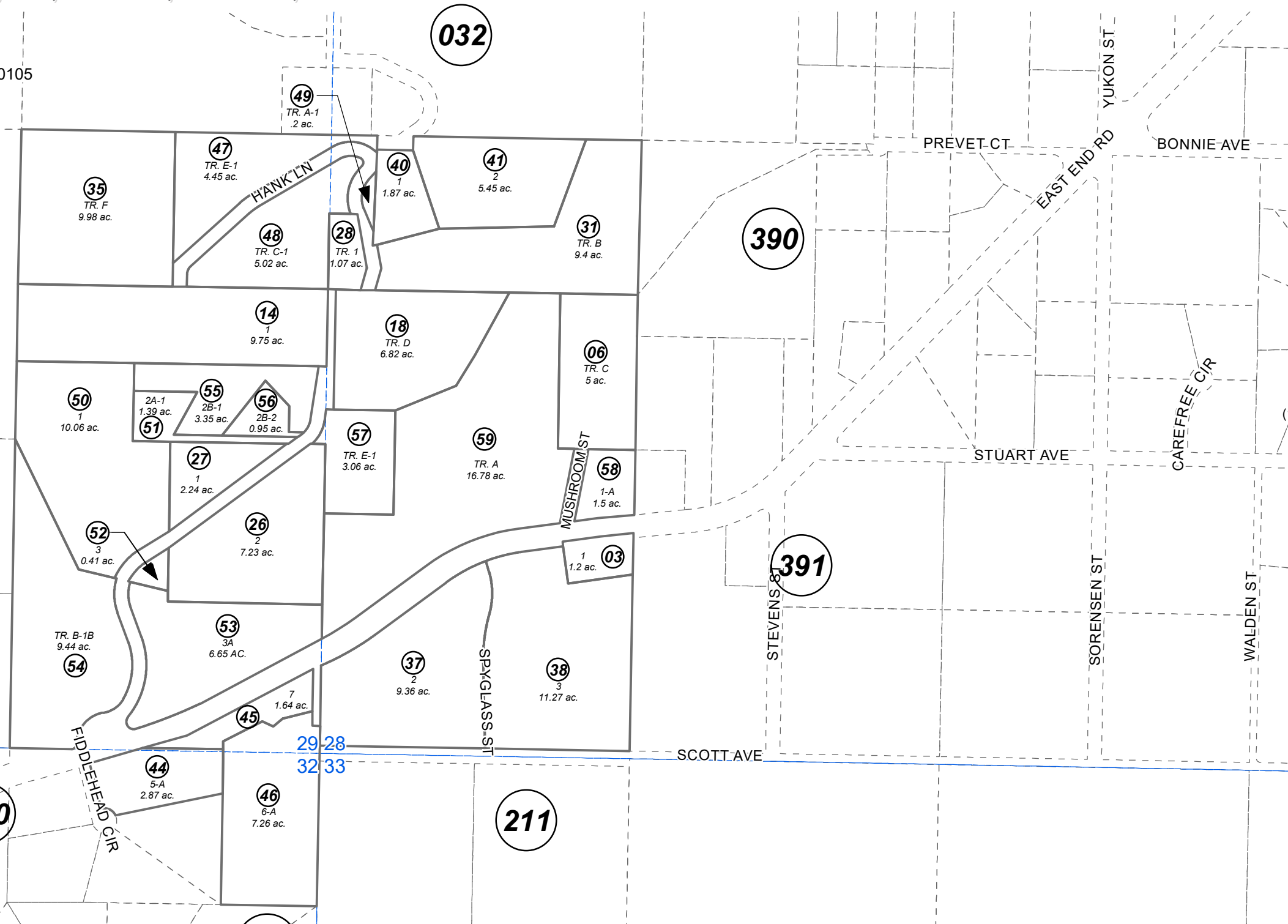


POR. SEC. 28,29,32, T05S, R12W, S.M.

172-200

FRITZ CREEK ACRES SUB HM0770037
 CLARK SUB HM0750054
 FRITZ CREEK ACRES SUB ADDN TRACTS D & E HM0780105
 CLARK TWO SUB HM0800051
 CARL BAIER TR A WEBER 1981 SUB HM0820010
 COYOTE HILL SUB HM0820013
 COYOTE HILL SUB UNIT 2 HM0820037
 COYOTE HILL SUB UNIT 3 HM0820093
 COYOTE HILL SUB UNIT 4 HM0830133
 COYOTE HILL 1985 SUB HM0850070
 FRITZ CREEK ACRES SUB NO 2 HM0880032
 FRITZ CREEK ACRES NO 3 HM0940019
 NESBETT CLYMER WILLIAMS HM2002072
 COYOTE HILL SUB 2006 ADDN HM2006105
 FRITZ CREEK ACRES SUB NO 4 HM2007122
 CARL BAIER TRACTS 2015 ADDN HM2016004
 CLARK THREE SUB HM2018034
 FRITZ CREEK ACRES TRACT E ROW VACATION HM2020025
 FRITZ CREEK ACRES 2022 REPLAT & MUSHROOM ST ROW VACATION HM2022035



032

390

391

210

211

210

JANUARY 6, 2023

For 2022 assessment roll		
Delete	Add	Revise
To		
04,05, 16,17	58,59	



0 200 400 Feet

Assessor's Map
Kenai Peninsula Borough

This map is prepared for Kenai Peninsula Borough Assessing Dept. use only and is not intended for conveyance nor is it a survey.
 Note- Assessor's block Numbers Shown in Ellipses
 Assessor's Parcel Numbers Shown in Circles