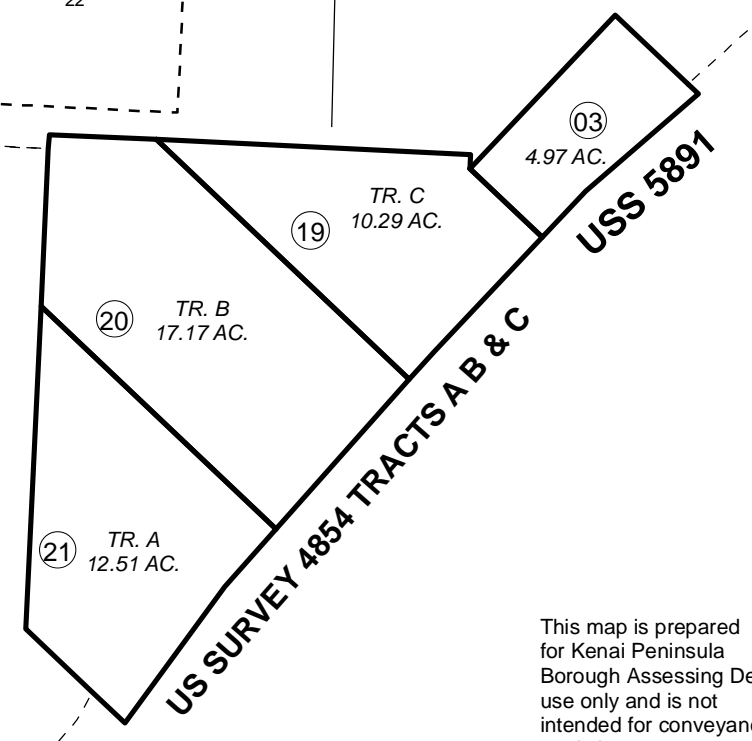
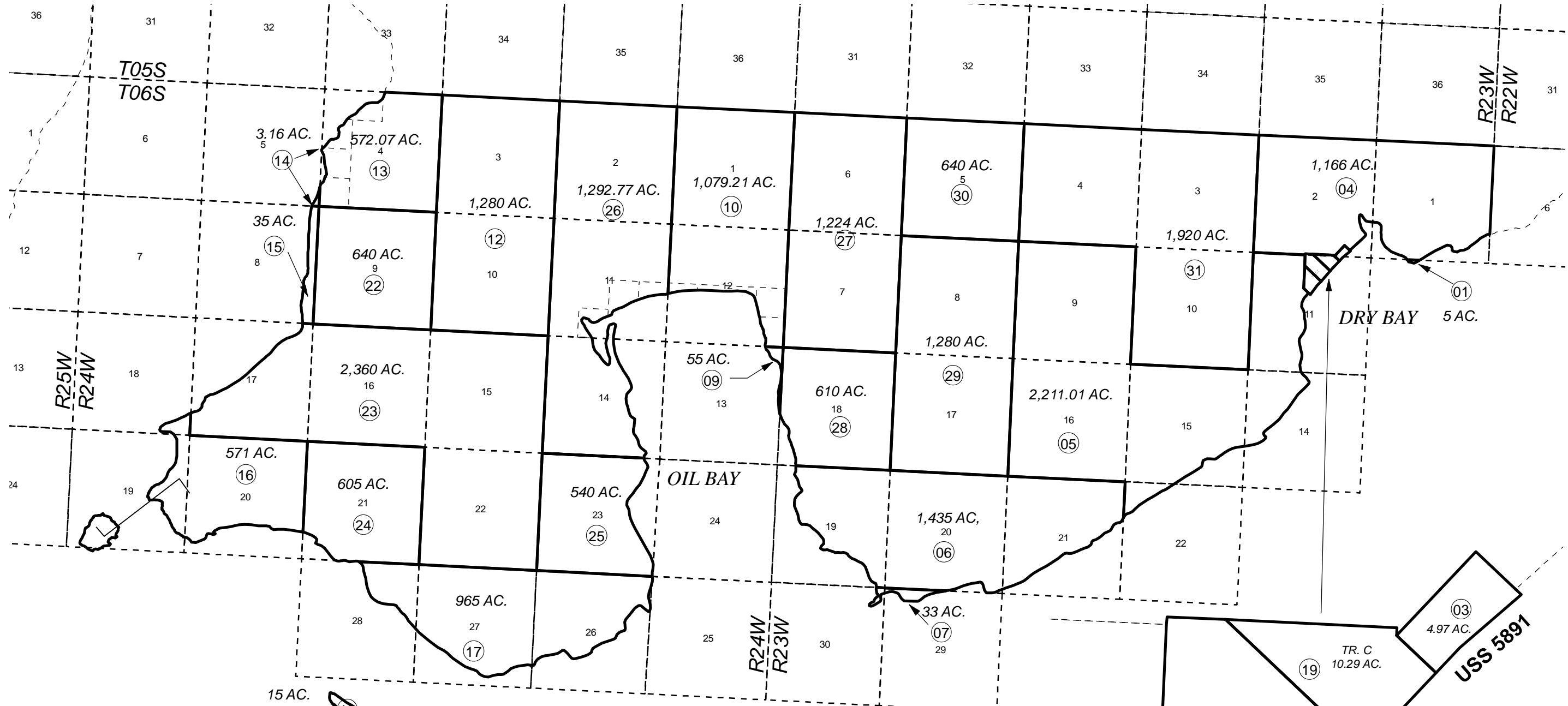


T06S, R23W, R24W, S.M.

231-150

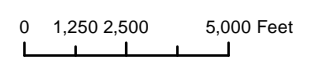


This map is prepared for Kenai Peninsula Borough Assessing Dept. use only and is not intended for conveyance nor is it a survey.

Note- Assessor's block Numbers Shown in Elipses Assessor's Parcel Numbers Shown in Circles

APRIL 4, 2013

For 2013 assessment roll		
Delete	Add	Revise
	To	
8,11	22-31	



Assessor's Map  
Kenai Peninsula Borough

102

US SURVEY 4854 TRACTS A B & C IL0880004