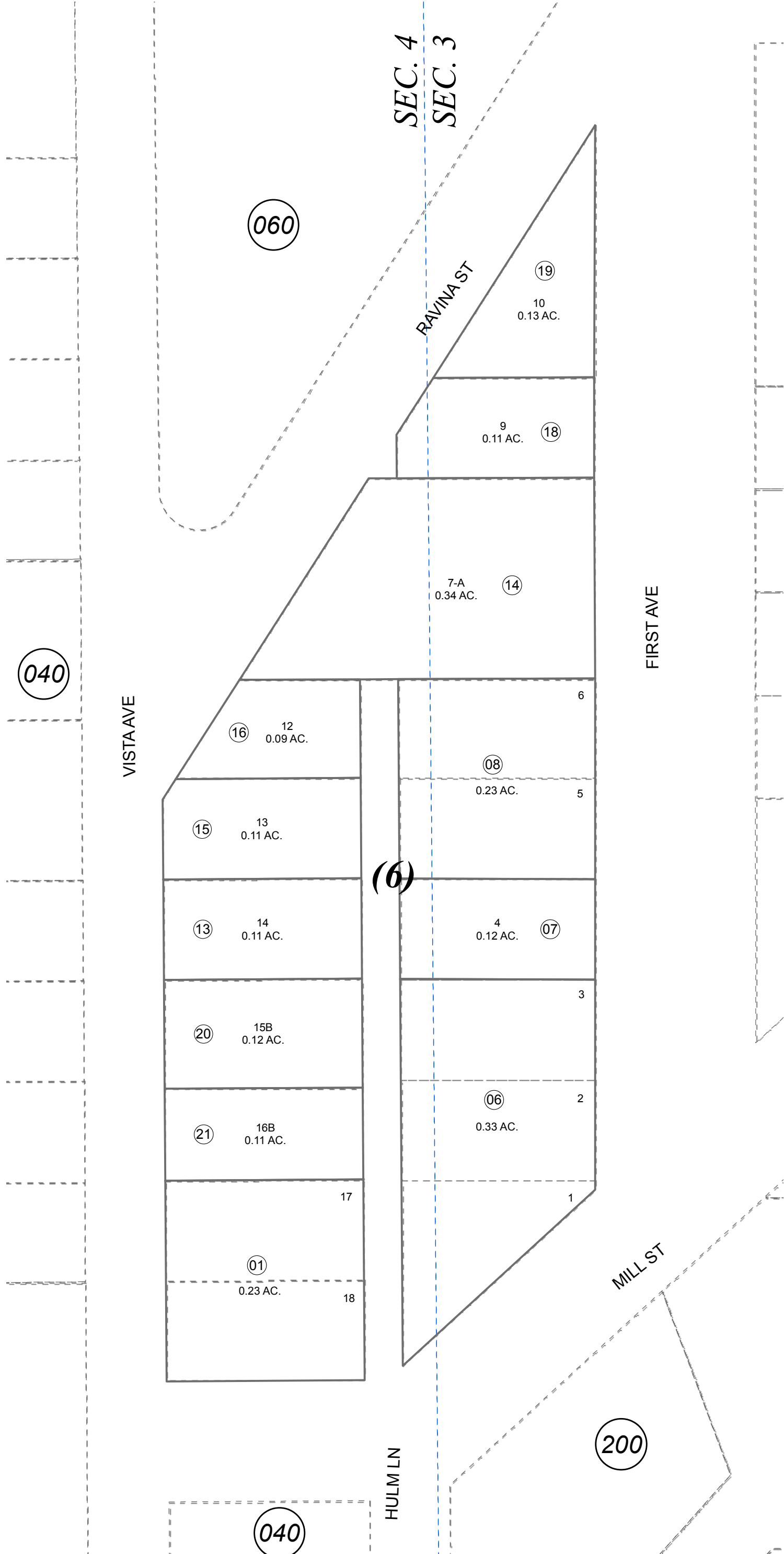


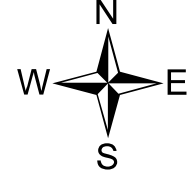
POR. SEC. 3 & 4, T01S, R01W, S.M.

147-050



JANUARY 4, 2019

For 2019 assessment roll	
Delete	Add
17	20,21



SEWARD TOWNSITE CLIFF ADDN SW00000003  
 O BRIEN SUB SW0840004  
 CLIFF ADDN THOMAS REPLAT SW0960010  
 CLIFF ADDN TO SEWARD TOWNSITE THOMAS REPLAT NO 2 SW2018017

Assessor's Map  
 Kenai Peninsula Borough

Note- Assessor's block Numbers Shown in Ellipses  
 Assessor's Parcel Numbers Shown in Circles

This map is prepared  
 for Kenai Peninsula  
 Borough Assessing Dept.  
 use only and is not  
 intended for conveyance  
 nor is it a survey.