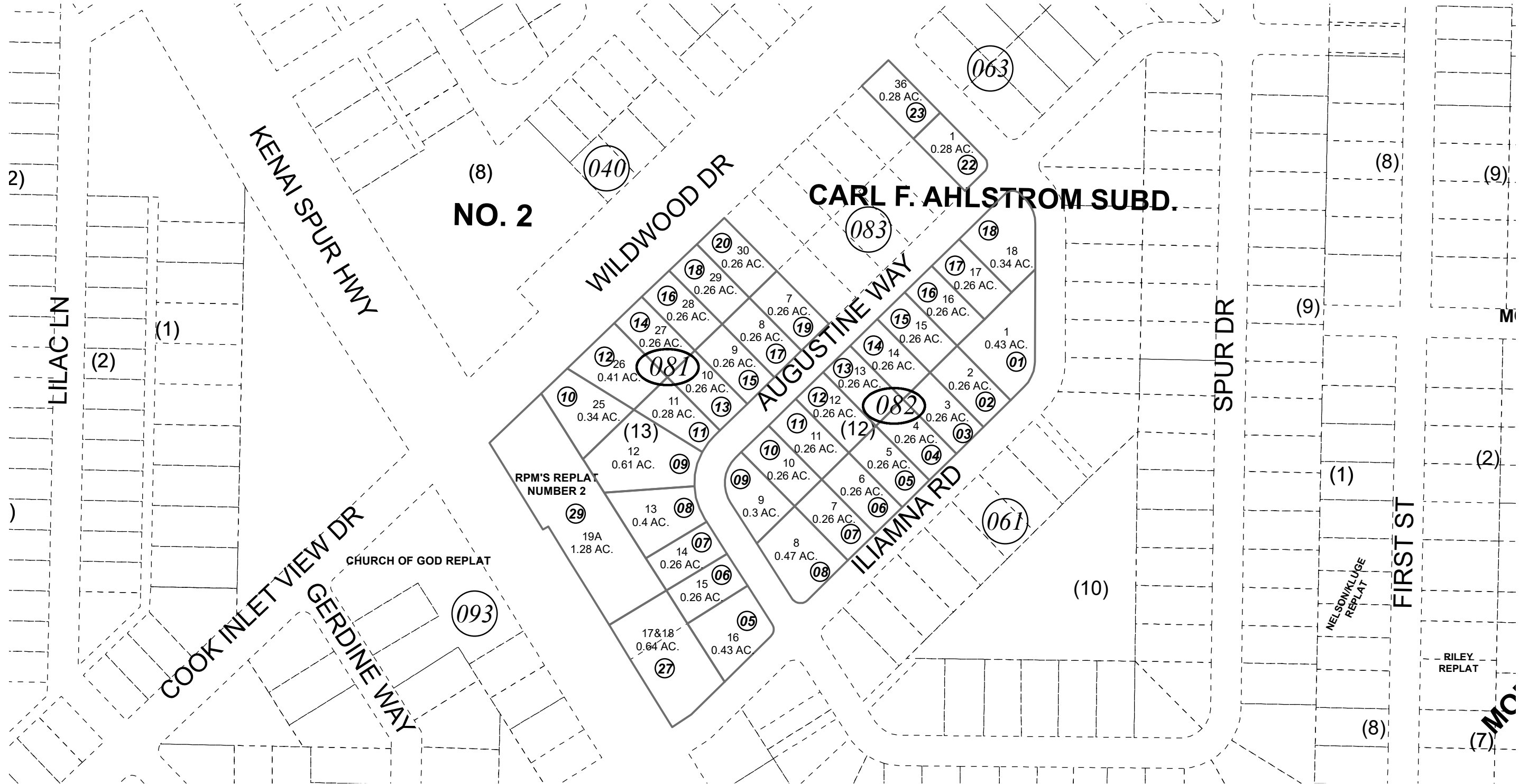
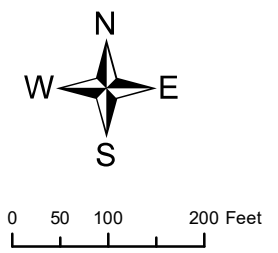


POR. SEC. 25, T06N, R12W, S.M.

039-080



OCTOBER 15, 2021



For 2021 assessment roll		
Delete	Add	Revise
	To	
08124,		
08125,		
08126,		
08128	08129	

Assessor's Map
Kenai Peninsula Borough

CARL F AHLSTROM SUB KN0000216
 CARL F AHLSTROM SUB RPM'S REPLAT KN2017066
 CARL F AHLSTROM SUB RPM'S REPLAT NUMBER 2 KN2021059

Note- Assessor's block Numbers Shown in Ellipses
 Assessor's Parcel Numbers Shown in Circles

This map is prepared for Kenai Peninsula Borough Assessing Dept. use only and is not intended for conveyance nor is it a survey.