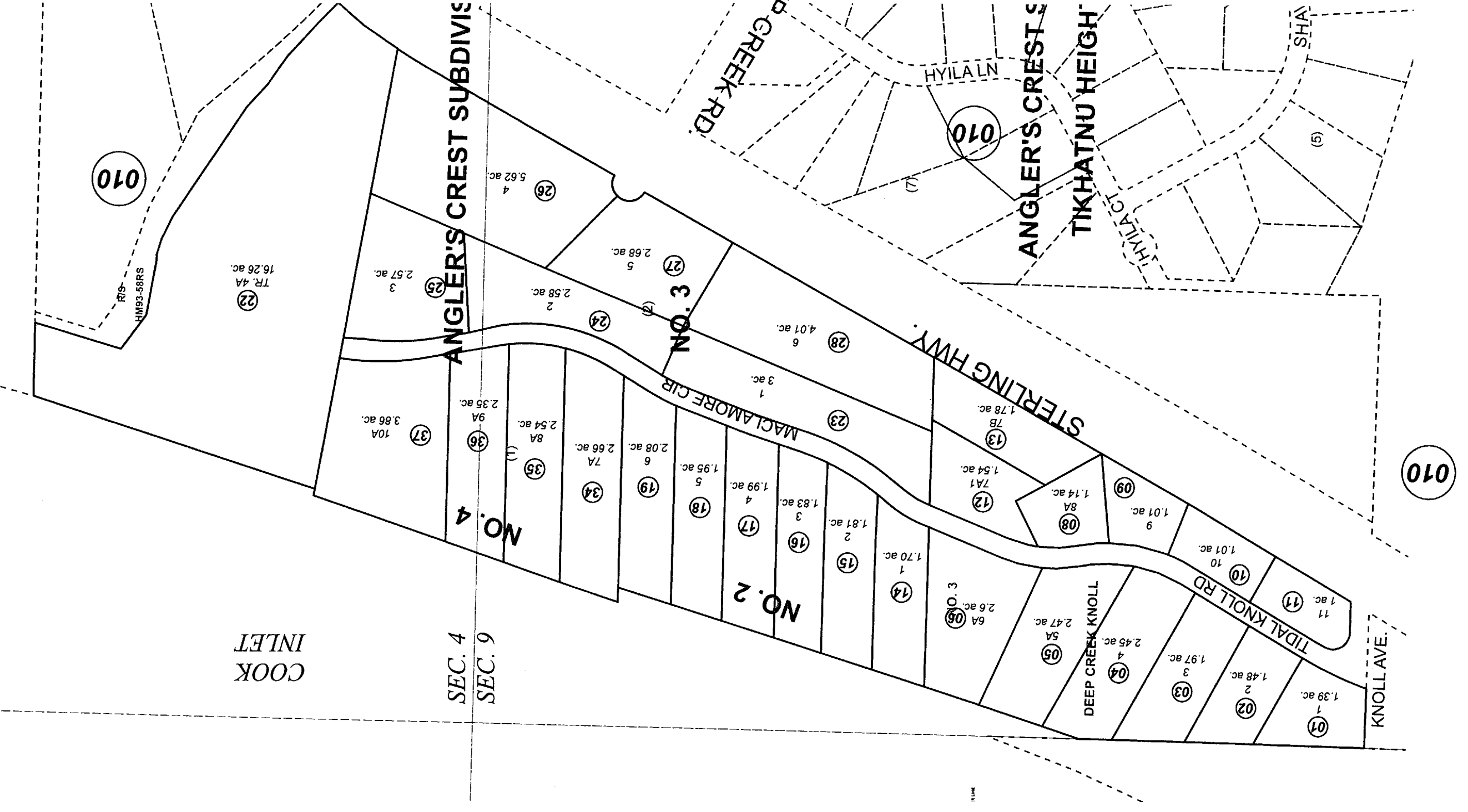


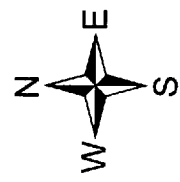
POR. SEC. 4 & SEC. 9, T02S, R14W, S.M.

159-011



For 2011 assessment roll		
Delete	Add	Revise
To		
29-33	34-37	

MAY 18, 2010



Assessor's Map
Kenai Peninsula Borough

DEEP CREEK KNOLL SUB AMENDED HM0850097
 DEEP CREEK KNOLL SUB NO 2 HM0860011
 DEEP CREEK KNOLL SUB NO 3 HM2008062
 ANGLER'S CREST SUB NO 2 HM2002056
 ANGLER'S CREST SUB NO 3 HM2008062
 ANGLER'S CREST SUB NO 4 HM2010012

Note- Assessor's block Numbers Shown in Ellipses
 Assessor's Parcel Numbers Shown in Circles

This map is prepared for Kenai Peninsula Borough Assessing Dept. use only and is not intended for conveyance nor is it a survey.