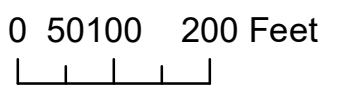
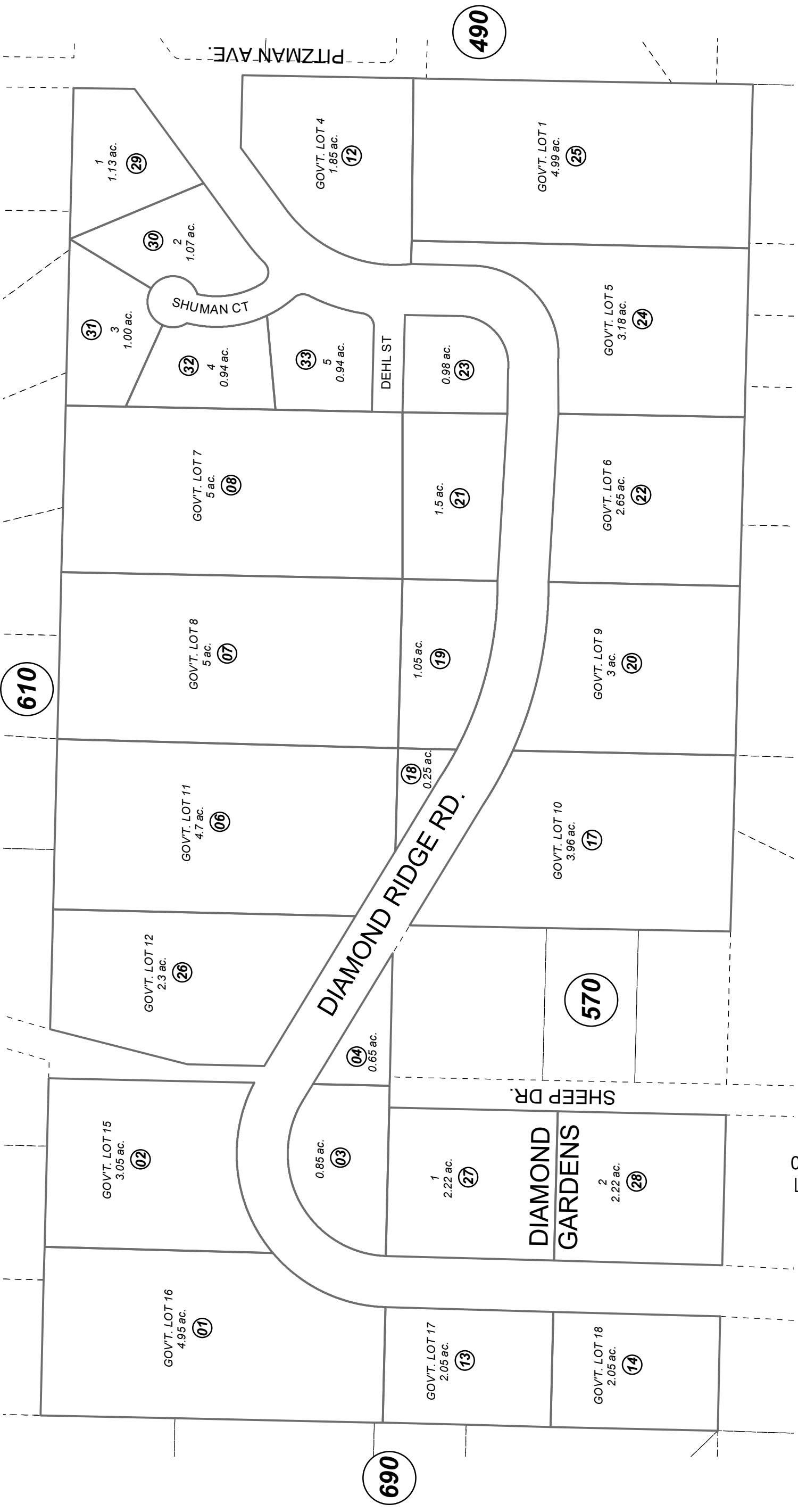


W1/2 SE1/4 SEC. 12, T06S, R14W, S.M.

173-040



AUGUST 7, 2023

For 2024 assessment roll	
Delete	Add
	Revise
To	
09-11	29-33

Assessor's Map
Kenai Peninsula Borough

DIAMOND GARDENS HM2001071
SPRUCE KNOLL HM2023019

Note- Assessor's block Numbers Shown in Ellipses
Assessor's Parcel Numbers Shown in Circles

This map is prepared
for Kenai Peninsula
Borough Assessing Dept.
use only and is not
intended for conveyance
nor is it a survey.