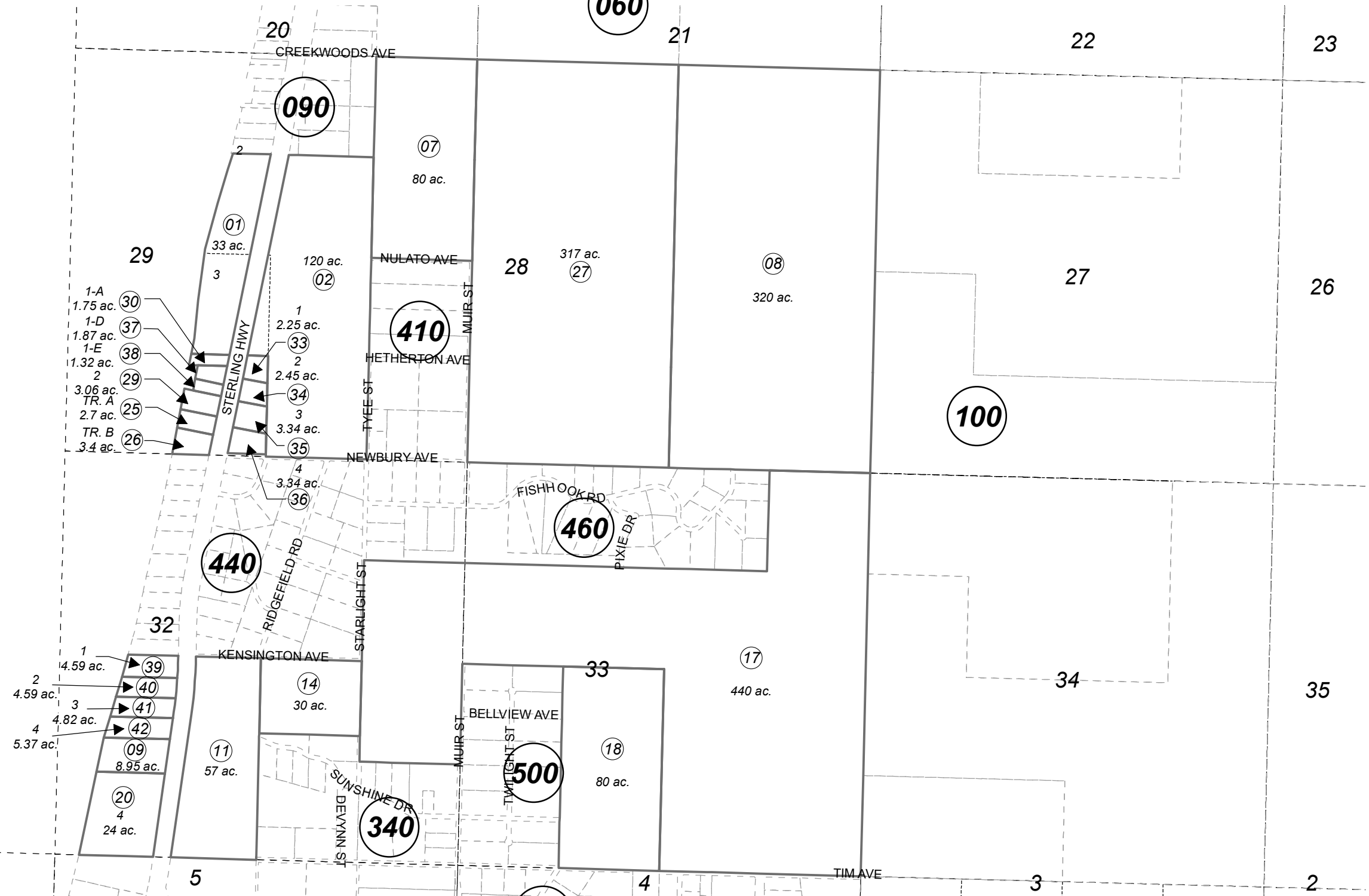


SEC. 28, 29, 32, 33, T02S, R14W, S.M.

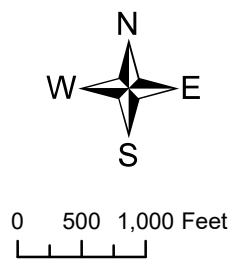
159-080

COOK
INLET



JUNE 20, 2023

For 2024 assessment roll		
Delete	Add	Revise
	To	
19	39-42	



Assessor's Map
Kenai Peninsula Borough

EMMA MCCUNE TRACTS SUB HM0780073
 MISTY ACRES SUB HM0820080
 MISTY ACRES SUB COYS ADDN HM0940033
 WHISPERING PINES HM2003046
 RECORD OF SURVEY HM2020009
 MISTY ACRES 2020 REPLAT HM2021012
 THE PEAKS SUB HM2023013

Note- Assessor's block Numbers Shown in Ellipses
 Assessor's Parcel Numbers Shown in Circles