

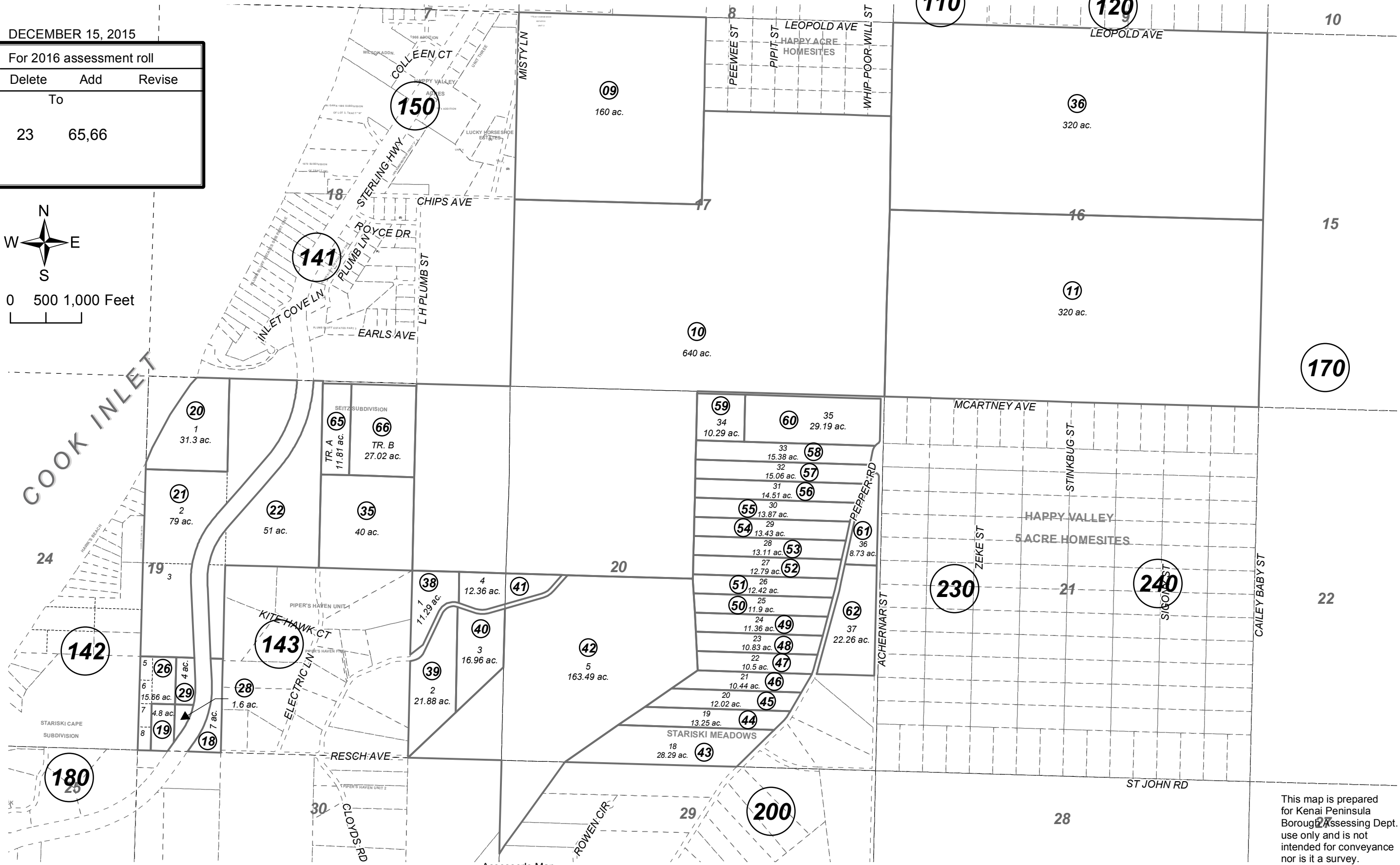
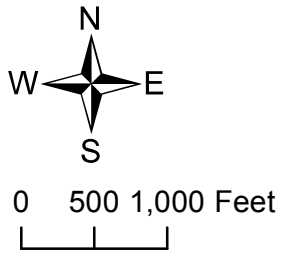
POR. SEC. 24, T03S, R15W & SEC. 16-21, T03S, R14W, S.M.

159-140

DECEMBER 15, 2015

For 2016 assessment roll

Delete	Add	Revise
To		
23	65,66	



Assessor's Map
Kenai Peninsula Borough

STARISKI MEADOWS HM0970062
SEITZ SUB HM2015030

This map is prepared for Kenai Peninsula Borough Assessing Dept. use only and is not intended for conveyance nor is it a survey.

Note- Assessor's block Numbers Shown in Ellipses
Assessor's Parcel Numbers Shown in Circles