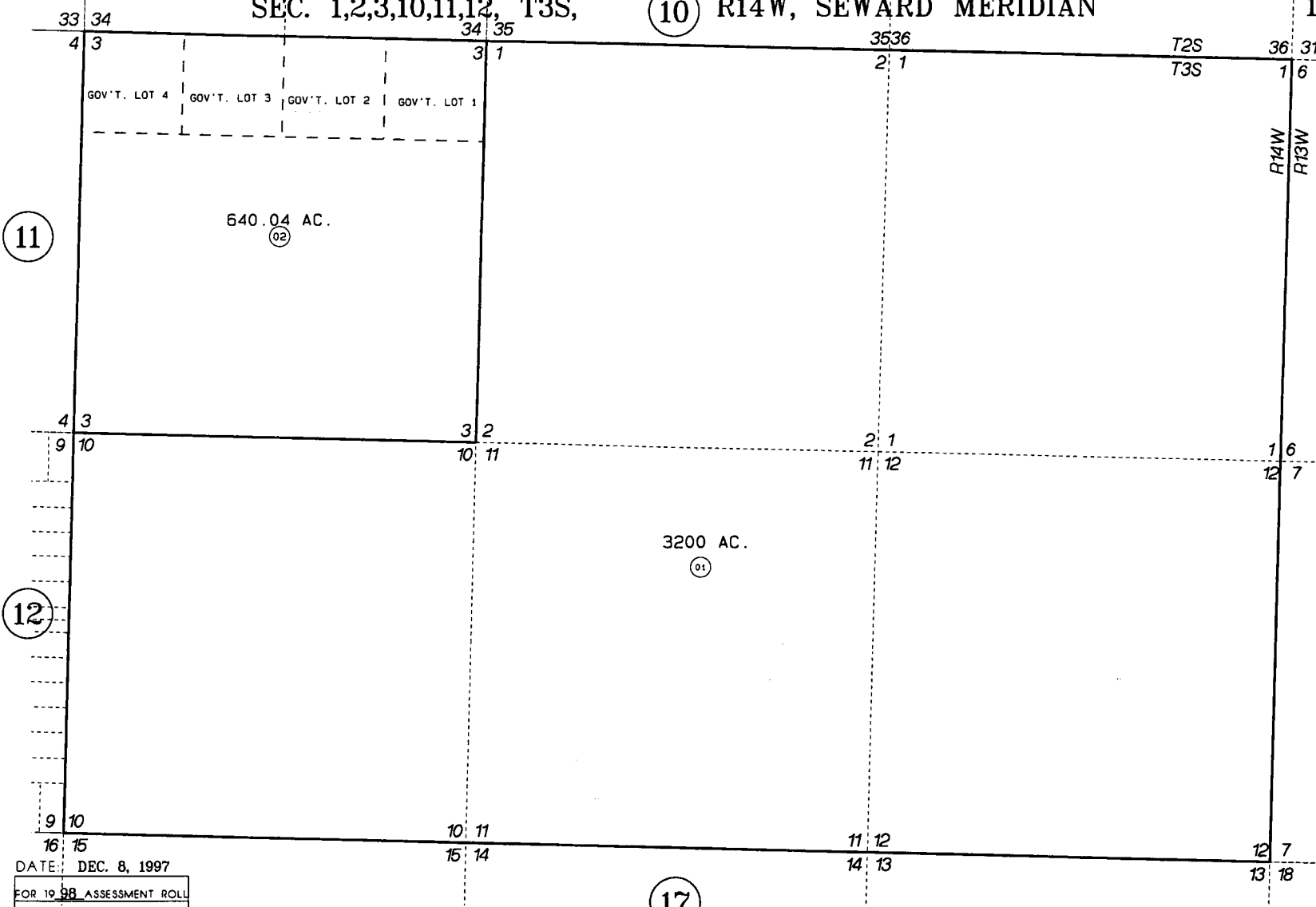


SEC. 1,2,3,10,11,12, T3S, (10) R14W, SEWARD MERIDIAN

159-130



BK
185

(11)

(12)

(17)

640.04 AC.
(02)

3200 AC.
(01)

DATE: DEC. 8, 1997
FOR 1998 ASSESSMENT ROLL
DELETE ADD REVISED
TO
REPLACEMENT
PAGE

Assessor's Map
Kenai Peninsula Borough

THIS MAP IS PREPARED
FOR KENAI PENINSULA
BOROUGH ASSESSING DEPT.
USE ONLY AND IS NOT
INTENDED FOR ANY
OTHER USE OR REPRESENTATION

NOTE - Assessor's Block Numbers Shown in Ellipses
Assessor's Parcel Numbers Shown in Circles

