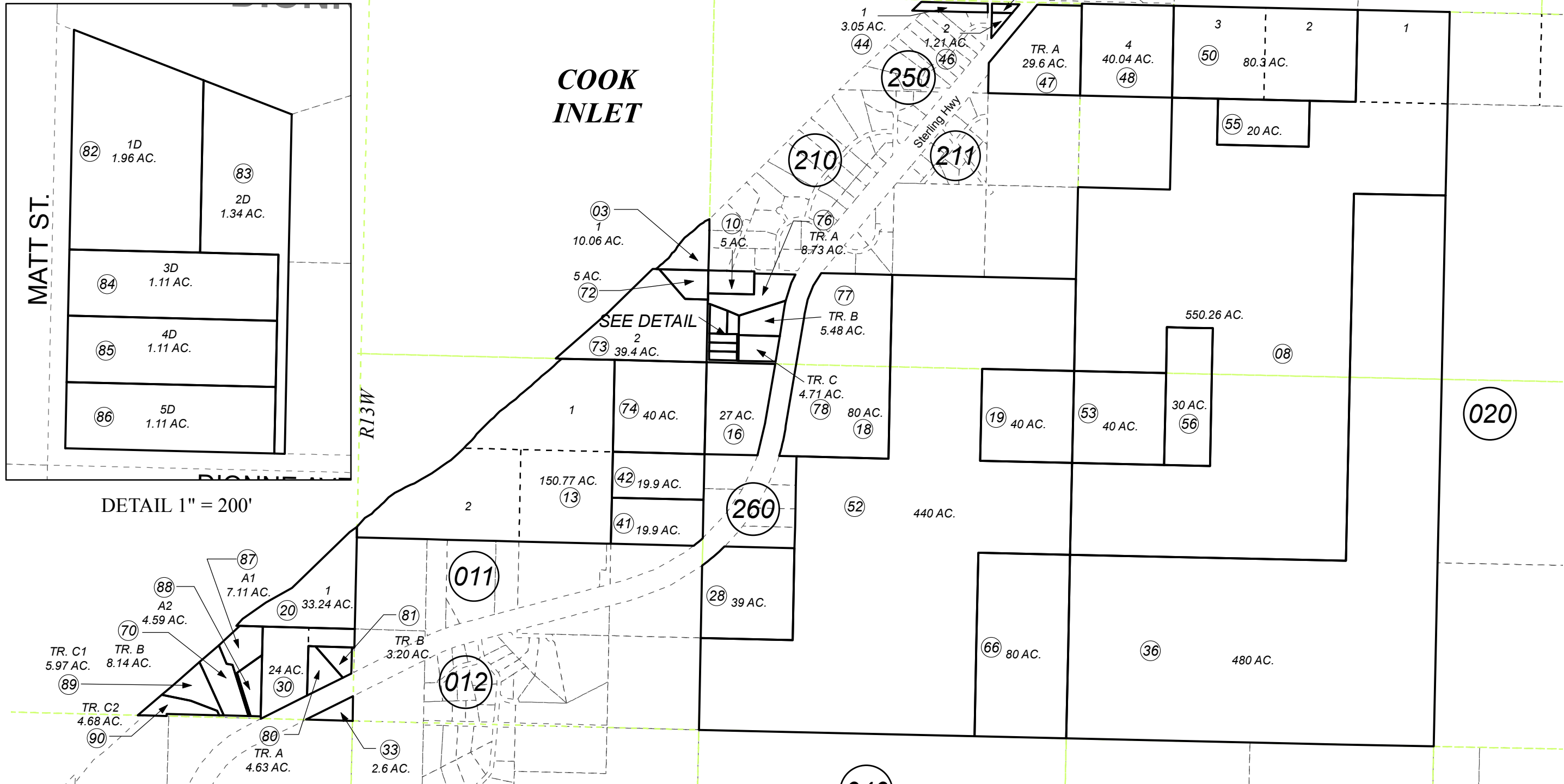


SEC. 12, T01S, R14W & SEC. 4-9, T01S, R13W, S.M.

**BK**  
**139**

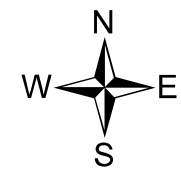
157-010



DETAIL 1" = 200'

JUNE 30, 2017

For 2018 assessment roll		
Delete	Add	Revise
To		
71	89,90	



1 inch = 1,500 feet

Assessor's Map  
Kenai Peninsula Borough

WINDELER SUB □ HM0741526  
 EAGLES REST □ HM0980003  
 DIONNE SUB □ HM2000006  
 NINILCHIK POINT SUB □ HM2004103  
 DIONNE SUB LYNX ADDN HM2005022  
 EAGLES REST #2 HM2005052  
 EAGLES REST #3 HM2017009

Note- Assessor's block Numbers Shown in Elipses  
 Assessor's Parcel Numbers Shown in Circles