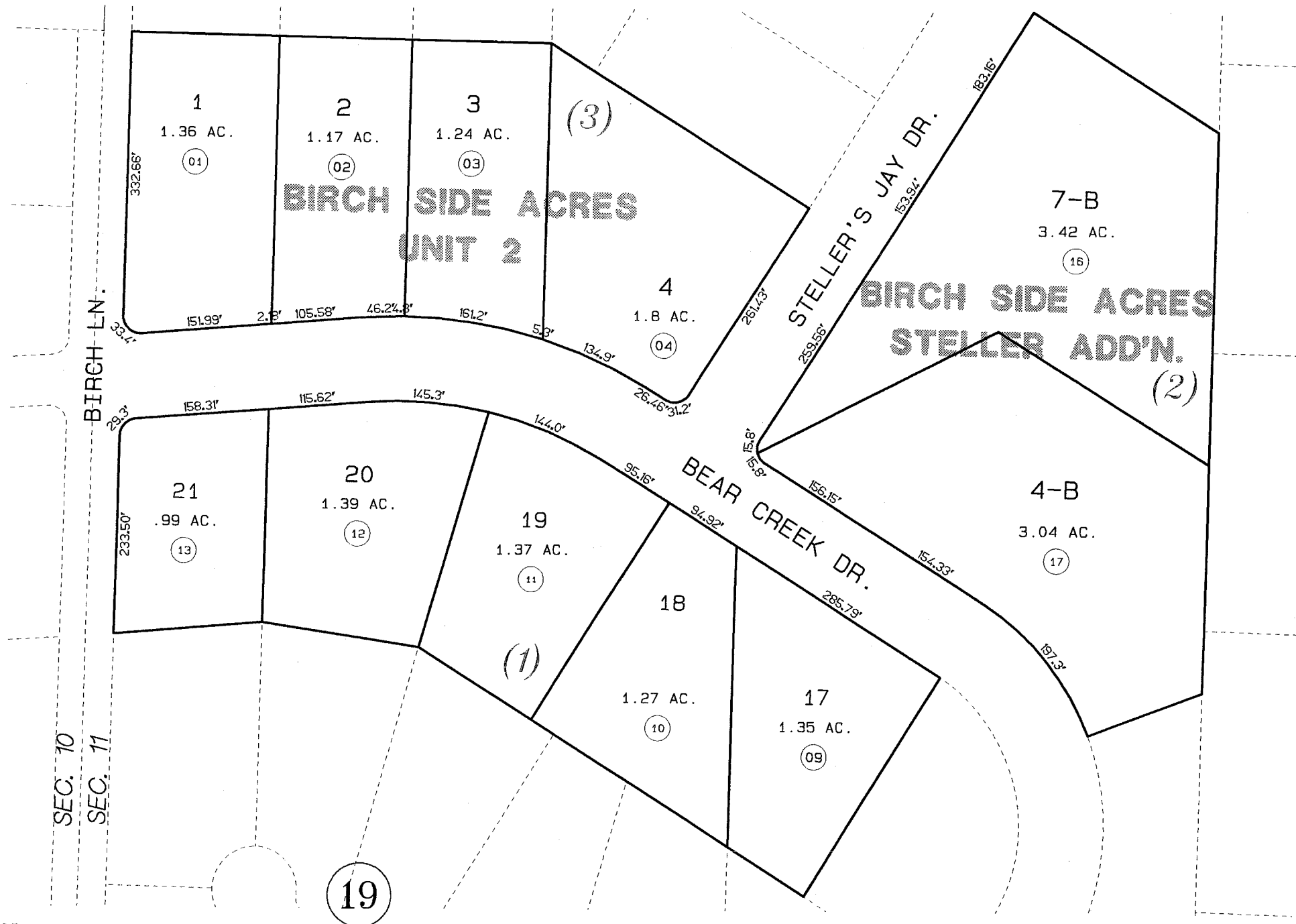


16



12

6



DATE: OCT. 25, 1995

FOR 19 96 ASSESSMENT ROLL		
DELETE	ADD	REVISED
TO		
6,14,15	16,17	

Assessor's Map
Kenai Peninsula Borough

BIRCH SIDE ACRES UNIT 2 HM71-1237
 BIRCH SIDE ACRES MIKE LOCKWOOD REPLAT HM89-09
 BIRCH SIDE ACRES UNIT 2 REPLAT LOTS 4 & 5 BLK. 2 HM89-11
 BIRCH SIDE ACRES UNIT STELLER ADDN. HM950026

THIS MAP IS PREPARED
 FOR KENAI PENINSULA
 BOROUGH ASSESSING DEPT.
 USE ONLY AND IS NOT
 INTENDED FOR ANY
 OTHER USE OR REPRESENTATION

NOTE - Assessor's Block Numbers Shown In Ellipses
 Assessor's Parcel Numbers Shown In Circles