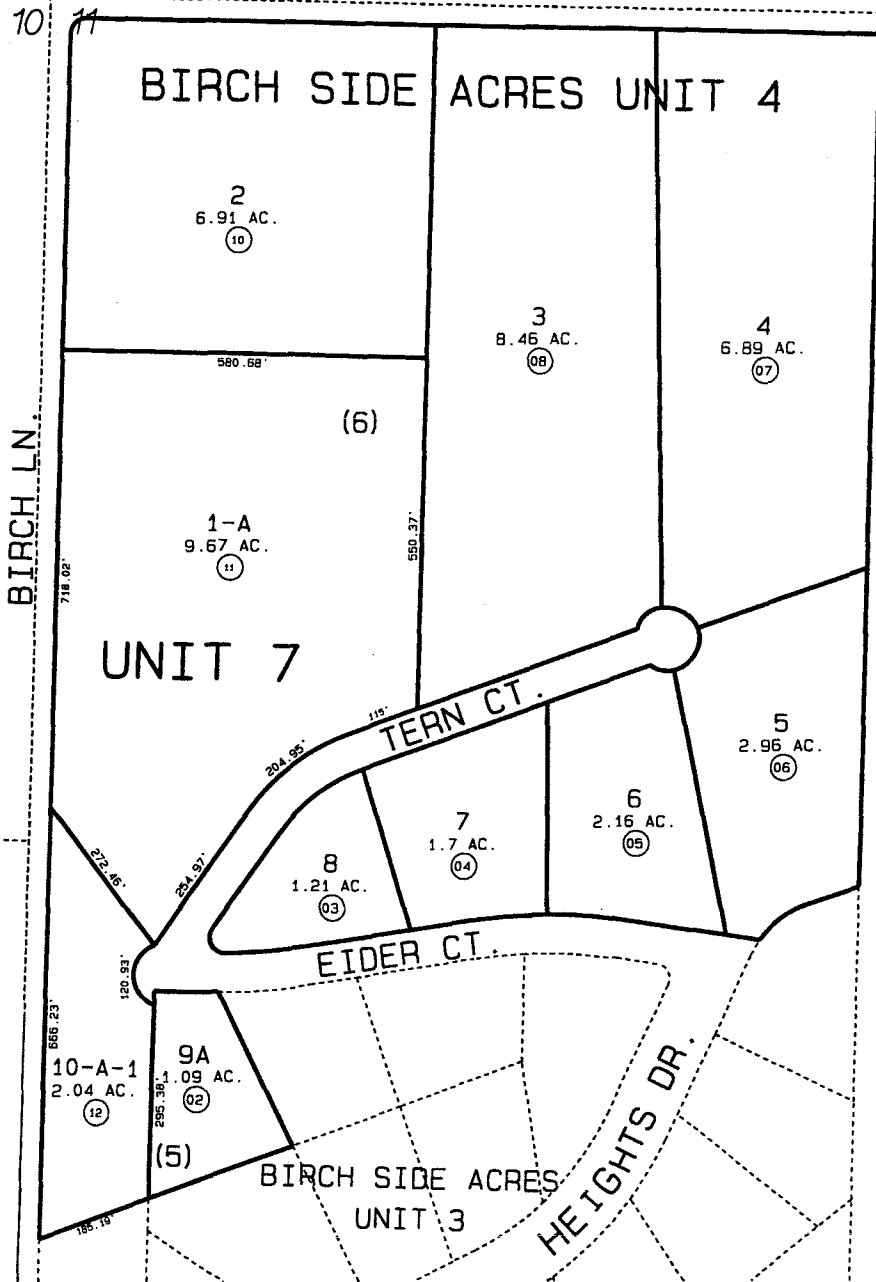


6

3:2 (RES SN9702) PLUNGING WAY



6

6

17



DATE: JAN. 12, 1999

FOR 1999 ASSESSMENT ROLL

DELETE	ADD	REVISED

TO

1,9	11,12
-----	-------

Assessor's Map
Kenai Peninsula Borough

HM830083 BIRCH SIDE ACRES SUB UNIT 4 AMENDED
HM980071 BIRCH SIDE ACRES SUB UNIT 7

THIS MAP IS PREPARED FOR KENAI PENINSULA BOROUGH ASSESSING DEPT. USE ONLY AND IS NOT INTENDED FOR ANY OTHER USE OR REPRESENTATION
NOTE - Assessor's Block Numbers Shown In Ellipses
Assessor's Parcel Numbers Shown In Circles