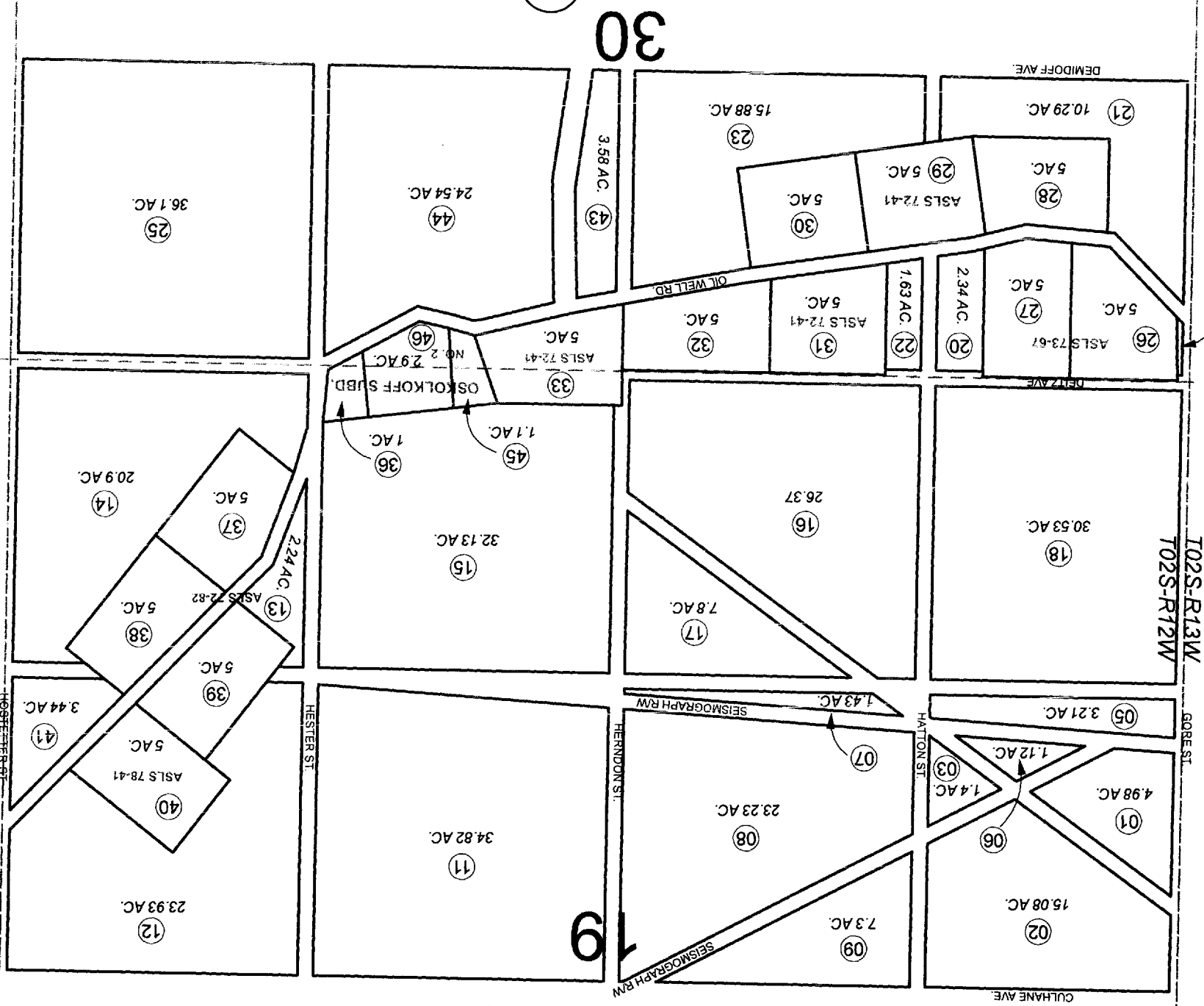


S 1/2 SEC. 19 & N 1/4 SEC. 30, T02S, R12W, S.M.

185-485

484



056

487

506

486

For 2011 assessment roll		
Delete	Add	Revise
01-03,	05-09,	11-18,
20-23,	41-44	(ACREAGE CHANGE)



JANUARY 25, 2011

Assessor's Map  
Kenai Peninsula Borough

ASLS 72-41 HM0730481  
 ASLS 72-82 HM0730483  
 ASLS 73-67 HM0740801  
 ASLS 78-41 HM0790067  
 OSKOLKOFF SUB HM0840109  
 OSKOLKOFF SUB NO 2 HM0920043

This map is prepared for Kenai Peninsula Borough Assessing Dept. use only and is not intended for conveyance nor is it a survey. Note- Assessor's block Numbers Shown in Ellipses and Parcel Numbers Shown in Circles