

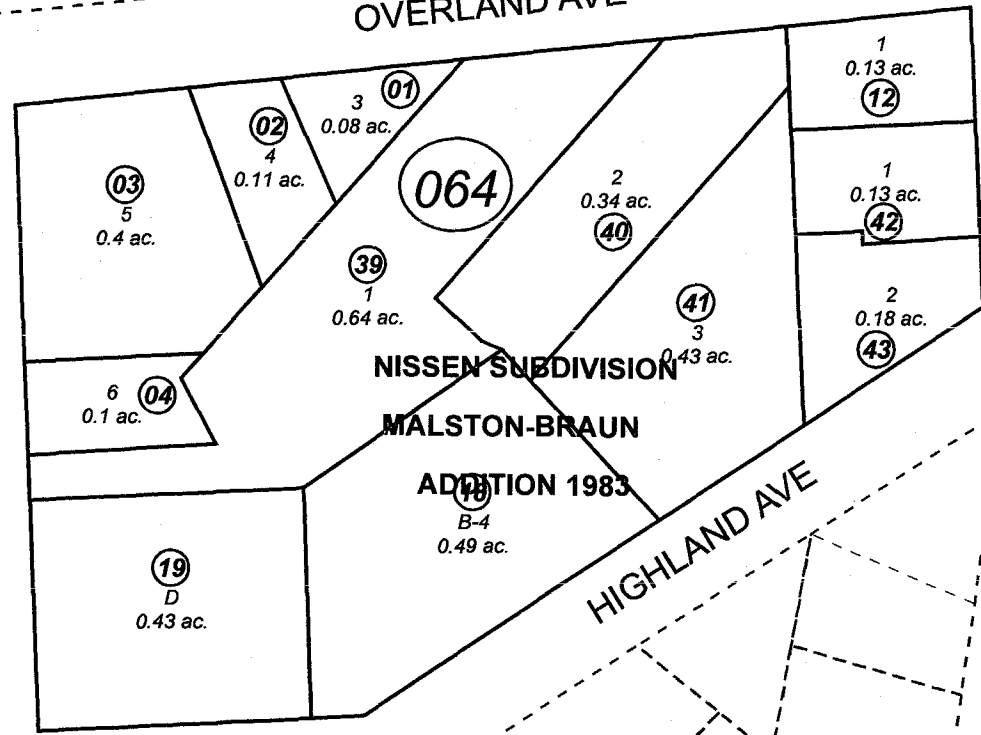
# NO. 8

## BOOKEY'S REPLAT

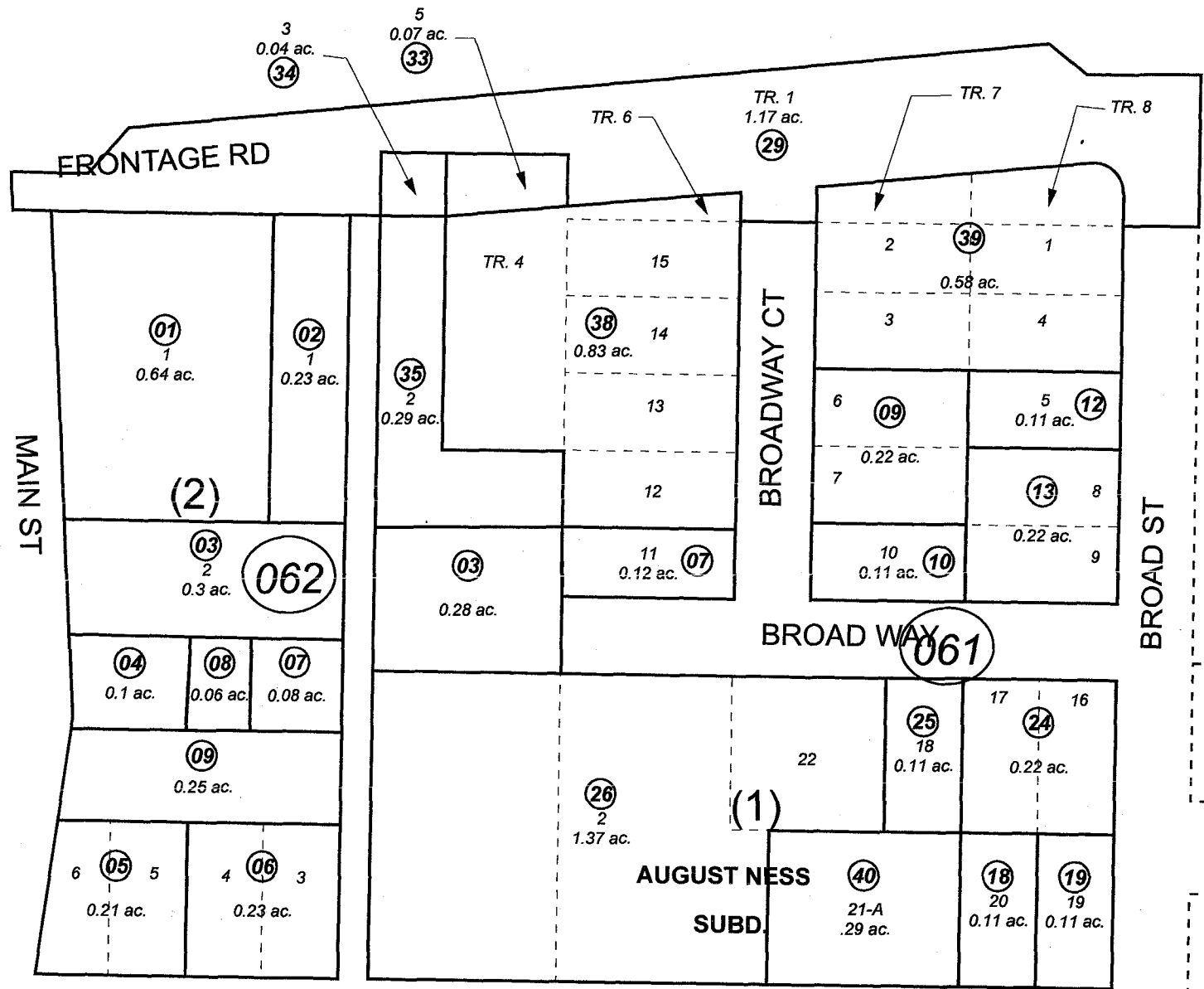
(3) 160

OVERLAND AVE

UPLAND ST



HIGHLAND WAY  
(16) 090



PENINSULA AVE

100



JUNE 8, 2007

For 2008 assessment roll		
Delete	Add	Revise
To		
047063	047160+	

Assessor's Map  
Kenai Peninsula Borough

AUGUST NESS SUB □ KN0001499  
 ORIGINAL TOWNSITE OF KENAI □ KN0002970  
 FRONTAGE ROAD SUB □ KN0810058  
 NISSEN SUB MALSTON-BRAUN ADDN 1983 □ KN0830099  
 ORIGINAL TOWNSITE OF KENAI RAINBOW ADDN □ KN0990076  
 ORIGINAL TOWNSITE OF KENAI MEEKS REPLAT □ KN2001060

This map is prepared for Kenai Peninsula Borough Assessing Dept. use only and is not intended for conveyance nor is it a survey.  
 Note- Assessor's block Numbers Shown in Ellipses  
 Assessor's Parcel Numbers Shown in Circles