

E1/2 SE1/4 SEC. 30, T05N, R08W, S.M.

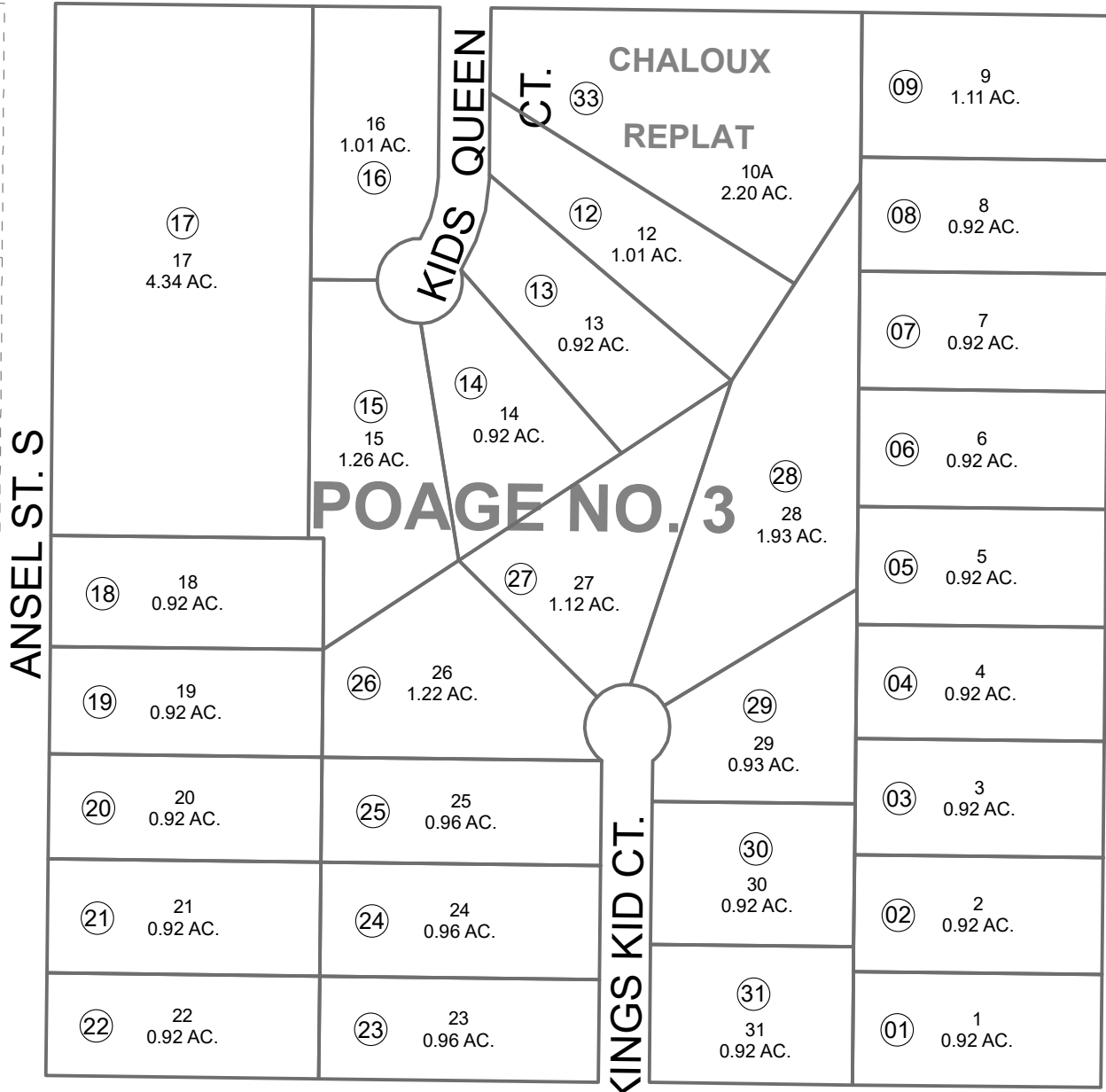
066-431

LANDRY ADDN.

114

This map is prepared for Kenai Peninsula Borough Assessing Dept. use only and is not intended for conveyance nor is it a survey.

Note- Assessor's block Numbers Shown in Ellipses Assessor's Parcel Numbers Shown in Circles



ANSEL ST. S

LAKE RD.

111

430

ANSEL ST. S

320



0 50 100 200 Feet

DECEMBER 6, 2021

For 2022 assessment roll	
Delete	Add
	Revise
To	
10,11	33

30 29
31 32

Assessor's Map Kenai Peninsula Borough POAGE SUB NO 3 KN0860052 POAGE SUB CHALOUX REPLAT KN2021082