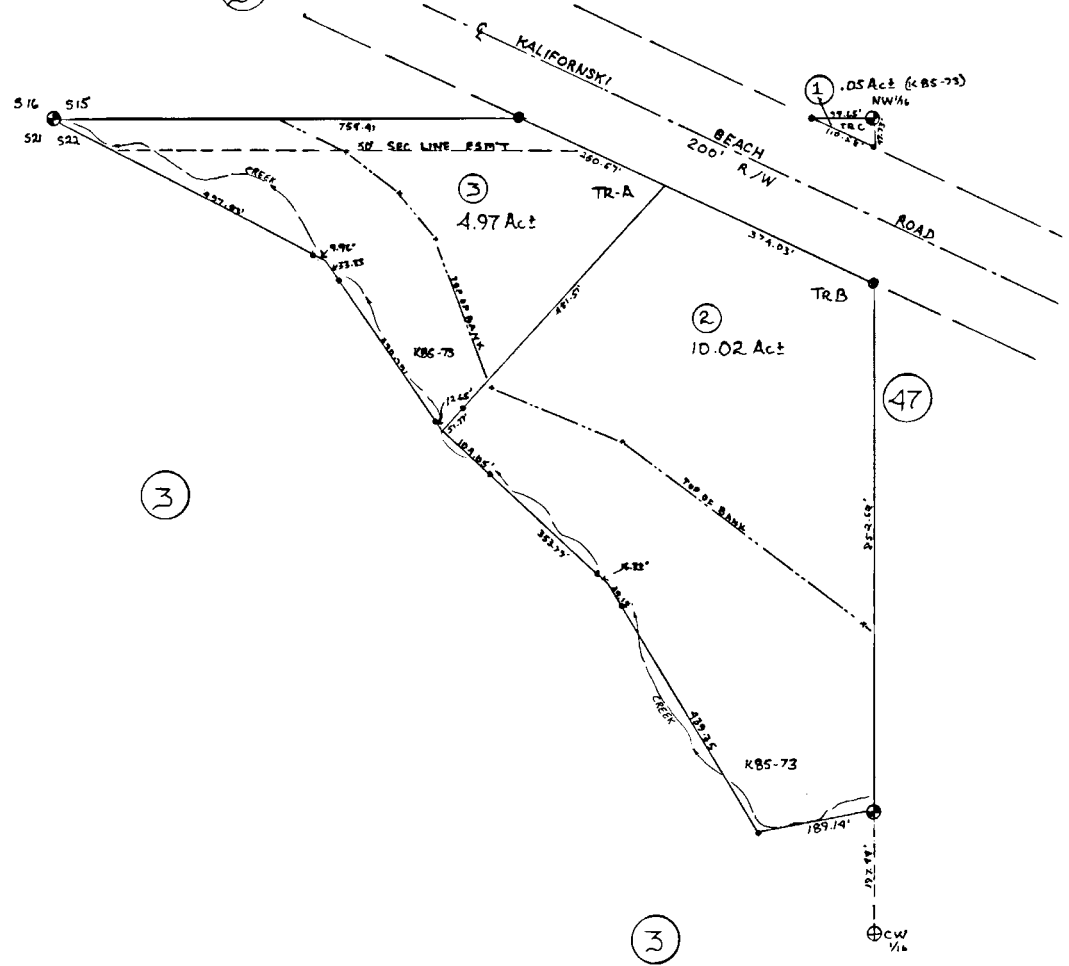


PTN W 1/2 W 1/2 Sec 22

T5N R11W

055-471



KENAI PENINSULA BOROUGH AQUACULTURE SUB K85-73

Assessor's Map

Kenai Peninsula Borough, Alaska

NOTE - Assessor's Block Numbers Shown in Ellipses
Assessor's Parcel Numbers Shown in Circles