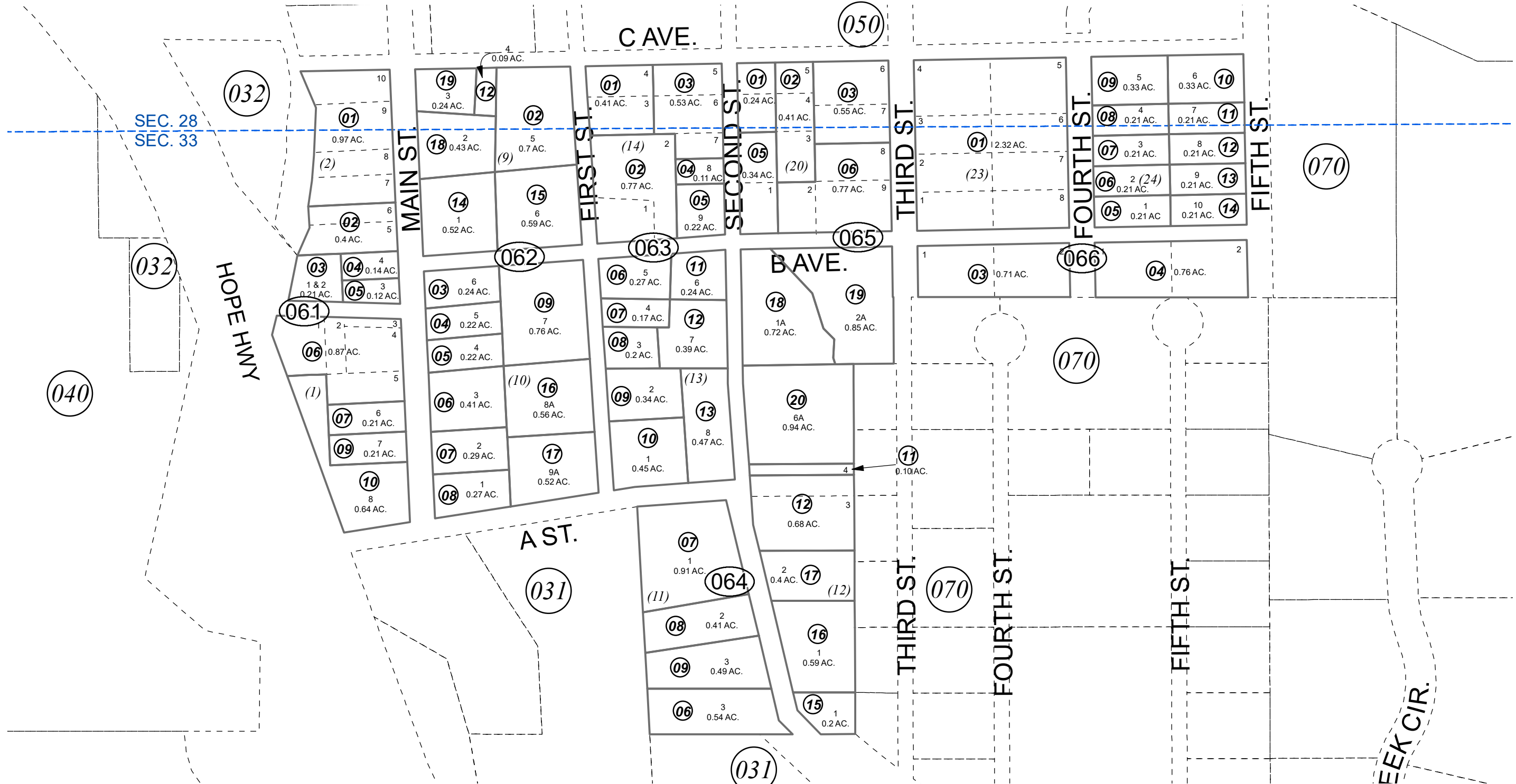


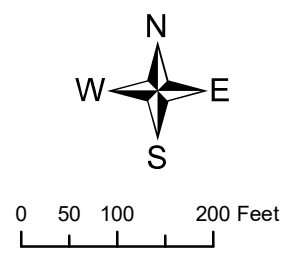
POR. SEC. 28 & SEC. 33, T10N, R02W, S.M.

035-060



FEBRUARY 1, 2022

For 2022 assessment roll		
Delete	Add	Revise
	To	
06602	06605-06614	



Assessor's Map
Kenai Peninsula Borough

SW0000012 HOPE TOWNSITE ALASKA SURVEY NO 1485
 SW0940015 HOPE TOWNSITE LOTS 1 - 3 BLOCK 11
 SW0980029 HOPE TOWNSITE HANSON REPLAT
 SW2018016 HOPE TOWNSITE 2017 ADDN

This map is prepared for Kenai Peninsula Borough Assessing Dept. use only and is not intended for conveyance nor is it a survey.
 Note- Assessor's block Numbers Shown in Ellipses
 Assessor's Parcel Numbers Shown in Circles