

NE1/4 SEC. 26, T05N, R09W, S.M.

066-050

260

FUNNY RIVER RD.

23 24
26 25

LEANN AVE.

LE

TR. H
9.64 ac.
08

TR. G
9.64 ac.
07

TR. F
9.64 ac.
06

TR. E
9.64 ac.
05

TR. D
9.64 ac.
04

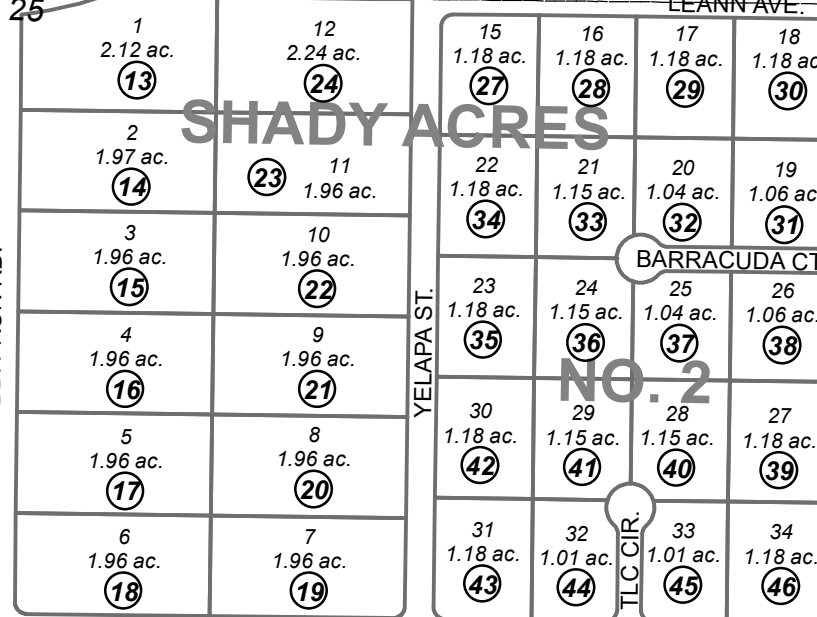
TR. C
9.64 ac.
03

TR. B
9.64 ac.
02

TR. A
8.18 ac.
01

CASA LA MONTANA SUBDIVISION

040



SHADY ACRES

NO. 2

47
14A
5.9 ac.

48
14B
5.9 ac.

49
14C
5.9 ac.

50
14D
5.9 ac.

TR. 2
1.74 ac.
11

CASA LA MONTANA
ADDITION NO. 2

67.00 ac.
12

CASA LA MONTANA
SUBDIVISION
ADDITION NO. 1
TR. 1
9.54 ac.
10

ASHLEY AVE.

KANAK AVE.

040

20

FEBRUARY 22, 2022

For 2022 assessment roll

Delete Add Revise

To

26 47-50



0 100 200 400 Feet

Assessor's Map
Kenai Peninsula Borough

CASA LA MONTANA SUB KN0740040
CASA LA MONTANA SUB ADDN NO 1 KN0770175
CASA LA MONTANA SUB ADDN NO 2 KN2003028
SHADY ACRES KN2003100
SHADY ACRES NO 2 KN2007112
PLAT WAIVER KPB RESOLUTION 2021-36

This map is prepared
for Kenai Peninsula
Borough Assessing Dept.
use only and is not
intended for conveyance
nor is it a survey.

Note- Assessor's block Numbers Shown in Elipses
Assessor's Parcel Numbers Shown in Circles