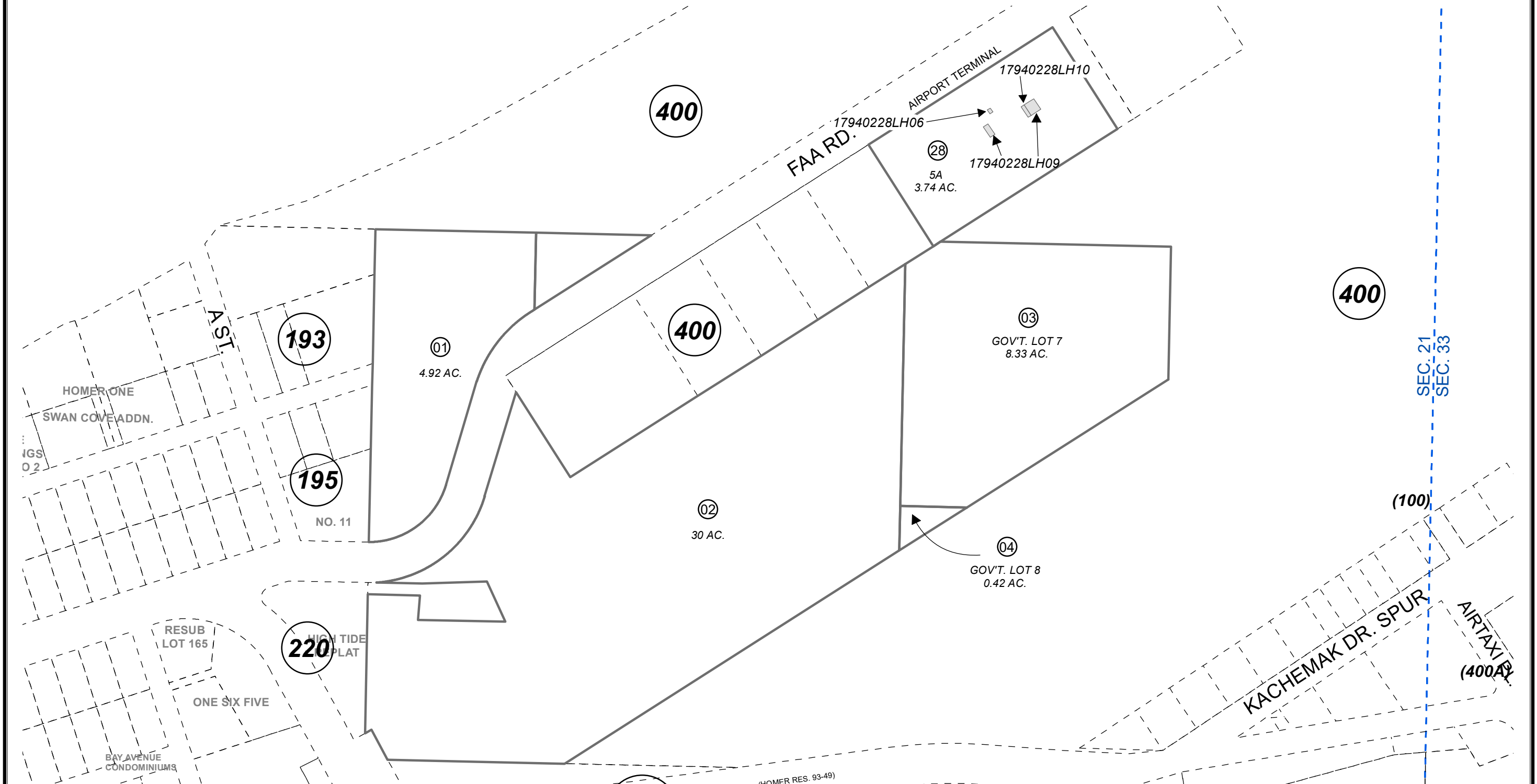


POR. SEC. 21, T06S, R13W, S.M.

179-402



MAY 19, 2023

For 2024 assessment roll		
Delete	Add	Revise
To		
28LH10		

Assessor's Map
Kenai Peninsula Borough

HOMER AIRPORT TERMINAL SPACE
LEASE PARCELS RESIDE ON PARCEL
NO. 179-402-28

This map is prepared for Kenai Peninsula Borough Assessing Dept. use only and is not intended for conveyance nor is it a survey.
Note- Assessor's block Numbers Shown in Elipses
Assessor's Parcel Numbers Shown in Circles

