

POR. SEC. 22 & 27, T03N, R12W, S.M.

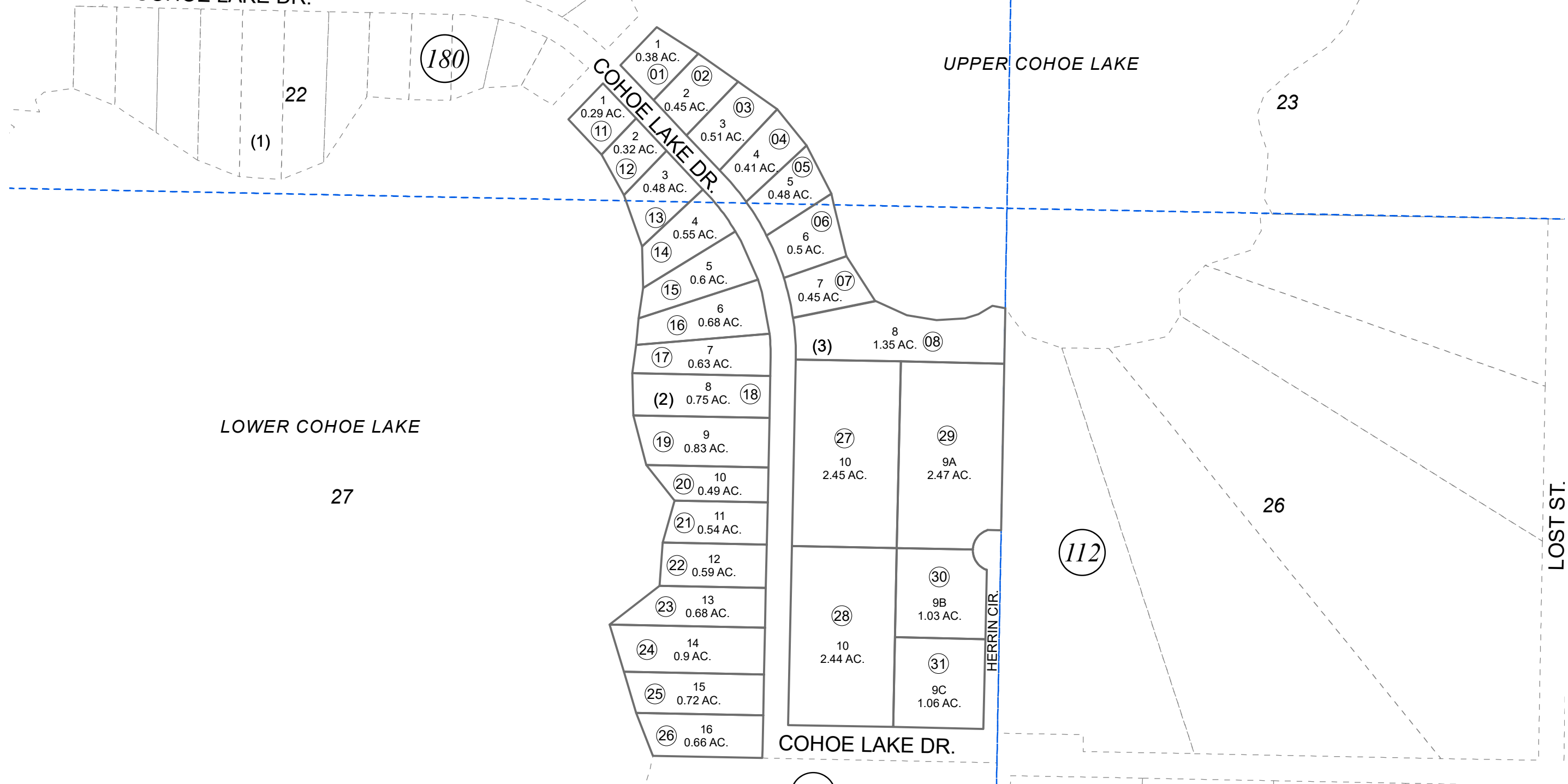
133-190

COHOE LAKE DR.

UPPER COHOE LAKE

LOWER COHOE LAKE

LOST ST.



0 50 100 200 Feet

DECEMBER 31, 2020

For 2021 assessment roll		
Delete	Add	Revise
To		
09	29-31	

Assessor's Map  
Kenai Peninsula Borough

COHOE LAKES SUB KN0001430  
COHOE LAKES SUB 2020 ADDN KN2020083

This map is prepared for Kenai Peninsula Borough Assessing Dept. use only and is not intended for conveyance nor is it a survey.  
Note- Assessor's block Numbers Shown in Elipses  
Assessor's Parcel Numbers Shown in Circles