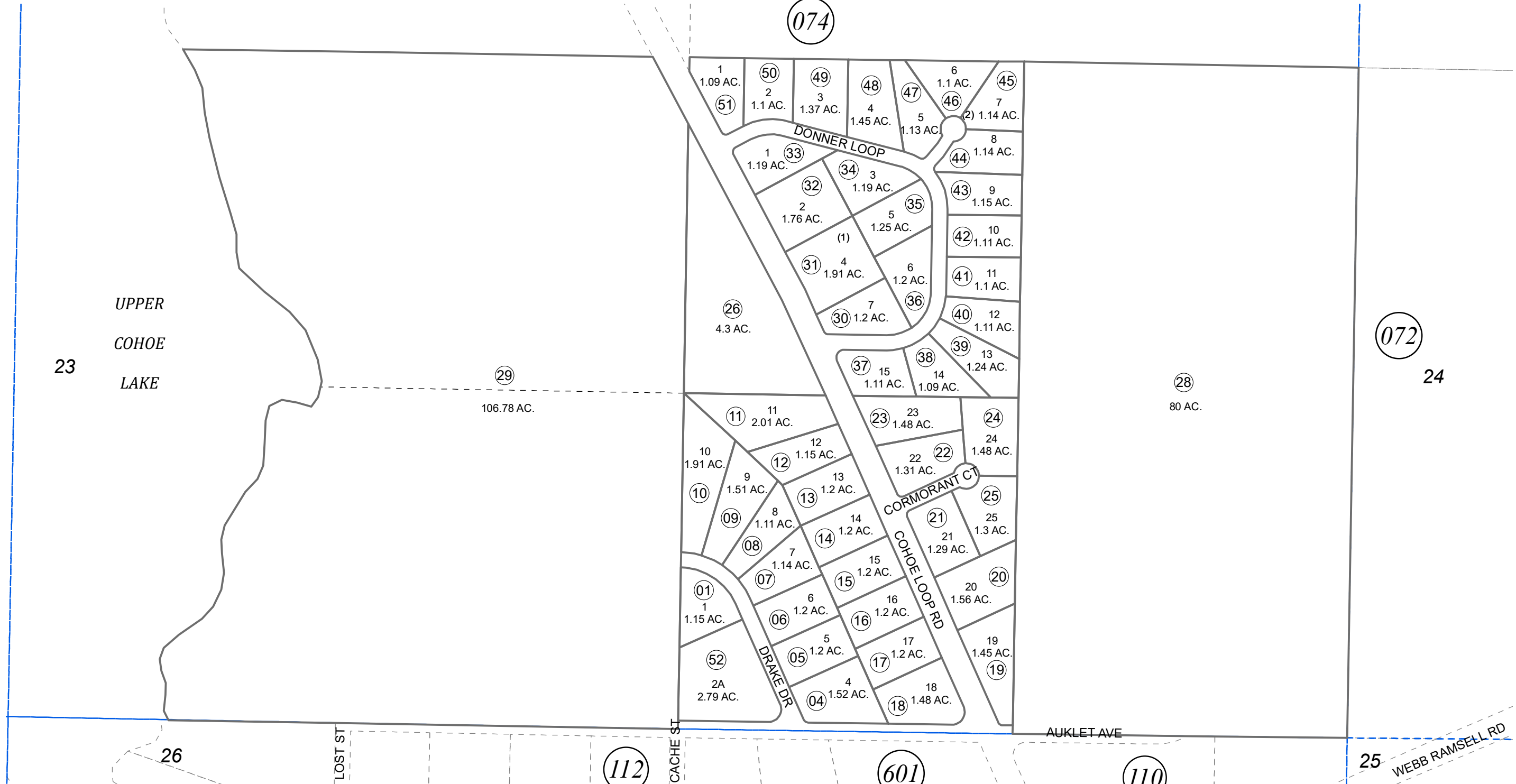


S 1/2 SEC. 23, T03N, R12W, S.M.

133-073



0 100 200 400 Feet

NOVEMBER 18, 2021

For 2022 assessment roll		
Delete	Add	Revise
To		
02,03	52	

Assessor's Map
Kenai Peninsula Borough

EAST COHOE SUB KN0840238
 BROWNS COHOE ACRES SUB KN0860017
 EAST COHOE SUB HEDGER REPLAT KN2021074

Note- Assessor's block Numbers Shown in Ellipses
 Assessor's Parcel Numbers Shown in Circles

This map is prepared for Kenai Peninsula Borough Assessing Dept. use only and is not intended for conveyance nor is it a survey.