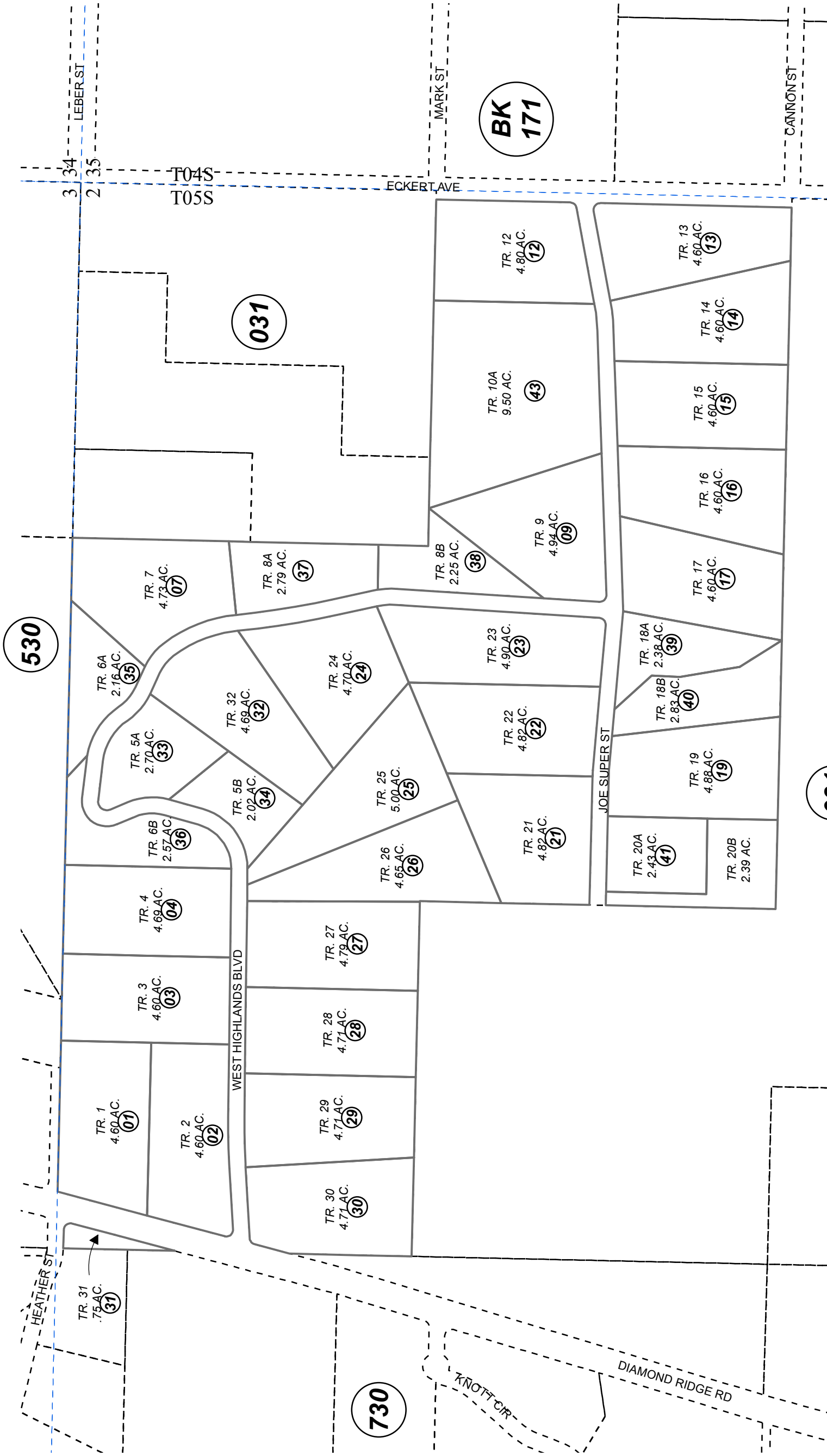


POR. SEC. 2, T06S, R14W, S.M.

173-035



SEPTEMBER 30, 2022

For 2023 assessment roll	
Delete	Add
	10,11
To	43

0 200 400 Feet



This map is prepared for Kenai Peninsula Borough Assessing Dept. use only and is not intended for conveyance nor is it a survey.

Note- Assessor's block Numbers Shown in Ellipses Assessor's Parcel Numbers Shown in Circles

TULIN WEST HIGHLANDS HM2002006
 TULIN WEST HIGHLANDS TOO HM2004032
 TULIN WEST HIGHLANDS REPLAT 2022 HM2022017

Assessor's Map
 Kenai Peninsula Borough