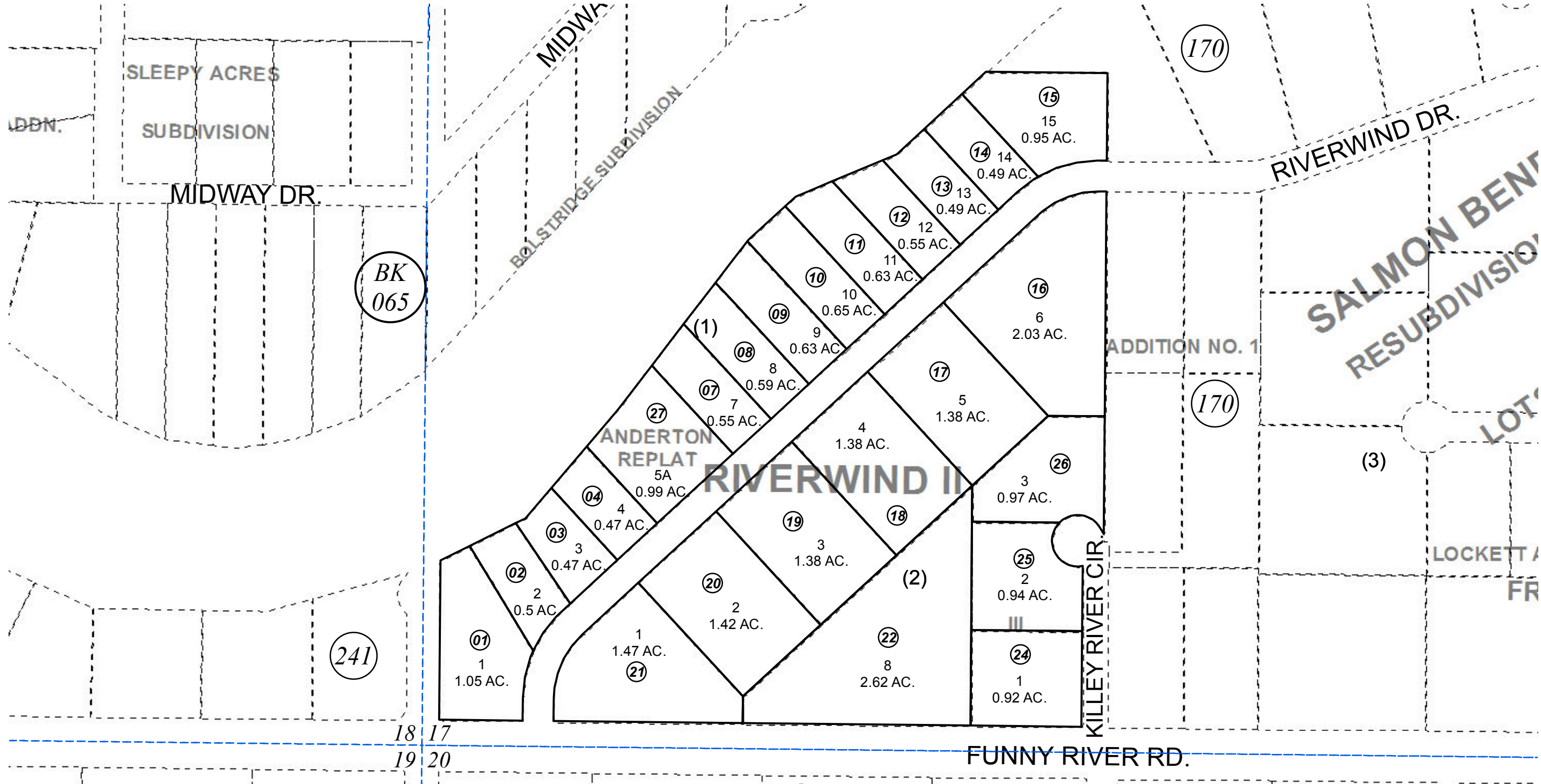


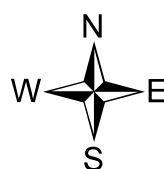
GOV'T. LOT 5 SEC. 17, T05N, R08W, S.M.

066-160



DECEMBER 7, 2015

For 2016 assessment roll		
Delete	Add	Revise
To		
05, 06	27	



0 50 100 200 Feet

Assessor's Map  
Kenai Peninsula Borough

RIVERWIND II SUB KN0720046  
RIVERWIND III SUB KN2000032  
RIVERWIND II ANDERTON REPLAT KN2015078

This map is prepared for Kenai Peninsula Borough Assessing Dept. use only and is not intended for conveyance nor is it a survey.  
Note- Assessor's block Numbers Shown in Ellipses  
Assessor's Parcel Numbers Shown in Circles