

POR. SEC. 33, T05N, R10W, S.M.

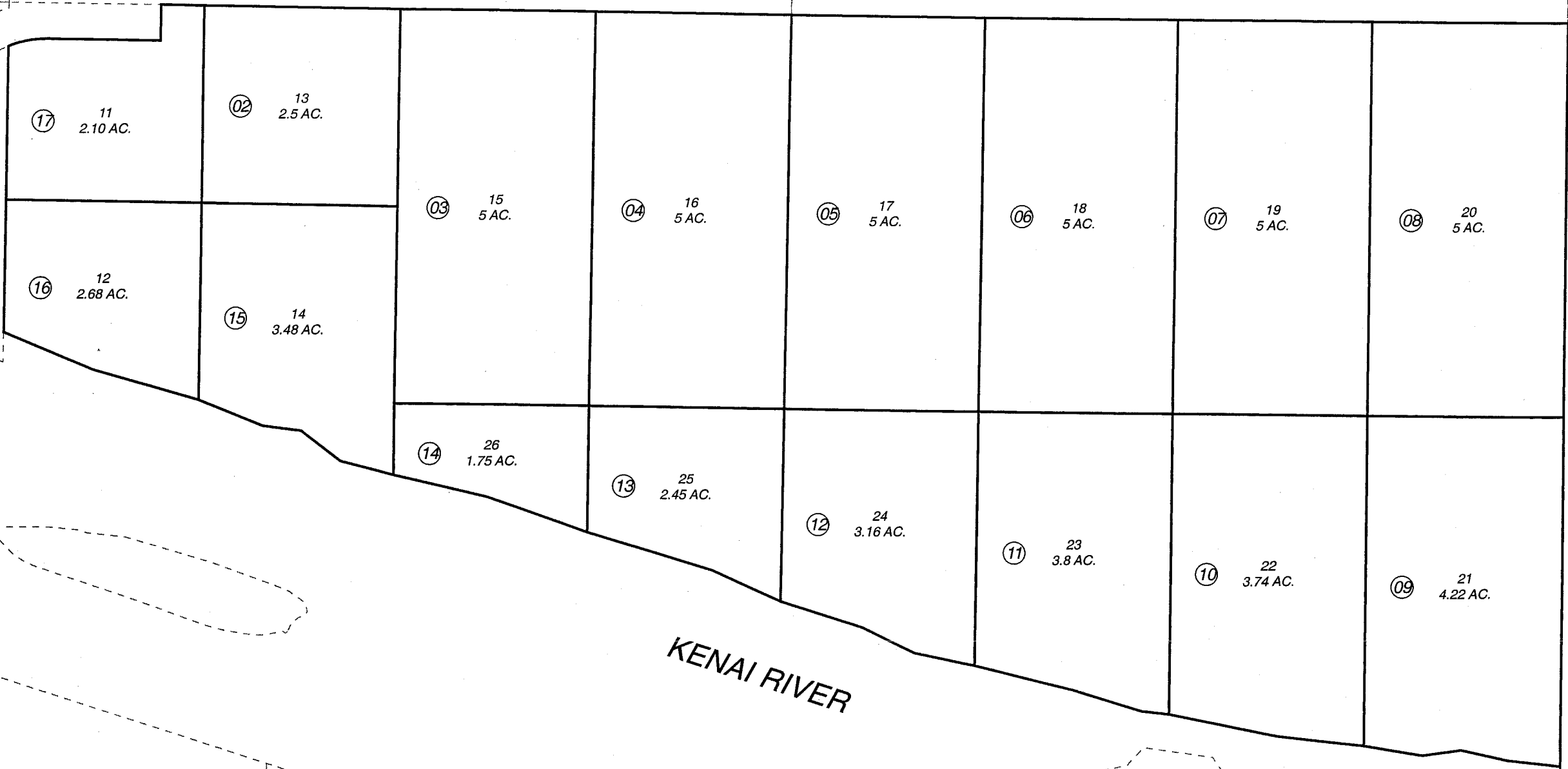
060-330

UBD.

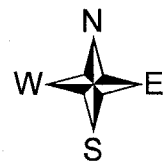
340

390

330



KENAI RIVER



DECEMBER 12, 2005

For 2006 assessment roll		
Delete	Add	Revise
To		
1	17	

Assessor's Map
Kenai Peninsula Borough

This map is prepared for Kenai Peninsula Borough Assessing Dept. use only and is not intended for conveyance nor is it a survey.

Note- Assessor's block Numbers Shown in Ellipses
Assessor's Parcel Numbers Shown in Circles