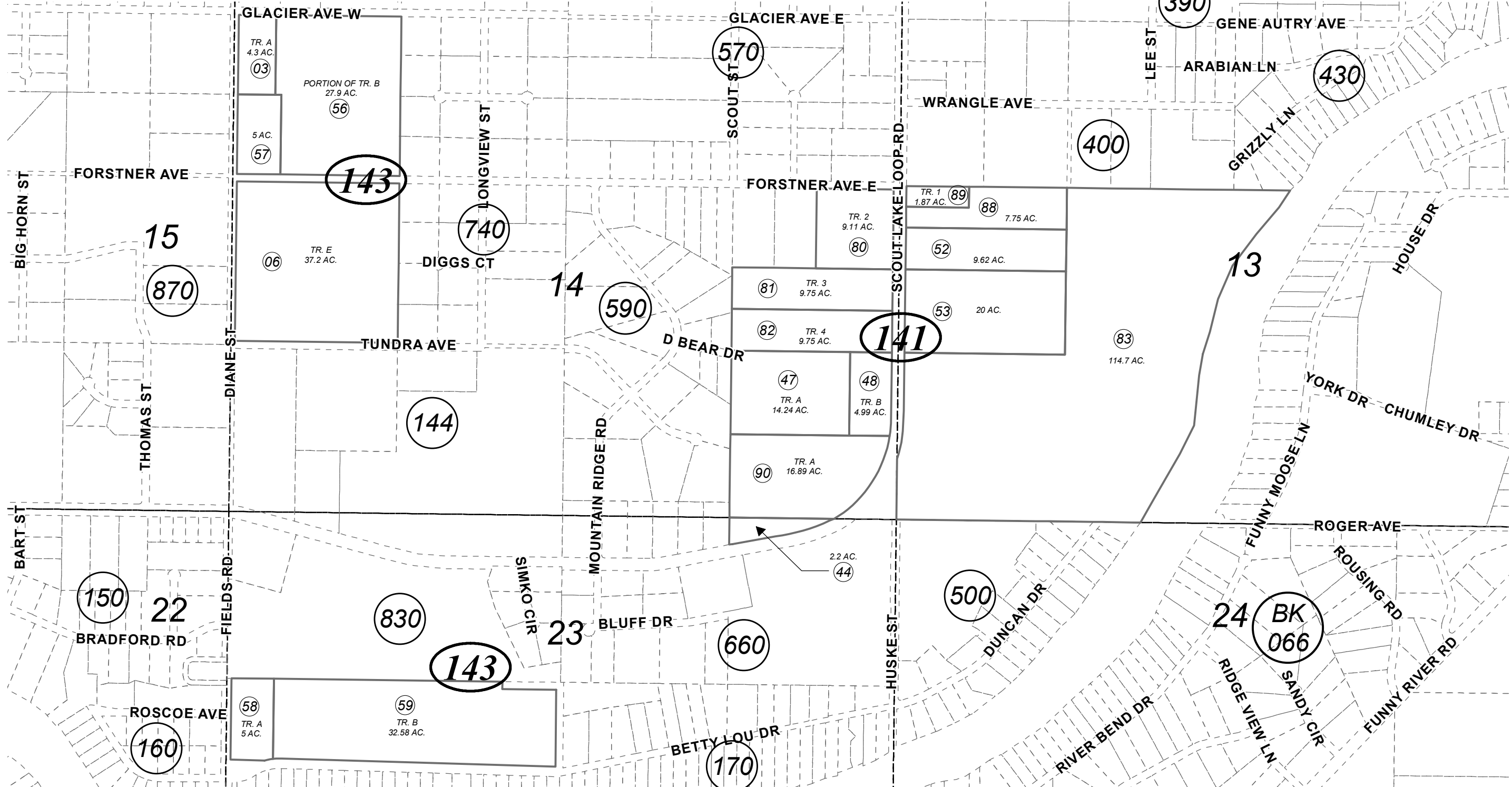


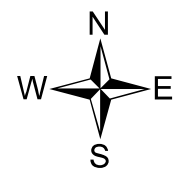
POR. SEC. 13,14 & 23, T05N, R09W, S.M.

063-140



JULY 17, 2023

For 2024 assessment roll		
Delete	Add	Revise
To		
14146	47,48	



0 300 600 Feet

Assessor's Map
Kenai Peninsula Borough

FORSTNER SUB KN0760037
 LAKE VIEW ACRES SUB KN0760139
 DORCAS SUB KN0770177
 PLAT WAIVER RESOLUTION 2004-29 KN2004-006787-0
 WILSON-FIELDS SUB KN2020010
 HUSKE-SCOUT LAKE SUB KN2020017
 YODER SUB KN2023019

This map is prepared for Kenai Peninsula Borough Assessing Dept. use only and is not intended for conveyance nor is it a survey.

Note- Assessor's block Numbers Shown in Elipses
 Assessor's Parcel Numbers Shown in Circles