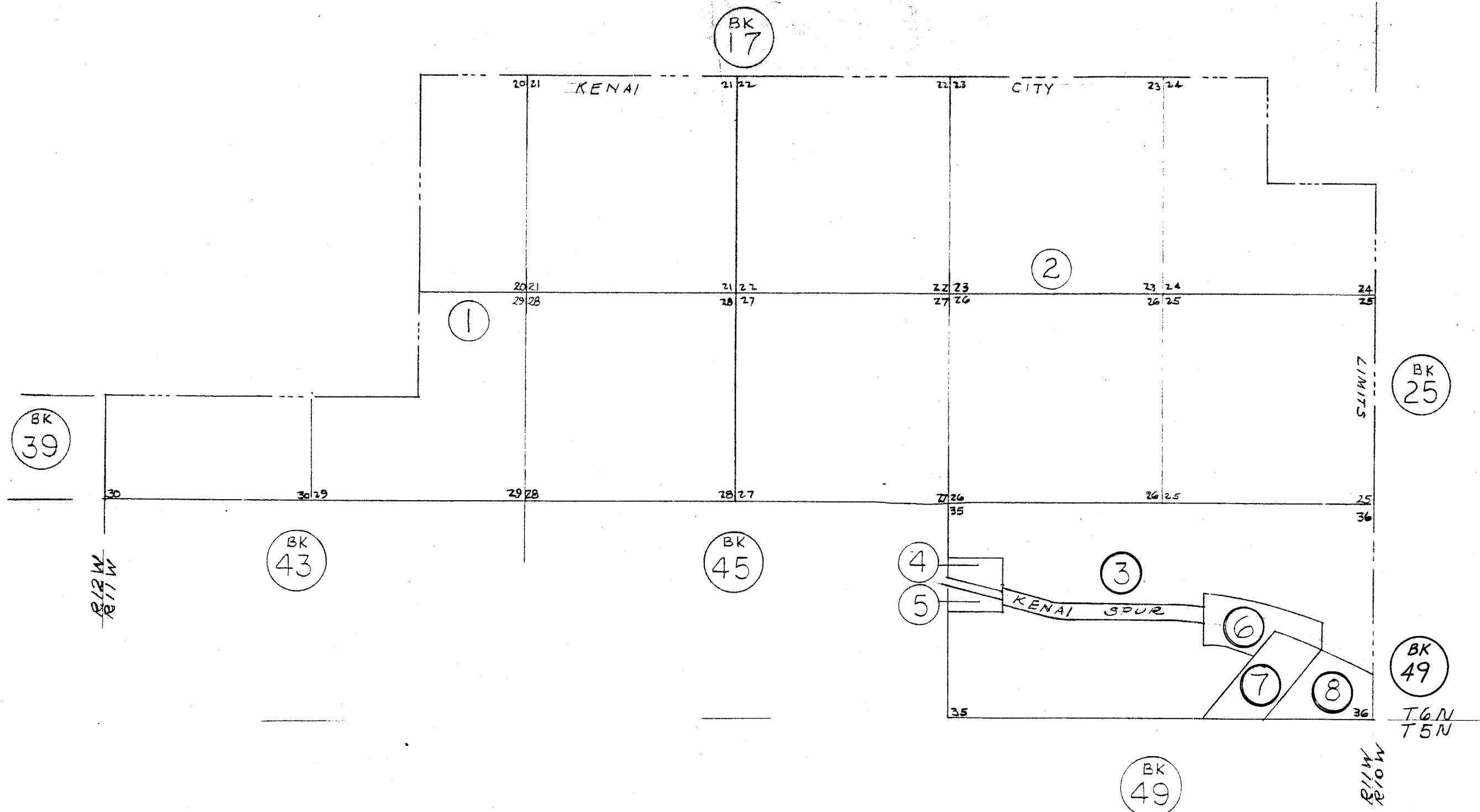


POR. SEC. 20, 21, 22, 23, 24, 25, 26, 27, 28, 29, 30, 35, 36, T6N, R11W, S.B. & M.  
CITY OF KENAI



INDEX  
Assessor's Map BOOK 41  
Kenai Peninsula Borough, Alaska

NOTE - Assessor's Block Numbers Shown in Ellipses  
Assessor's Parcel Numbers Shown in Circles